

## Product datasheet for **TA354198**

### Insulin (INS) Mouse Monoclonal Antibody

#### Product data:

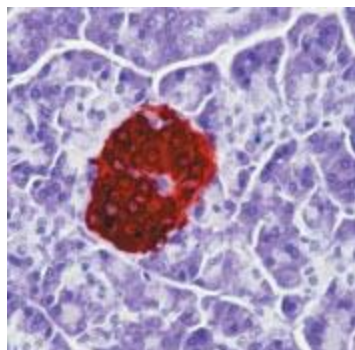
Product Type:	Primary Antibodies
Applications:	IHC
Recommended Dilution:	WB 0.1-1 µg/ml ELISA 0.01-0.1 µg/ml IP 2-5 µg/ml IHC 2-10 µg/ml FC 5-10 µg/ml
Reactivity:	Human, Rat, Pig
Host:	Mouse
Isotype:	IgG1
Clonality:	Monoclonal
Immunogen:	Recombinant full length of human Insulin Protein.
Formulation:	This affinity purified antibody is supplied in sterile Phosphate buffered saline (pH7.2) containing antibody stabilizer.
Purification:	The mouse IgG is purified by Protein A-Affinity Chromatography according to Isotyping
Conjugation:	Unconjugated
Storage:	Store at -20°C as received.
Stability:	Stable for 12 months from date of receipt.
Predicted Protein Size:	~6 kDa
Gene Name:	insulin
Database Link:	<a href="#">NP_000198</a> <a href="#">Entrez Gene 3630 Human P01308</a>
Background:	Insulin is a 51-amino acid polypeptide composed of A and B chains connected through the C-peptide. Proinsulin, which has very little biological activity, is cleaved by proteases within its cell of origin into the insulin molecule and the C-terminal basic residue. Insulin enhances membrane transport of glucose, amino acids, and certain ions. It also promotes glycogen storage, formation of triglycerides, and synthesis of proteins and nucleic acids. The main storage site for insulin is the pancreatic islets. Antibodies to insulin are important as $\beta$ -cell of islets of Langerhans and tumor (insulinoma) marker.
Synonyms:	IDDM; IDDM1; IDDM2; ILPR; IRDN; MODY10
Protein Families:	Druggable Genome, ES Cell Differentiation/IPS, Secreted Protein



[View online »](#)

**Protein Pathways:**

Insulin signaling pathway, Maturity onset diabetes of the young, mTOR signaling pathway, Oocyte meiosis, Progesterone-mediated oocyte maturation, Prostate cancer, Regulation of actin cytoskeleton, Regulation of autophagy, Type I diabetes mellitus, Type II diabetes mellitus

**Product images:**

IHC: Human pancreas tissue stained with Mouse anti-Insulin antibody at 1:100 for 30 min at RT, visualized by using peroxidaseconjugate and AEC chromogen. Note cytoplasmic staining of beta cells of the islets of Langerhans. Staining of formalin-fixed tissue requires boiling tissue sections in 10 mM Citrate Buffer, pH 6.0 for 10 min followed by cooling at RT for 20 min.