

Product datasheet for **TA354191**

Estrogen Receptor 1 (ESR1) Rabbit Polyclonal Antibody

Product data:

Product Type:	Primary Antibodies
Applications:	IHC, WB
Recommended Dilution:	WB 0.1-1 µg/ml ELISA 0.01-0.1 µg/ml IP 2-5 µg/ml IHC 2-10 µg/ml FC 5-10 µg/ml
Reactivity:	Human, Mouse, Rat
Host:	Rabbit
Isotype:	IgG
Clonality:	Polyclonal
Immunogen:	A synthetic peptide corresponding to the C-terminus of human estrogen receptor protein. This sequence is identical to human, Gorilla, Bovine, etc.
Formulation:	This affinity purified antibody is supplied in sterile Phosphate buffered saline (pH7.2) containing antibody stabilizer.
Purification:	The Rabbit IgG is purified by Epitope Affinity Purification
Conjugation:	Unconjugated
Storage:	Store at -20°C as received.
Stability:	Stable for 12 months from date of receipt.
Predicted Protein Size:	67 kDa
Gene Name:	estrogen receptor 1
Database Link:	NP_000116 Entrez Gene 13982 Mouse Entrez Gene 24890 Rat Entrez Gene 2099 Human P03372



[View online »](#)

Background:

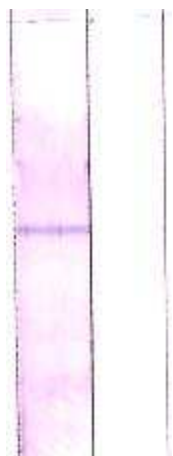
ER (estrogen receptor) belongs to a member of the steroid receptor superfamily, a ligand-activated transcription factor composed of several domains important for hormone binding, DNA binding and activation of transcription. This protein localizes to the nucleus where it may form a homodimer or a heterodimer with estrogen receptor 2. Estrogen and its receptors are essential for sexual development and reproductive function, but also play a role in other tissues such as bone. Estrogen receptors are also involved in pathological processes including breast cancer, endometrial cancer, and osteoporosis. ER regulates transcription by its phosphorylation at multiple sites, such as serine 104, 106, 118, 167 and 305. Phosphorylation of certain serine at ER may relate to breast cancer process and on-going treatment.

Synonyms:

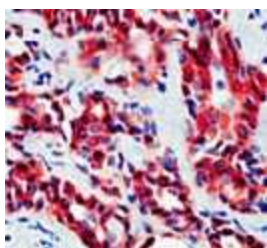
ER; Era; ESR; ESRA; ESTRR; NR3A1

Protein Families:

Druggable Genome, Nuclear Hormone Receptor, Transcription Factors

Product images:

WB: The whole cell lysates derived from MCF-7 were immunoblotted by Rabbit anti-ER antibody at 1:500 (Lane 1). The immunoreactive band is blocked by pre-incubation of immunizing peptide (lane 2)



IHC: Human breast cancer tissue stained with Anti-ER antibody, at 1:200 for 10 min at RT. Staining of formalin-fixed tissue requires boiling tissue sections in 10 mM Citrate Buffer, pH 6.0 for 10 min followed by cooling at RT for 20 min.