

Product datasheet for **TA354181**

gamma Tubulin (TUBG1) Rabbit Polyclonal Antibody

Product data:

Product Type:	Primary Antibodies
Applications:	IHC
Recommended Dilution:	WB 1-5 µg/ml ELISA Not tested IP 2-5 µg/ml IHC 1-2 µg/ml FC Not tested
Reactivity:	Human, Mouse, Rat
Host:	Rabbit
Isotype:	IgG
Clonality:	Polyclonal
Immunogen:	A synthetic peptide corresponding to aa 432-451 of human tubulin.
Formulation:	This affinity purified antibody is supplied in sterile Phosphate buffered saline (pH7.2) containing antibody stabilizer.
Purification:	The Rabbit IgG is purified by Epitope Affinity Purification
Conjugation:	Unconjugated
Storage:	Store at -20°C as received.
Stability:	Stable for 12 months from date of receipt.
Predicted Protein Size:	50 kDa
Gene Name:	tubulin gamma 1
Database Link:	NP_001061 Entrez Gene 103733 Mouse Entrez Gene 252921 Rat Entrez Gene 7283 Human P23258



[View online »](#)

Background:

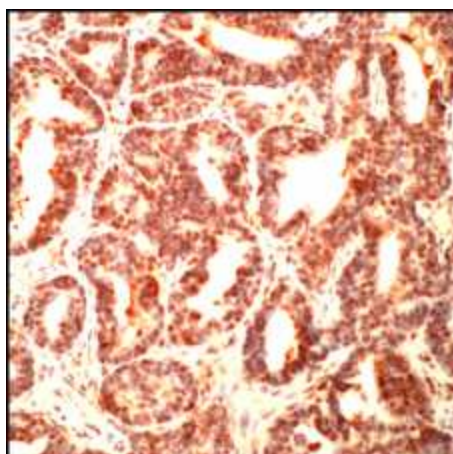
Tubulin gamma, a member of the tubulin superfamily, is a ubiquitous and highly conserved protein within the microtubule organizing centre (MTOC). It is an essential structural protein for cell growth organizes microtubule arrays in the nucleus and cytoplasm. Tubulin gamma-depleted cells fail to form functional spindles and arrest during nuclear division. The phosphorylation of Tubulin gamma at Tyr445 plays a regulatory role in microtubule formation. The incidence rate for this phosphorylation event peaks during G1. The abundance of Gamma tubulin is less than 1% of the level of either alpha or beta tubulin. It shares approximately 28-32% identity with alpha tubulin from various organisms and 32-36% identity with beta tubulins. The detection, localization and characterization of proteins involved in microtubule function is fundamental to the understanding of mitosis, meiosis and the microtubule cytoskeleton. Antibodies reacting specifically with gamma tubulin serve as an essential tool in the detection of the presence and role of this molecule in various cellular settings. Gamma tubulin 1 and Gamma tubulin 2 are different isoforms that are 97% homologous.

Synonyms:

CDCBM4; GCP-1; TUBG; TUBGCP1

Protein Families:

Druggable Genome

Product images:

IHC: Human colon carcinoma stained with Anti-Tubulin gamma antibody at 1:100 for 30 min, RT. (Staining of formalin-fixed tissues requires boiling tissue section in 10 mM Citrate Buffer, pH 6.0 for 10 min followed by cooling at RT for 20 min.)