

## Product datasheet for **TA354158**

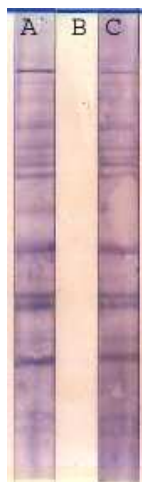
### Mouse Monoclonal Antibody

#### Product data:

|                       |  |
|-----------------------|--|
| Product Type:         | Primary Antibodies   |
| Applications:         | WB   |
| Recommended Dilution: | WB 0.1-1 µg/ml ELISA 0.01-0.1 µg/ml IP 2-5 µg/ml IHC Not tested FC Not tested  |
| Reactivity:           | Human, Mouse, Rat  |
| Host:                 | Mouse  |
| Isotype:              | IgG1   |
| Clonality:            | Monoclonal   |
| Immunogen:            | A chemically linked phosphoserine  |
| Formulation:          | This affinity purified antibody is supplied in sterile Tris-buffered saline (pH7.2) containing antibody stabilizer.  |
| Purification:         | The Mouse IgG is purified by affinity chromatography   |
| Conjugation:          | Unconjugated   |
| Storage:              | Store at -20°C as received.  |
| Stability:            | Stable for 12 months from date of receipt.   |
| Background:           | Protein phosphorylation is involved in cell signaling pathways. These cascades are mediated by two types of kinases: serine/threonine kinases which phosphorylate serine and threonine amino acid side chains and tyrosine kinases which phosphorylate tyrosine amino acid side chains. This process is regulated by kinases and phosphatases. |



[View online »](#)

**Product images:**

WB: The cell lysate derived from EGFstimulated A431 was resolved onto 12% SDS-PAGE and immunoblotted by Mouse anti-pSER antibody at 1:500 (lane A); or pre-incubated by Phosphoserine (lane B) or pre-incubated by phosphotyrosine (lane C). A panel of phosphorylated proteins was observed.