

## Product datasheet for **TA354110**

### **Tcl1 (TCL1A) Rabbit Monoclonal Antibody [Clone ID: SP248]**

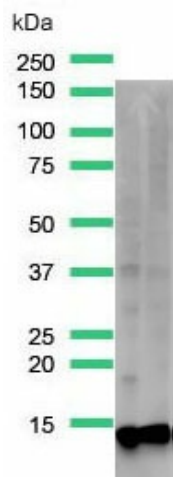
#### **Product data:**

Product Type:	Primary Antibodies
Clone Name:	SP248
Applications:	FC, IHC, WB
Recommended Dilution:	IHC-P, WB, FACS
Reactivity:	Human
Host:	Rabbit
Isotype:	IgG
Clonality:	Monoclonal
Immunogen:	Synthetic peptide derived from the internal region of the human TCL1 protein.
Formulation:	PBS/1% BSA buffer pH 7.6 with less than 0.1% sodium azide.
Purification:	protein A/G
Conjugation:	Unconjugated
Storage:	Store at -20°C as received.
Stability:	Stable for 12 months from date of receipt.
Predicted Protein Size:	14 kDa
Gene Name:	T-cell leukemia/lymphoma 1A
Database Link:	<a href="#">NP_068801</a> <a href="#">Entrez Gene 8115 Human P56279</a>
Background:	T-cell leukemia/lymphoma protein 1A (TCL1) is a member of the TCL1 family and is mainly expressed in the T-cells, immature thymocytes, activated peripheral lymphocytes, and subset of Bcells. TCL1 enhances the phosphorylation and activation of AKT1, AKT2 and AKT3 and promote cell proliferation. Rearrangements at the TCL1 locus are associated with T-cell leukemia/ lymphoma.
Synonyms:	TCL1
Protein Families:	Druggable Genome

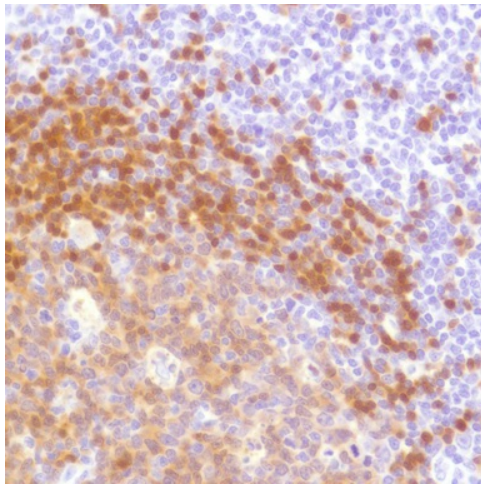


[View online »](#)

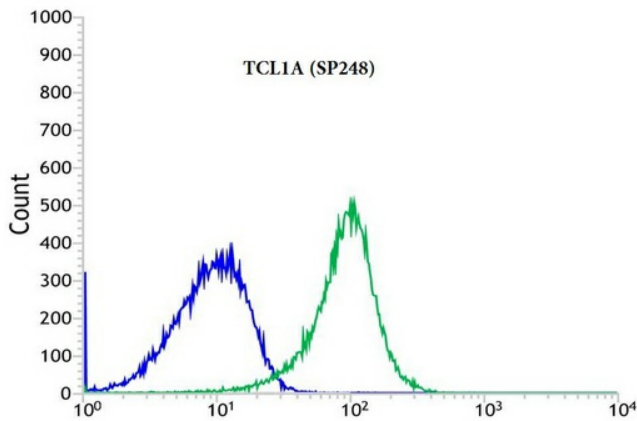
Product images:



Western Blot analysis of RAMOS cell lysate with TCL1A antibody



Human tonsil stained with anti-TCL1A antibody.



Flow cytometric analysis of rabbit anti-TCL1A (SP248) antibody in RAMOS cells (green) compare to negative control of rabbit IgG (blue).

