

Product datasheet for **TA354029**

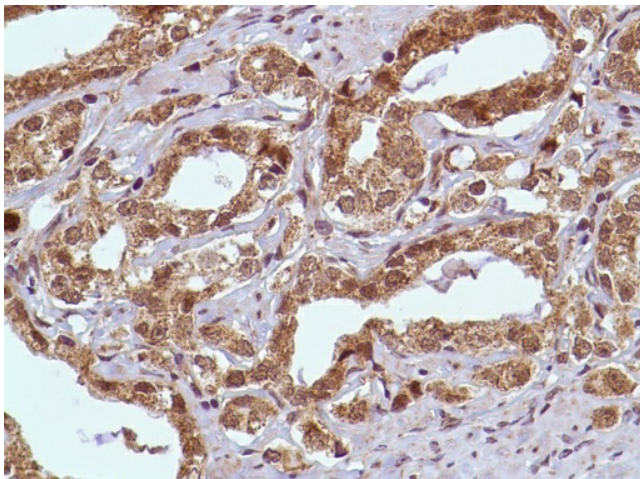
PIM1 Rabbit Polyclonal Antibody

Product data:

Product Type:	Primary Antibodies
Applications:	IHC
Recommended Dilution:	IHC-P
Reactivity:	Human
Host:	Rabbit
Isotype:	IgG
Clonality:	Polyclonal
Immunogen:	Synthetic peptide derived from internal region of human PIM1 protein.
Formulation:	PBS/1% BSA buffer pH 7.6 with less than 0.1% sodium azide.
Purification:	Immunogen affinity purified
Conjugation:	Unconjugated
Storage:	Store at -20°C as received.
Stability:	Stable for 12 months from date of receipt.
Predicted Protein Size:	45 kDa(isoform 1) and 36 kDa (isoform 2)
Gene Name:	Pim-1 proto-oncogene, serine/threonine kinase
Database Link:	NP_002639 Entrez Gene 5292 Human P11309
Background:	PIM-1 is a member of the serine/threonine kinase PIM oncogene family. PIM-1 has been implicated in lymphomagenesis, cell proliferation, apoptosis, differentiation and tumourigenesis. The PIM-1 protein kinase is upregulated in prostate cancer.
Synonyms:	PIM
Protein Families:	Druggable Genome, ES Cell Differentiation/IPS, Protein Kinase
Protein Pathways:	Acute myeloid leukemia, Jak-STAT signaling pathway



[View online »](#)

Product images:

Human prostate adenocarcinoma stained with anti-PIM-1 antibody.