

## Product datasheet for **TA353869**

### **HBA1 Rabbit Monoclonal Antibody [Clone ID: SP212]**

#### **Product data:**

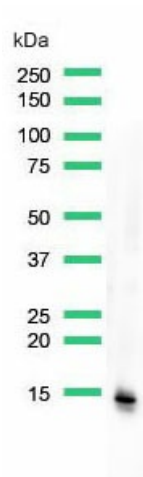
Product Type:	Primary Antibodies
Clone Name:	SP212
Applications:	FC, IHC, WB
Recommended Dilution:	IHC-P, WB, FACS
Reactivity:	Human
Host:	Rabbit
Isotype:	IgG
Clonality:	Monoclonal
Immunogen:	Synthetic peptide derived from human hemoglobin alpha chain protein.
Formulation:	PBS/1% BSA buffer pH 7.6 with less than 0.1% sodium azide.
Purification:	protein A/G
Conjugation:	Unconjugated
Storage:	Store at -20°C as received.
Stability:	Stable for 12 months from date of receipt.
Predicted Protein Size:	14 kDa
Gene Name:	hemoglobin subunit alpha 1
Database Link:	<a href="#">NP_000549</a> <a href="#">Entrez Gene 3039 Human P69905</a>

**Background:** Hemoglobin A, A2, and F are the three major forms of hemoglobin in human. Hemoglobin is a heterotetramer of two alpha chains and two beta chains in adult hemoglobin A (HbA); two alpha chains and two delta chains in adult hemoglobin A2 (HbA2); two alpha chains and two gamma chains in fetal hemoglobin F (HbF). Antibody against hemoglobin alpha chain can recognize all three forms of hemoglobins (A, A2, and F). Hemoglobin can be used as an erythroid marker for the detection of immature, dysplastic, and megaloblastic erythroid cells in various hemopoietic disorders and hemoglobinopathies.

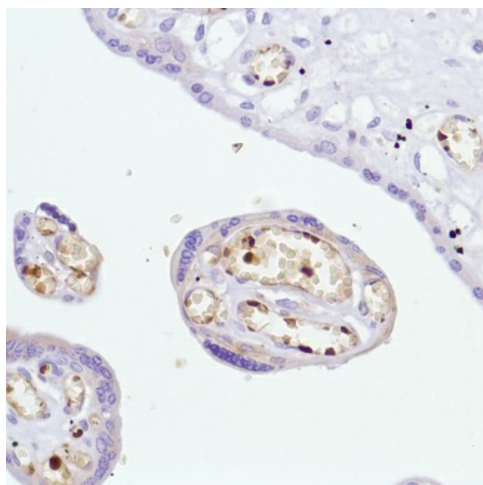
**Synonyms:** HBA-T3; HBH



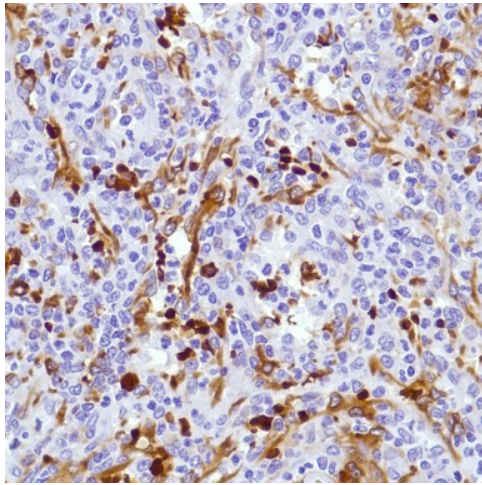
[View online »](#)

**Product images:**

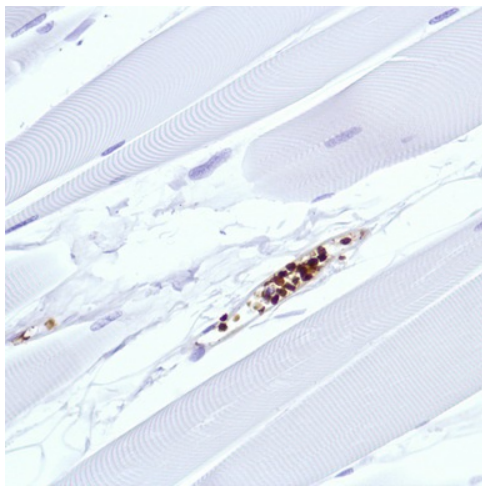
Western Blot analysis of heart lysate with anti-hemoglobin alpha chain antibody.



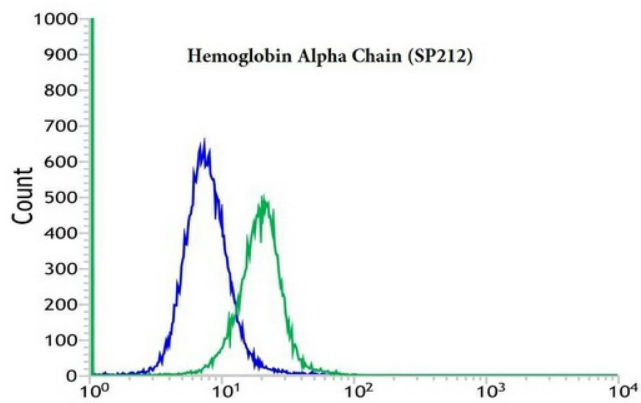
Human placenta stained with anti-hemoglobin alpha chain antibody.



Flow cytometric analysis of rabbit anti-Hemoglobin Alpha Chain (SP212) antibody in K562 (green) compare to negative control of rabbit IgG (blue).



Human Spleen stained with anti-Hemoglobin Alpha antibody.



Human Skeletal Muscle stained with anti-Hemoglobin Alpha antibody.