

Product datasheet for **TA353839**

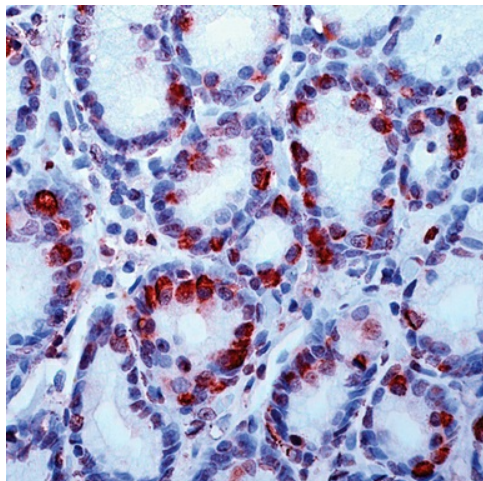
Gastrin (GAST) Rabbit Polyclonal Antibody

Product data:

Product Type:	Primary Antibodies
Applications:	IHC
Recommended Dilution:	IHC-P
Reactivity:	Human
Host:	Rabbit
Isotype:	IgG
Clonality:	Polyclonal
Immunogen:	Synthetic peptide derived from N-terminus of gastrin 1.
Formulation:	PBS/1% BSA buffer pH 7.6 with less than 0.1% sodium azide.
Purification:	Immunogen affinity purified
Conjugation:	Unconjugated
Storage:	Store at -20°C as received.
Stability:	Stable for 12 months from date of receipt.
Predicted Protein Size:	11 kDa
Gene Name:	gastrin
Database Link:	NP_000796 Entrez Gene 2520 Human P01350
Background:	Gastrin is a 17 amino acid peptide hormone and neurotransmitter widely distributed throughout the gastrointestinal (GI) tract and the central nervous system (CNS). Antibodies that react specifically with gastrin may be used to study the differential tissue expression and intracellular and subcellular localization of gastrin in neuroendocrine cells of the gastrointestinal tract, and in the CNS.
Synonyms:	GAS
Protein Families:	Druggable Genome, Secreted Protein



[View online »](#)

Product images:

Human Stomach stained with anti-Gastrin-1 antibody.