

## Product datasheet for **TA352016**

### CTBP1 Rabbit Polyclonal Antibody

#### Product data:

Product Type:	Primary Antibodies
Applications:	IHC, WB
Recommended Dilution:	WB: 500-2000 WB positive control: 293T and NIH/3T3 cell IHC: 50-250 Positive control: Human breast cancer Predicted cell location: Nucleus
Reactivity:	Human, Mouse, Rat
Host:	Rabbit
Isotype:	IgG
Clonality:	Polyclonal
Immunogen:	Synthetic peptide of human CTBP1
Formulation:	pH7.4 PBS, 0.05% NaN <sub>3</sub> , 40% Glycerol
Concentration:	lot specific
Purification:	Antigen affinity purification
Conjugation:	Unconjugated
Storage:	Store at -20°C as received.
Stability:	Stable for 12 months from date of receipt.
Gene Name:	C-terminal binding protein 1
Database Link:	<a href="#">NP_001319</a> <a href="#">Entrez Gene 13016 Mouse</a> <a href="#">Entrez Gene 29382 Rat</a> <a href="#">Entrez Gene 1487 Human</a> <a href="#">Q13363</a>

**Background:** This gene encodes a protein that binds to the C-terminus of adenovirus E1A proteins. This phosphoprotein is a transcriptional repressor and may play a role during cellular proliferation. This protein and the product of a second closely related gene, CTBP2, can dimerize. Both proteins can also interact with a polycomb group protein complex which participates in regulation of gene expression during development. Alternative splicing of transcripts from this gene results in multiple transcript variants.

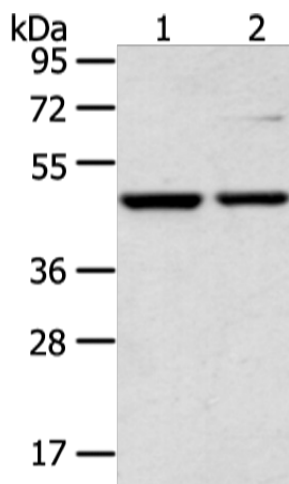


[View online »](#)

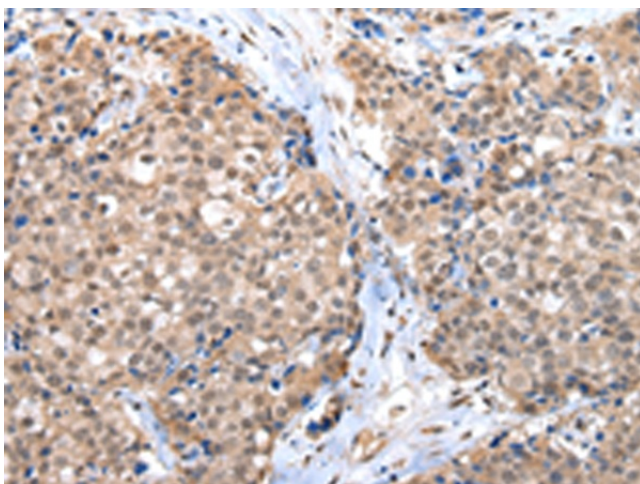
Synonyms: BARS

Protein Pathways: Chronic myeloid leukemia, Notch signaling pathway, Pathways in cancer, Wnt signaling pathway

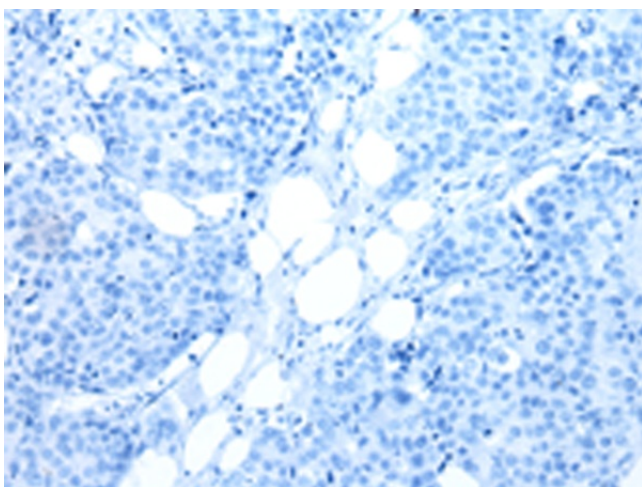
### Product images:



Gel: 8%SDS-PAGE  
Lysate: 40  $\mu$ g  
Lane 1-2: 293T and NIH/3T3 cell  
Primary antibody: TA352016 (CTBP1 Antibody) at dilution 1/650  
Secondary antibody: Goat anti rabbit IgG at 1/8000 dilution  
Exposure time: 5 seconds



Immunohistochemistry of paraffin-embedded Human breast cancer tissue using TA352016 (CTBP1 Antibody) at dilution 1/65 (Original magnification:  $\times$ 200)



Immunohistochemistry of paraffin-embedded Human breast cancer tissue using TA352016 (CTBP1 Antibody) at dilution 1/65, treated with synthetic peptide. (Original magnification: ×200)