

## Product datasheet for **TA352011**

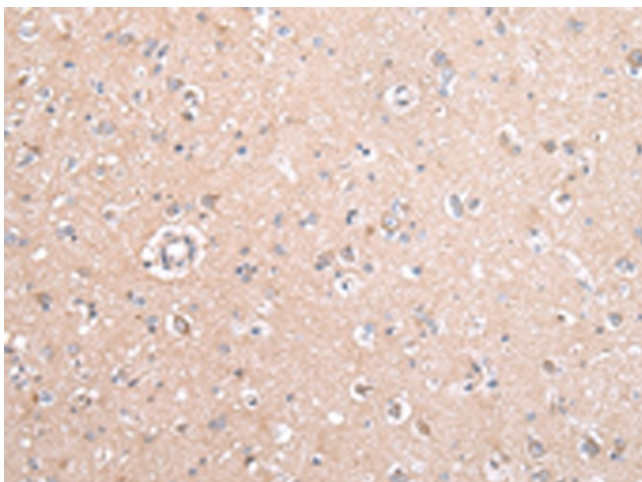
### GJB5 Rabbit Polyclonal Antibody

#### Product data:

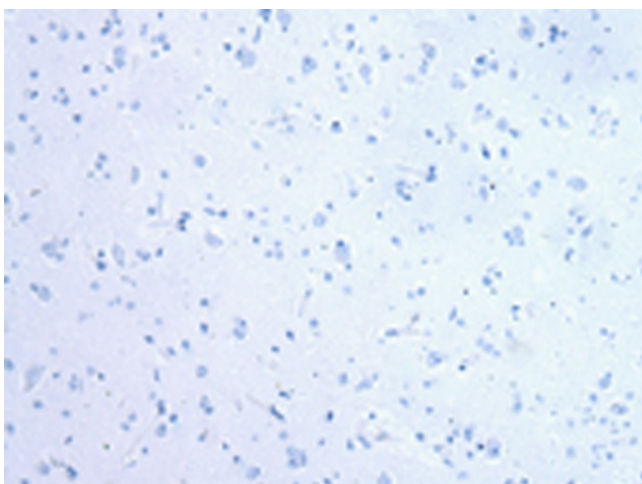
Product Type:	Primary Antibodies
Applications:	IHC
Recommended Dilution:	IHC: 30-150 Positive control: Human brain Predicted cell location: Cytoplasm
Reactivity:	Human, Mouse, Rat
Host:	Rabbit
Isotype:	IgG
Clonality:	Polyclonal
Immunogen:	Synthetic peptide of human GJB5
Formulation:	pH7.4 PBS, 0.05% NaN <sub>3</sub> , 40% Glycerol
Concentration:	lot specific
Purification:	Antigen affinity purification
Conjugation:	Unconjugated
Storage:	Store at -20°C as received.
Stability:	Stable for 12 months from date of receipt.
Gene Name:	gap junction protein beta 5
Database Link:	<a href="#">NP_005259</a> <a href="#">Entrez Gene 2709 Human</a> <a href="#">O95377</a>
Background:	This gene encodes a member of the beta-type (group I) connexin family. The encoded protein is a gap junction protein involved in intercellular communication related to epidermal differentiation and environmental sensing. This gene has been linked to non-small cell lung cancer.
Synonyms:	CX31.1
Protein Families:	Ion Channels: Other, Transmembrane



[View online »](#)

**Product images:**

Immunohistochemistry of paraffin-embedded Human brain tissue using TA352011 (GJB5 Antibody) at dilution 1/45 (Original magnification: ×200)



Immunohistochemistry of paraffin-embedded Human brain tissue using TA352011 (GJB5 Antibody) at dilution 1/45, treated with synthetic peptide. (Original magnification: ×200)