

## Product datasheet for **TA352010S**

### CDX2 Rabbit Polyclonal Antibody

#### Product data:

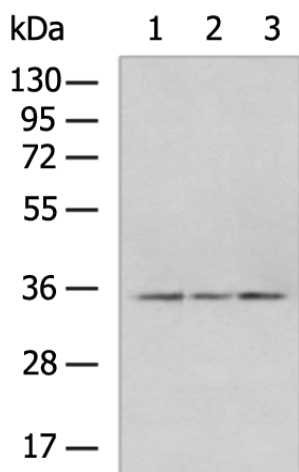
Product Type:	Primary Antibodies
Applications:	IHC, WB
Recommended Dilution:	WB: 200-1000 WB positive control: MCF-7, HeLa, LOVO cell lysates IHC: 50-200 Positive control: Human gastric cancer Predicted cell location: Nucleus
Reactivity:	Human, Mouse
Host:	Rabbit
Isotype:	IgG
Clonality:	Polyclonal
Immunogen:	Synthetic peptide of human CDX2
Formulation:	pH7.4 PBS, 0.05% NaN <sub>3</sub> , 40% Glycerol
Purification:	Antigen affinity purification
Conjugation:	Unconjugated
Storage:	Store at -20°C as received.
Stability:	Stable for 12 months from date of receipt.
Gene Name:	caudal type homeobox 2
Database Link:	<a href="#">NP_001256</a> <a href="#">Entrez Gene 12591 Mouse</a> <a href="#">Entrez Gene 1045 Human</a> <a href="#">Q99626</a>
Background:	This gene is a member of the caudal-related homeobox transcription factor gene family. The encoded protein is a major regulator of intestine-specific genes involved in cell growth and differentiation. This protein also plays a role in early embryonic development of the intestinal tract. Aberrant expression of this gene is associated with intestinal inflammation and tumorigenesis.
Synonyms:	AS; CDX-3; CDX2; CDX3



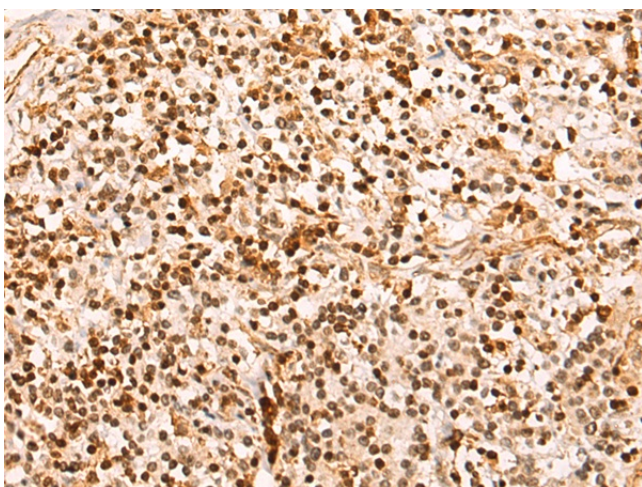
[View online »](#)

**Protein Families:** Adult stem cells, Druggable Genome, Embryonic stem cells, ES Cell Differentiation/IPS, Transcription Factors

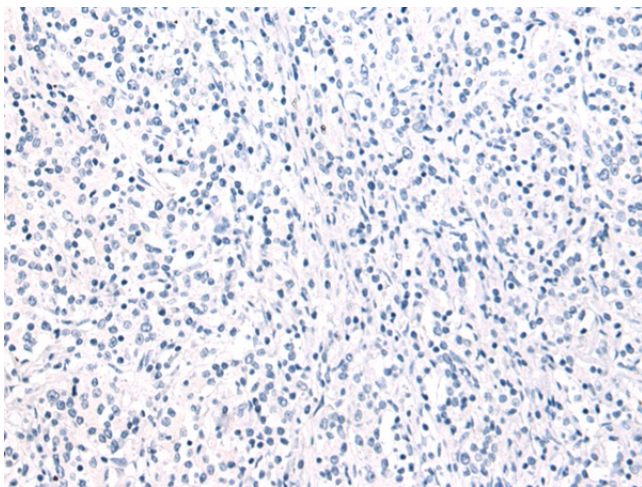
**Product images:**



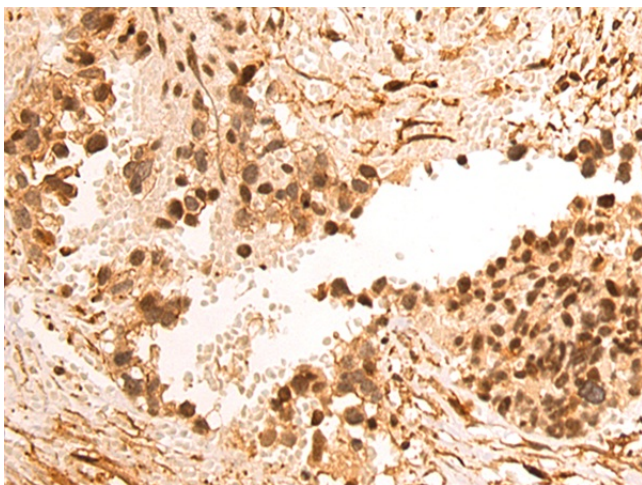
Gel: 8%SDS-PAGE  
 Lysate: 40 µg  
 Lane 1-3: MCF-7  
 HeLa  
 LOVO cell lysates  
 Primary antibody: [TA352010] (CDX2 Antibody) at dilution 1/300  
 Secondary antibody: Goat anti rabbit IgG at 1/5000 dilution  
 Exposure time: 5 minutes



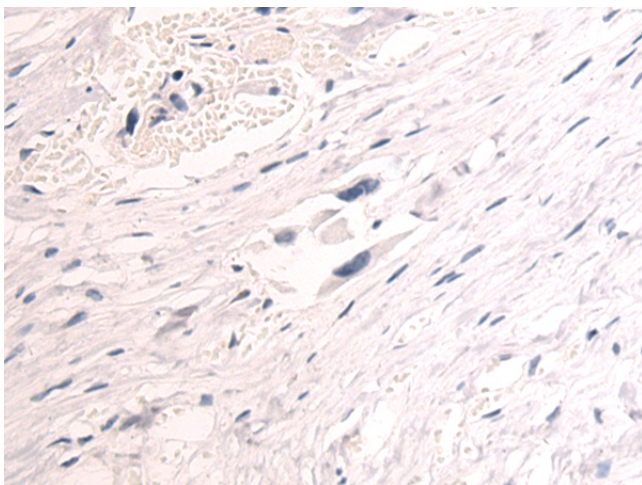
Immunohistochemistry of paraffin-embedded Human gastric cancer tissue using [TA352010] (CDX2 Antibody) at dilution 1/50 (Original magnification: ×200)



Immunohistochemistry of paraffin-embedded Human gastric cancer tissue using [TA352010] (CDX2 Antibody) at dilution 1/50, treated with synthetic peptide. (Original magnification: x200)



Immunohistochemistry of paraffin-embedded Human colorectal cancer tissue using [TA352010] (CDX2 Antibody) at dilution 1/50 (Original magnification: x200)



Immunohistochemistry of paraffin-embedded Human colorectal cancer tissue using [TA352010] (CDX2 Antibody) at dilution 1/50, treated with synthetic peptide. (Original magnification: x200)