

## Product datasheet for **TA352008**

### CLDND2 Rabbit Polyclonal Antibody

#### Product data:

Product Type:	Primary Antibodies
Applications:	IHC, WB
Recommended Dilution:	WB: 500-2000 WB positive control: Hela, 293T, PC3 and TM4 cell IHC: 30-150 Positive control: Human breast cancer Predicted cell location: Cytoplasm and Cell membrane
Reactivity:	Human, Mouse
Host:	Rabbit
Isotype:	IgG
Clonality:	Polyclonal
Immunogen:	Synthetic peptide of human CLDND2
Formulation:	pH7.4 PBS, 0.05% NaN <sub>3</sub> , 40% Glycerol
Concentration:	lot specific
Purification:	Antigen affinity purification
Conjugation:	Unconjugated
Storage:	Store at -20°C as received.
Stability:	Stable for 12 months from date of receipt.
Gene Name:	claudin domain containing 2
Database Link:	<a href="#">NP_689566</a> <a href="#">Entrez Gene 125875 Human</a> <a href="#">Q8NHS1</a>



[View online »](#)

**Background:**

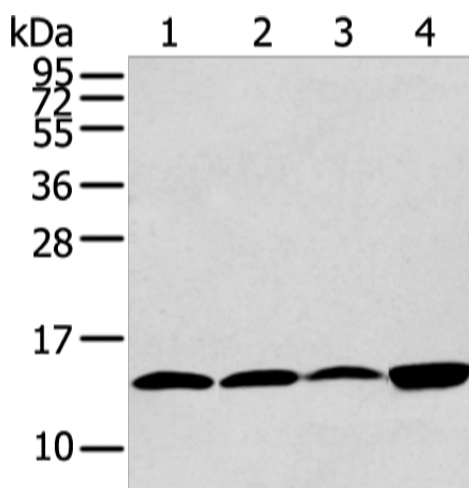
CLDND2 (claudin domain containing 2) is a 167 amino acid multi-pass membrane protein that belongs to the PMP-22/EMP/MP20 family and is encoded by a gene that maps to human chromosome 19q13.33. Consisting of around 63 million bases with over 1,400 genes, chromosome 19 makes up over 2% of human genomic DNA. Chromosome 19 includes a diversity of interesting genes and is recognized for having the greatest gene density of the human chromosomes. It is the genetic home for a number of immunoglobulin superfamily members including the killer cell and leukocyte Ig-like receptors, a number of ICAMs, the CEACAM and PSG family, and Fc receptors. Key genes for eye color and hair color also map to chromosome 19. Peutz-Jeghers syndrome, spinocerebellar ataxia type 6, the stroke disorder CADASIL, hypercholesterolemia and insulin-dependent diabetes have been linked to chromosome 19.

**Synonyms:**

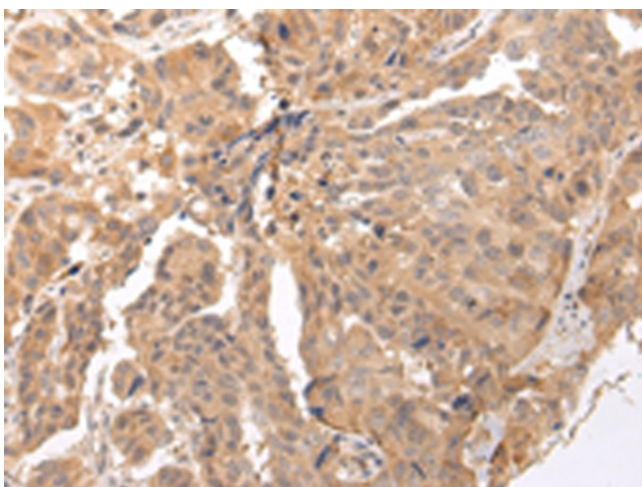
MGC33839

**Protein Families:**

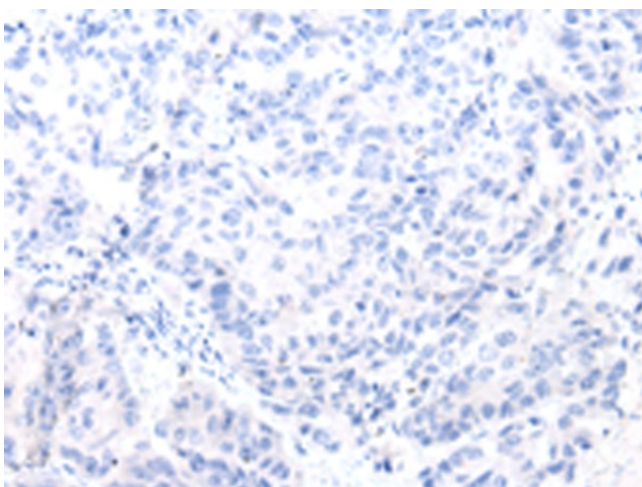
Transmembrane

**Product images:**

Gel: 12%SDS-PAGE  
Lysate: 40 µg  
Lane 1-4: HeLa  
293T  
PC3 and TM4 cell  
Primary antibody: TA352008 (CLDND2 Antibody)  
at dilution 1/400  
Secondary antibody: Goat anti rabbit IgG at  
1/8000 dilution  
Exposure time: 30 seconds



Immunohistochemistry of paraffin-embedded Human breast cancer tissue using TA352008 (CLDND2 Antibody) at dilution 1/45 (Original magnification:  $\times 200$ )



Immunohistochemistry of paraffin-embedded Human breast cancer tissue using TA352008 (CLDND2 Antibody) at dilution 1/45, treated with synthetic peptide. (Original magnification:  $\times 200$ )