

## Product datasheet for **TA352001**

### Cathepsin K (CTSK) Rabbit Polyclonal Antibody

#### Product data:

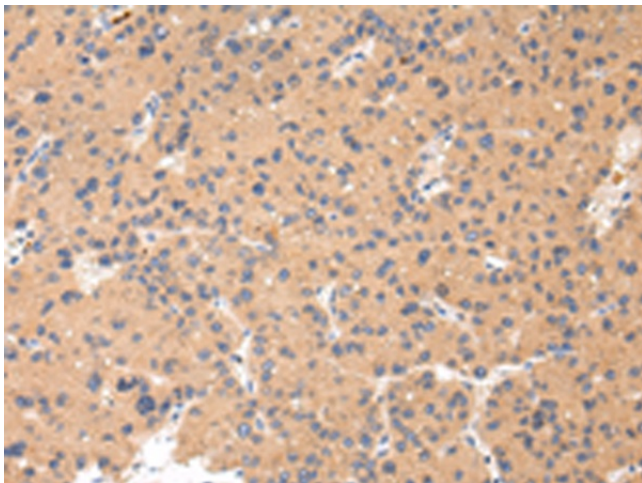
Product Type:	Primary Antibodies
Applications:	IHC
Recommended Dilution:	IHC: 25-100 Positive control: Human liver cancer Predicted cell location: Cytoplasm
Reactivity:	Human, Mouse, Rat
Host:	Rabbit
Isotype:	IgG
Clonality:	Polyclonal
Immunogen:	Synthetic peptide of human CTSK
Formulation:	pH7.4 PBS, 0.05% NaN <sub>3</sub> , 40% Glycerol
Concentration:	lot specific
Purification:	Antigen affinity purification
Conjugation:	Unconjugated
Storage:	Store at -20°C as received.
Stability:	Stable for 12 months from date of receipt.
Gene Name:	cathepsin K
Database Link:	<a href="#">NP_000387</a> <a href="#">Entrez Gene 13038 Mouse</a> <a href="#">Entrez Gene 29175 Rat</a> <a href="#">Entrez Gene 1513 Human</a> <a href="#">P43235</a>
Background:	The protein encoded by this gene is a lysosomal cysteine proteinase involved in bone remodeling and resorption. This protein, which is a member of the peptidase C1 protein family, is predominantly expressed in osteoclasts. However, the encoded protein is also expressed in a significant fraction of human breast cancers, where it could contribute to tumor invasiveness. Mutations in this gene are the cause of pycnodysostosis, an autosomal recessive disease characterized by osteosclerosis and short stature.
Synonyms:	CTS02; CTSO; CTSO1; CTSO2; PKND; PYCD
Protein Families:	Druggable Genome, Protease



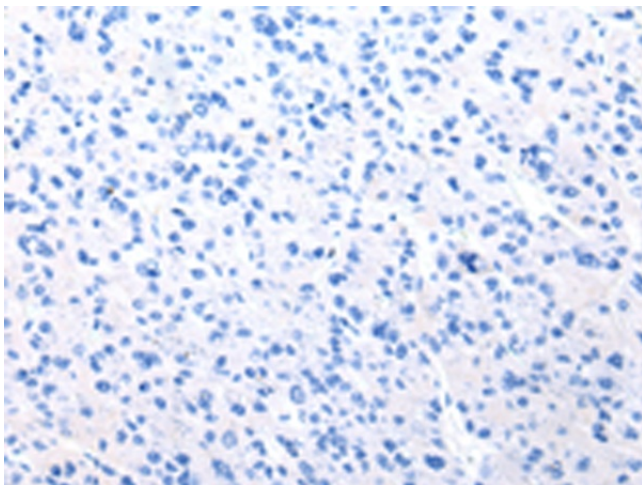
[View online »](#)

Protein Pathways: Lysosome

### Product images:



Immunohistochemistry of paraffin-embedded Human liver cancer tissue using TA352001 (CTSK Antibody) at dilution 1/20 (Original magnification: ×200)



Immunohistochemistry of paraffin-embedded Human liver cancer tissue using TA352001 (CTSK Antibody) at dilution 1/20, treated with synthetic peptide. (Original magnification: ×200)