

## Product datasheet for **TA351997S**

### Axin 1 (AXIN1) Rabbit Polyclonal Antibody

#### Product data:

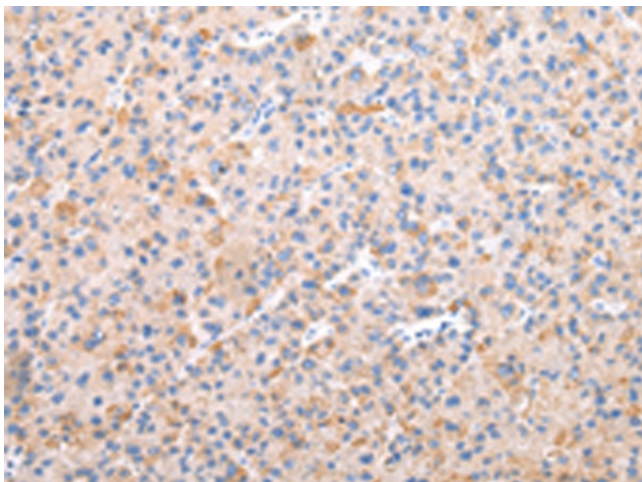
Product Type:	Primary Antibodies
Applications:	IHC
Recommended Dilution:	IHC: 25-100 Positive control: Human liver cancer Predicted cell location: Cytoplasm
Reactivity:	Human, Mouse, Rat
Host:	Rabbit
Isotype:	IgG
Clonality:	Polyclonal
Immunogen:	Synthetic peptide of human AXIN1
Formulation:	pH7.4 PBS, 0.05% NaN <sub>3</sub> , 40% Glycerol
Purification:	Antigen affinity purification
Conjugation:	Unconjugated
Storage:	Store at -20°C as received.
Stability:	Stable for 12 months from date of receipt.
Gene Name:	axin 1
Database Link:	<a href="#">NP_851393</a> <a href="#">Entrez Gene 12005 Mouse</a> <a href="#">Entrez Gene 79257 Rat</a> <a href="#">Entrez Gene 8312 Human</a> <a href="#">O15169</a>

**Background:** This gene encodes a cytoplasmic protein which contains a regulation of G-protein signaling (RGS) domain and a dishevelled and axin (DIX) domain. The encoded protein interacts with adenomatous polyposis coli, catenin beta-1, glycogen synthase kinase 3 beta, protein phosphate 2, and itself. This protein functions as a negative regulator of the wingless-type MMTV integration site family, member 1 (WNT) signaling pathway and can induce apoptosis. The crystal structure of a portion of this protein, alone and in a complex with other proteins, has been resolved. Mutations in this gene have been associated with hepatocellular carcinoma, hepatoblastomas, ovarian endometrioid adenocarcinomas, and medullablastomas. Two transcript variants encoding distinct isoforms have been identified for this gene.

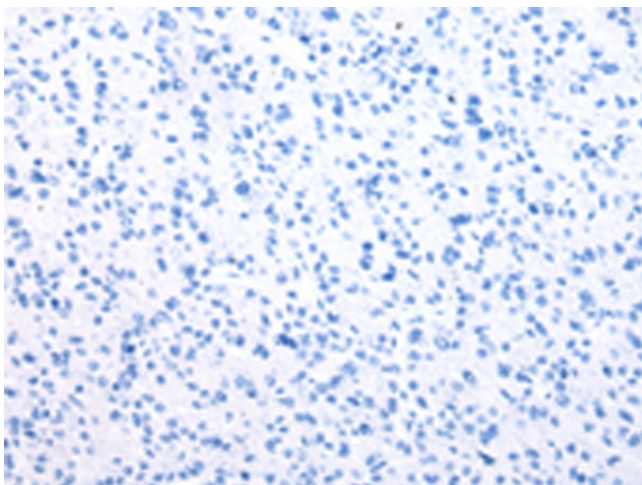


[View online »](#)

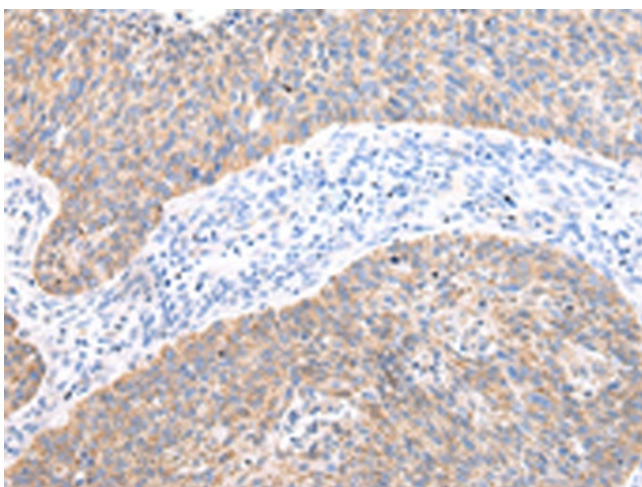
<b>Synonyms:</b>	AXIN; PPP1R49
<b>Protein Families:</b>	Druggable Genome, ES Cell Differentiation/IPS, Stem cell relevant signaling - Wnt Signaling pathway
<b>Protein Pathways:</b>	Basal cell carcinoma, Colorectal cancer, Endometrial cancer, Pathways in cancer, Wnt signaling pathway

**Product images:**

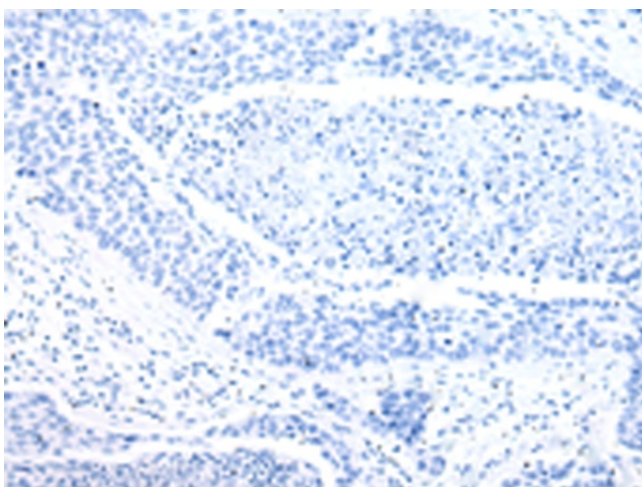
Immunohistochemistry of paraffin-embedded Human liver cancer tissue using [TA351997] (AXIN1 Antibody) at dilution 1/30 (Original magnification:  $\times 200$ )



Immunohistochemistry of paraffin-embedded Human liver cancer tissue using [TA351997] (AXIN1 Antibody) at dilution 1/30, treated with synthetic peptide. (Original magnification:  $\times 200$ )



Immunohistochemistry of paraffin-embedded Human lung cancer tissue using [TA351997] (AXIN1 Antibody) at dilution 1/30 (Original magnification:  $\times 200$ )



Immunohistochemistry of paraffin-embedded Human lung cancer tissue using [TA351997] (AXIN1 Antibody) at dilution 1/30, treated with synthetic peptide. (Original magnification:  $\times 200$ )