

Product datasheet for **TA351993**

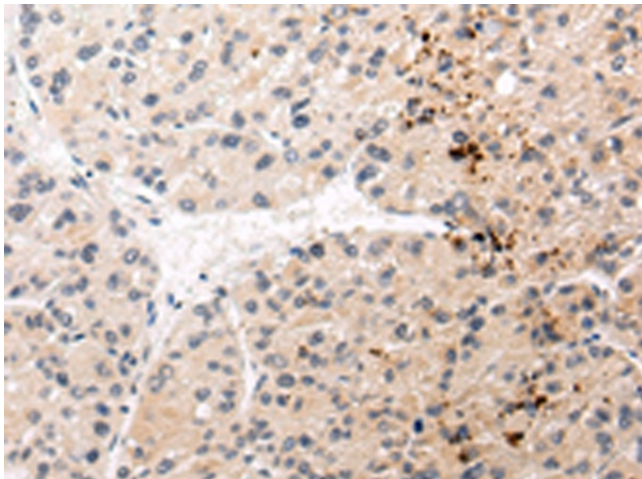
AQP11 Rabbit Polyclonal Antibody

Product data:

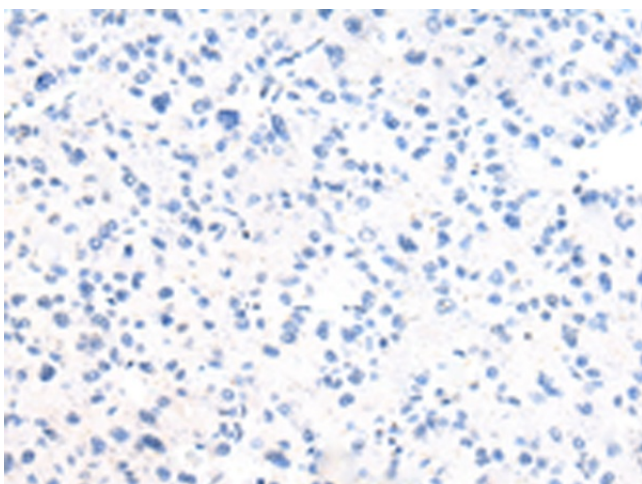
Product Type:	Primary Antibodies
Applications:	IHC
Recommended Dilution:	IHC: 20-100 Positive control: Human liver cancer Predicted cell location: Cytoplasm
Reactivity:	Human
Host:	Rabbit
Isotype:	IgG
Clonality:	Polyclonal
Immunogen:	Synthetic peptide of human AQP11
Formulation:	pH7.4 PBS, 0.05% NaN ₃ , 40% Glycerol
Concentration:	lot specific
Purification:	Antigen affinity purification
Conjugation:	Unconjugated
Storage:	Store at -20°C as received.
Stability:	Stable for 12 months from date of receipt.
Gene Name:	aquaporin 11
Database Link:	NP_766627 Entrez Gene 282679 Human Q8NBQ7
Background:	Aquaporins facilitate the transport of water and small neutral solutes across cell membranes.
Synonyms:	AQPX1
Protein Families:	Transmembrane



[View online »](#)

Product images:

Immunohistochemistry of paraffin-embedded Human liver cancer tissue using TA351993 (AQP11 Antibody) at dilution 1/30 (Original magnification: $\times 200$)



Immunohistochemistry of paraffin-embedded Human liver cancer tissue using TA351993 (AQP11 Antibody) at dilution 1/30, treated with synthetic peptide. (Original magnification: $\times 200$)