

Product datasheet for **TA351982S**

AP2 alpha (AP2A1) Rabbit Polyclonal Antibody

Product data:

Product Type:	Primary Antibodies
Applications:	IHC, WB
Recommended Dilution:	WB: 500-2000 WB positive control: A431, 231 and NIH/3T3 cell IHC: 25-100 Positive control: Human liver cancer Predicted cell location: Cytoplasm
Reactivity:	Human, Mouse
Host:	Rabbit
Isotype:	IgG
Clonality:	Polyclonal
Immunogen:	Synthetic peptide of human AP2A1
Formulation:	pH7.4 PBS, 0.05% NaN ₃ , 40% Glycerol
Purification:	Antigen affinity purification
Conjugation:	Unconjugated
Storage:	Store at -20°C as received.
Stability:	Stable for 12 months from date of receipt.
Predicted Protein Size:	108 kDa
Gene Name:	adaptor related protein complex 2 alpha 1 subunit
Database Link:	NP_570603 Entrez Gene 11771 Mouse Entrez Gene 160 Human O95782

Background: This gene encodes the alpha 1 adaptin subunit of the adaptor protein 2 (AP-2) complex found in clathrin coated vesicles. The AP-2 complex is a heterotetramer consisting of two large adaptins (alpha or beta), a medium adaptin (mu), and a small adaptin (sigma). The complex is part of the protein coat on the cytoplasmic face of coated vesicles which links clathrin to receptors in vesicles. Alternative splicing of this gene results in two transcript variants encoding two different isoforms.

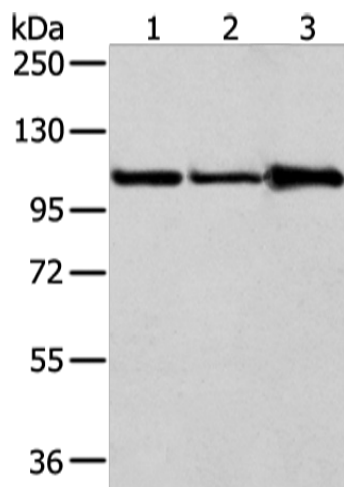


[View online »](#)

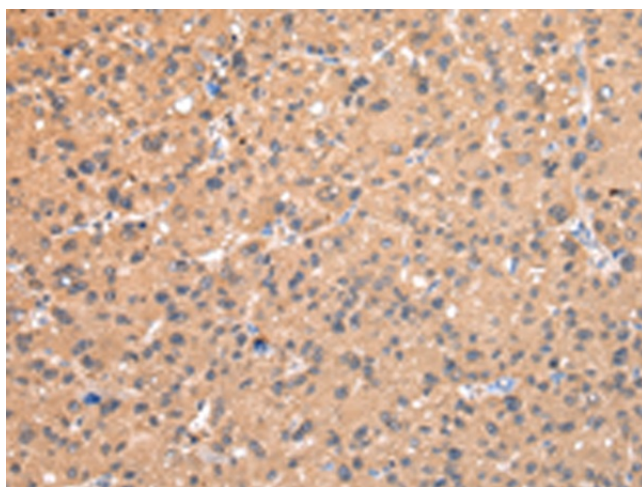
Synonyms: ADTAA; AP2-ALPHA; CLAPA1

Protein Pathways: Endocytosis, Huntington's disease

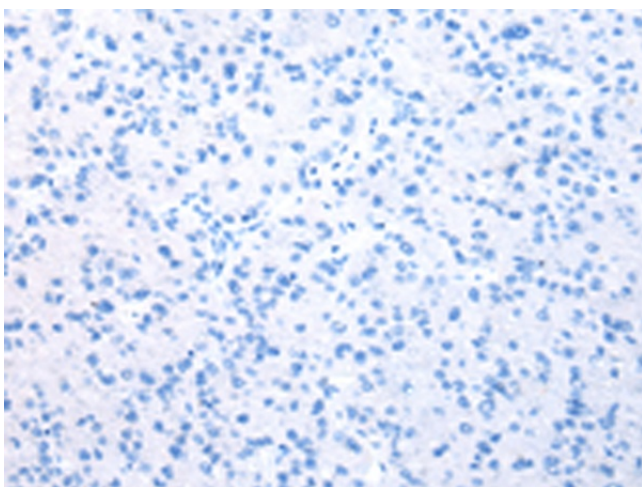
Product images:



Gel: 6%SDS-PAGE
 Lysate: 40 µg
 Lane 1-3: A431
 231 and NIH/3T3 cell
 Primary antibody: [TA351982] (AP2A1 Antibody)
 at dilution 1/250
 Secondary antibody: Goat anti rabbit IgG at
 1/8000 dilution
 Exposure time: 15 seconds



Immunohistochemistry of paraffin-embedded
 Human liver cancer tissue using [TA351982]
 (AP2A1 Antibody) at dilution 1/20 (Original
 magnification: ×200)



Immunohistochemistry of paraffin-embedded Human liver cancer tissue using [TA351982] (AP2A1 Antibody) at dilution 1/20, treated with synthetic peptide. (Original magnification: ×200)