

## Product datasheet for **TA351981S**

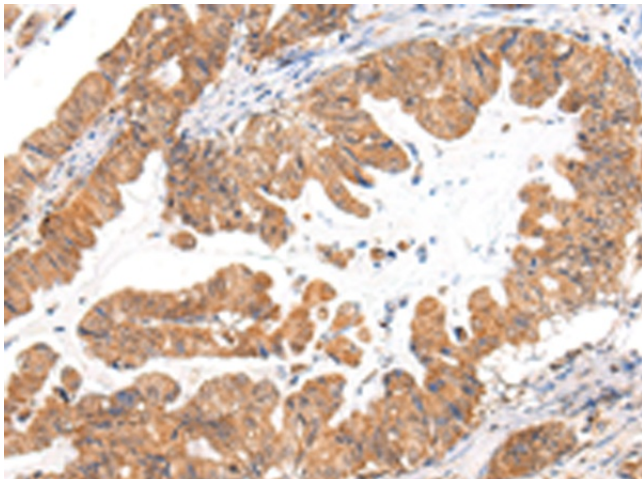
### CASZ1 Rabbit Polyclonal Antibody

#### Product data:

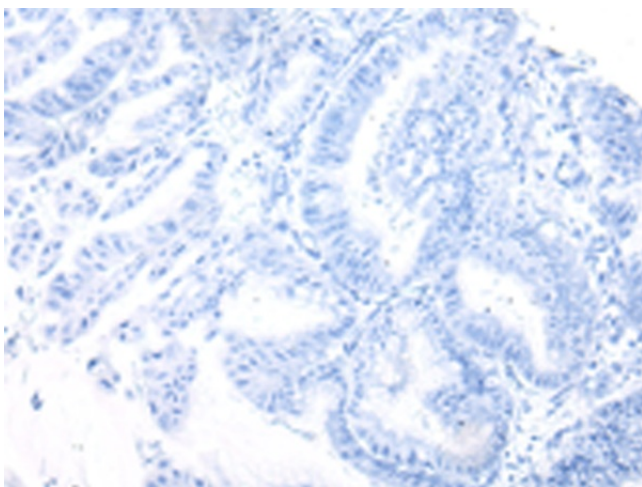
Product Type:	Primary Antibodies
Applications:	IHC
Recommended Dilution:	IHC: 25-100 Positive control: Human esophagus cancer Predicted cell location: Nucleus
Reactivity:	Human, Mouse
Host:	Rabbit
Isotype:	IgG
Clonality:	Polyclonal
Immunogen:	Synthetic peptide of human CASZ1
Formulation:	pH7.4 PBS, 0.05% NaN <sub>3</sub> , 40% Glycerol
Purification:	Antigen affinity purification
Conjugation:	Unconjugated
Storage:	Store at -20°C as received.
Stability:	Stable for 12 months from date of receipt.
Gene Name:	castor zinc finger 1
Database Link:	<a href="#">NP_060236</a> <a href="#">Entrez Gene 69743 Mouse</a> <a href="#">Entrez Gene 54897 Human</a> <a href="#">Q86V15</a>
Background:	The protein encoded by this gene is a zinc finger transcription factor. The encoded protein may function as a tumor suppressor, and single nucleotide polymorphisms in this gene are associated with blood pressure variation. Alternative splicing results in multiple transcript variants that encode different protein isoforms.
Synonyms:	CAS11; CST; dj734G22.1; SRG; ZNF693



[View online »](#)

**Product images:**

Immunohistochemistry of paraffin-embedded Human esophagus cancer tissue using [TA351981] (CASZ1 Antibody) at dilution 1/20 (Original magnification:  $\times 200$ )



Immunohistochemistry of paraffin-embedded Human esophagus cancer tissue using [TA351981] (CASZ1 Antibody) at dilution 1/20, treated with synthetic peptide. (Original magnification:  $\times 200$ )