

## Product datasheet for **TA351977**

### ZNF146 Rabbit Polyclonal Antibody

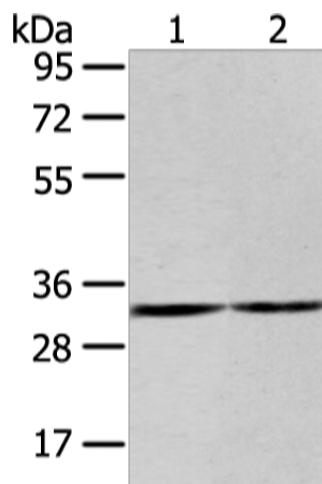
#### Product data:

Product Type:	Primary Antibodies
Applications:	WB
Recommended Dilution:	WB: 200-1000 WB positive control: 231 and K562 cell
Reactivity:	Human, Mouse
Host:	Rabbit
Isotype:	IgG
Clonality:	Polyclonal
Immunogen:	Synthetic peptide of human ZNF146
Formulation:	pH7.4 PBS, 0.05% NaN <sub>3</sub> , 40% Glycerol
Concentration:	lot specific
Purification:	Antigen affinity purification
Conjugation:	Unconjugated
Storage:	Store at -20°C as received.
Stability:	Stable for 12 months from date of receipt.
Predicted Protein Size:	33 kDa
Gene Name:	zinc finger protein 146
Database Link:	<a href="#">NP_009076</a> <a href="#">Entrez Gene 7705 Human</a> <a href="#">Q15072</a>
Background:	ZNF146 (zinc finger protein 146), also known as OZF (only zinc finger protein), is a 292 amino acid nuclear protein that binds DNA and belongs to the Krüppel C2H2-type zinc-finger protein family. ZNF146 interacts with UBC9 (ubiquitin carrier protein 9) and RAP1 (repressor/activator protein 1 homolog), and is highly expressed in multiple pancreatic and colorectal cancers. Lower levels of expression have been observed in kidney, lung, placenta and brain.
Synonyms:	OZF
Protein Families:	Transcription Factors



[View online »](#)

## Product images:



Gel: 8%SDS-PAGE  
Lysate: 40  $\mu$ g  
Lane 1-2: 231 and K562 cell  
Primary antibody: TA351977 (ZNF146 Antibody)  
at dilution 1/200  
Secondary antibody: Goat anti rabbit IgG at  
1/8000 dilution  
Exposure time: 20 seconds