

## Product datasheet for **TA351972**

### ZNF289 (ARFGAP2) Rabbit Polyclonal Antibody

#### Product data:

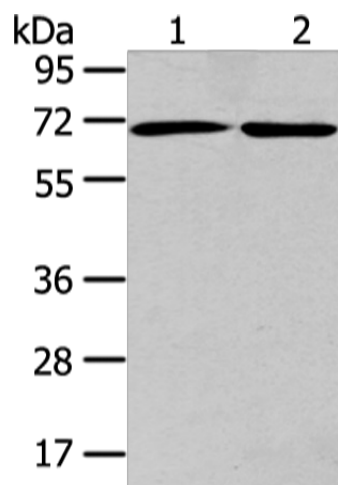
Product Type:	Primary Antibodies
Applications:	IHC, WB
Recommended Dilution:	WB: 500-2000 WB positive control: A431 and hela cell IHC: 20-100 Positive control: Human colorectal cancer Predicted cell location: Cytoplasm
Reactivity:	Human, Mouse, Rat
Host:	Rabbit
Isotype:	IgG
Clonality:	Polyclonal
Immunogen:	Synthetic peptide of human ARFGAP2
Formulation:	pH7.4 PBS, 0.05% NaN <sub>3</sub> , 40% Glycerol
Concentration:	lot specific
Purification:	Antigen affinity purification
Conjugation:	Unconjugated
Storage:	Store at -20°C as received.
Stability:	Stable for 12 months from date of receipt.
Predicted Protein Size:	57 kDa
Gene Name:	ADP ribosylation factor GTPase activating protein 2
Database Link:	<a href="#">NP_115765</a> <a href="#">Entrez Gene 77038 Mouse</a> <a href="#">Entrez Gene 362162 Rat</a> <a href="#">Entrez Gene 84364 Human</a> <a href="#">Q8N6H7</a>
Background:	ZNF289 (zinc finger protein 289), also known as ARFGAP2 (ADP-ribosylation factor GTPase activating protein 2), IRZ, Zfp289 or Nbla10535, functions as a GTPase-activating protein (GAP) for ARF family proteins. Localizing to the cytoplasmic side of the Golgi apparatus, ZNF289 contains one ARF-GAP domain and is found associated with COP-I-coated vesicles.
Synonyms:	IRZ; NBLA10535; ZFP289; ZNF289



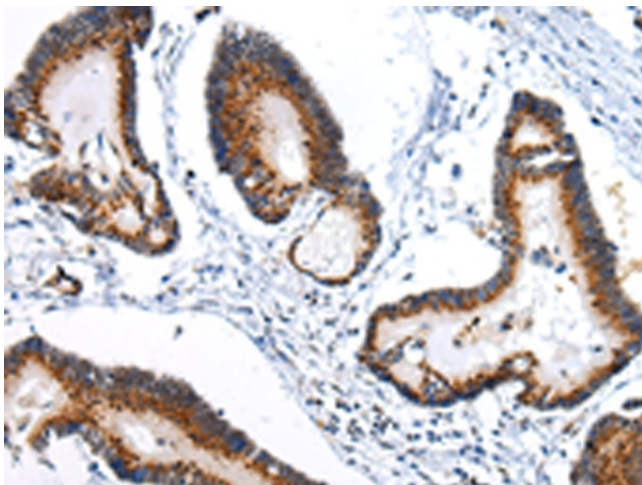
[View online »](#)

Protein Pathways: Endocytosis

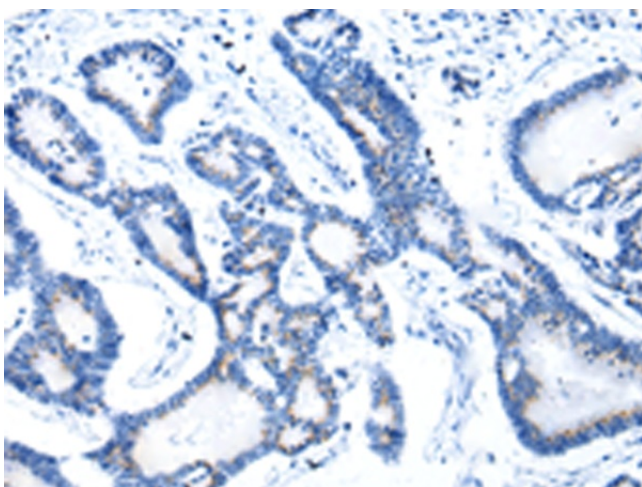
### Product images:



Gel: 8%SDS-PAGE  
Lysate: 40  $\mu$ g  
Lane 1-2: A431 and hela cell  
Primary antibody: TA351972 (ARFGAP2 Antibody)  
at dilution 1/200  
Secondary antibody: Goat anti rabbit IgG at  
1/8000 dilution  
Exposure time: 15 seconds



Immunohistochemistry of paraffin-embedded  
Human colorectal cancer tissue using TA351972  
(ARFGAP2 Antibody) at dilution 1/25 (Original  
magnification:  $\times 200$ )



Immunohistochemistry of paraffin-embedded Human colorectal cancer tissue using TA351972 (ARFGAP2 Antibody) at dilution 1/25, treated with synthetic peptide. (Original magnification: ×200)