

Product datasheet for **TA351966**

ZFAND2A Rabbit Polyclonal Antibody

Product data:

Product Type:	Primary Antibodies
Applications:	IHC, WB
Recommended Dilution:	WB: 200-1000 WB positive control: Human normal kidney tissue IHC: 25-100 Positive control: Human liver cancer Predicted cell location: Cytoplasm
Reactivity:	Human
Host:	Rabbit
Isotype:	IgG
Clonality:	Polyclonal
Immunogen:	Synthetic peptide of human ZFAND2A
Formulation:	pH7.4 PBS, 0.05% NaN ₃ , 40% Glycerol
Concentration:	lot specific
Purification:	Antigen affinity purification
Conjugation:	Unconjugated
Storage:	Store at -20°C as received.
Stability:	Stable for 12 months from date of receipt.
Predicted Protein Size:	16 kDa
Gene Name:	zinc finger AN1-type containing 2A
Database Link:	NP_872297 Entrez Gene 90637 Human Q8N6M9

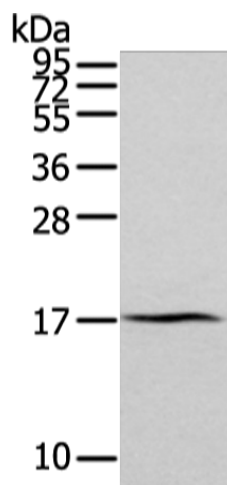
Background: ZFAND2A (AN1-type zinc finger protein 2A) is a 171 amino acid protein containing two AN1-type zinc fingers. AN1-type zinc fingers contain six conserved cysteines, two histidines and have a dimetal (zinc)-bound alpha/beta fold. The gene encoding ZFAND2A maps to human chromosome 7, which houses over 1,000 genes and comprises nearly 5% of the human genome.



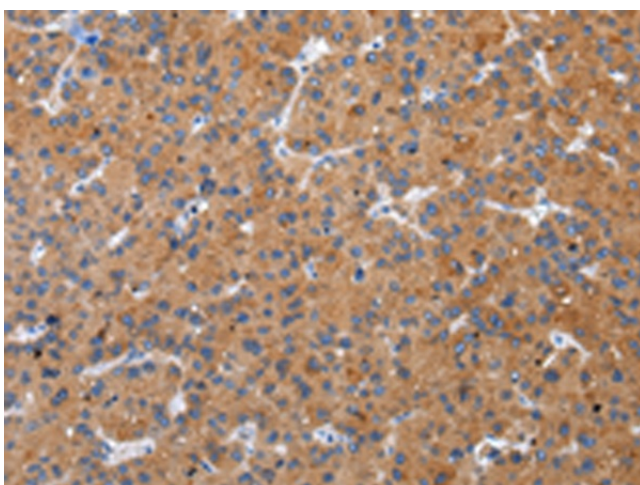
[View online »](#)

Synonyms: AIRAP

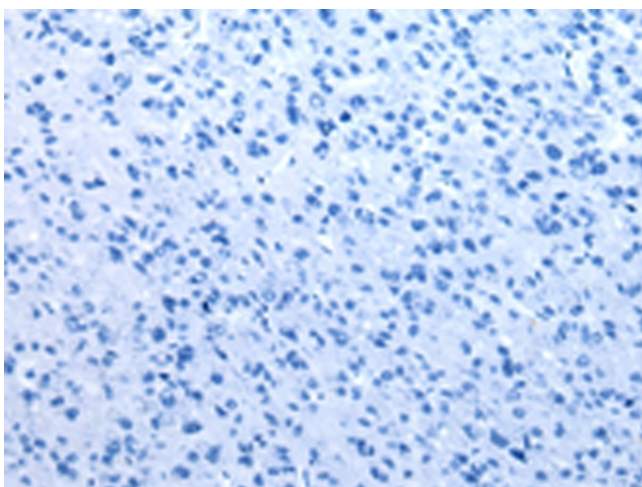
Product images:



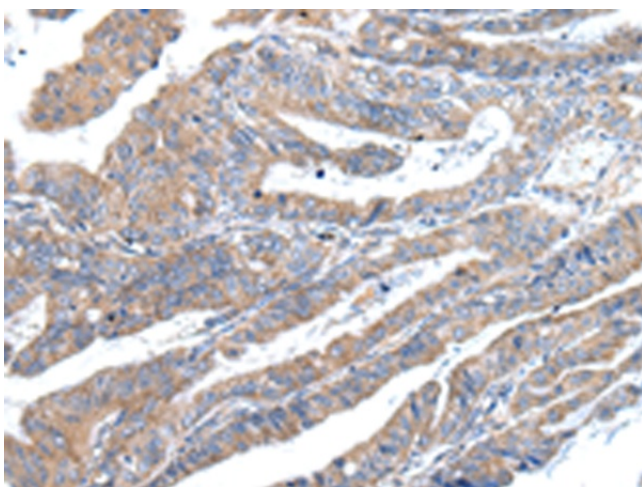
Gel: 12%SDS-PAGE
 Lysate: 40 µg
 Lane: Human normal kidney tissue
 Primary antibody: TA351966 (ZFAND2A Antibody)
 at dilution 1/300
 Secondary antibody: Goat anti rabbit IgG at
 1/8000 dilution
 Exposure time: 2 minutes



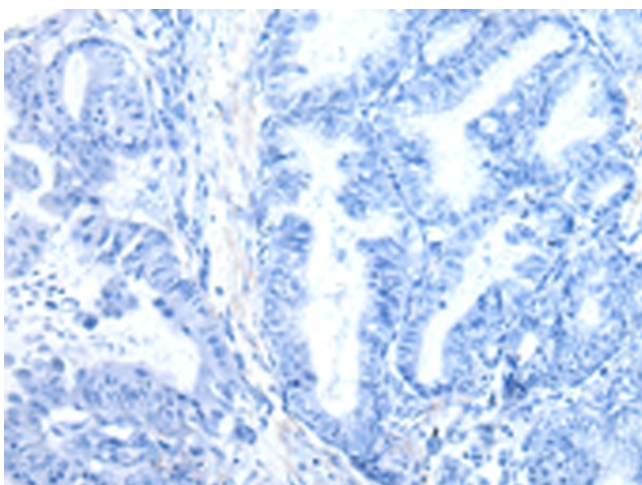
Immunohistochemistry of paraffin-embedded
 Human liver cancer tissue using TA351966
 (ZFAND2A Antibody) at dilution 1/30 (Original
 magnification: ×200)



Immunohistochemistry of paraffin-embedded Human liver cancer tissue using TA351966 (ZFAND2A Antibody) at dilution 1/30, treated with synthetic peptide. (Original magnification: ×200)



Immunohistochemistry of paraffin-embedded Human esophagus cancer tissue using TA351966 (ZFAND2A Antibody) at dilution 1/30 (Original magnification: ×200)



Immunohistochemistry of paraffin-embedded Human esophagus cancer tissue using TA351966 (ZFAND2A Antibody) at dilution 1/30, treated with synthetic peptide. (Original magnification: ×200)