

Product datasheet for **TA351961**

XKR3 Rabbit Polyclonal Antibody

Product data:

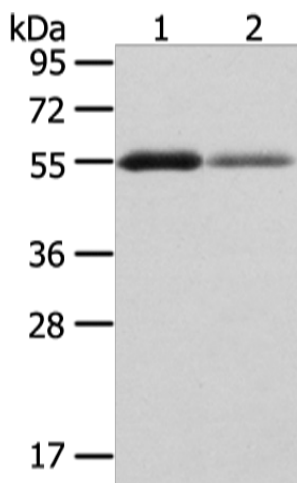
Product Type:	Primary Antibodies
Applications:	IHC, WB
Recommended Dilution:	WB: 200-1000 WB positive control: Human thyroid cancer and normal stomach tissue IHC: 10-50 Positive control: Human liver cancer Predicted cell location: Cytoplasm
Reactivity:	Human
Host:	Rabbit
Isotype:	IgG
Clonality:	Polyclonal
Immunogen:	Synthetic peptide of human XKR3
Formulation:	pH7.4 PBS, 0.05% NaN ₃ , 40% Glycerol
Concentration:	lot specific
Purification:	Antigen affinity purification
Conjugation:	Unconjugated
Storage:	Store at -20°C as received.
Stability:	Stable for 12 months from date of receipt.
Predicted Protein Size:	53 kDa
Gene Name:	XK related 3
Database Link:	NP_787074 Entrez Gene 150165 Human Q5GH77
Background:	XKRX (MIM 300684) and XKR3 are homologs of the Kell blood group precursor XK (MIM 314850), which is a putative membrane transporter and a component of the XK/Kell complex of the Kell blood group system (Calenda et al., 2006 [PubMed 16431037]).
Synonyms:	XRG3; XTES



[View online »](#)

Protein Families: Transmembrane

Product images:



Gel: 8%SDS-PAGE

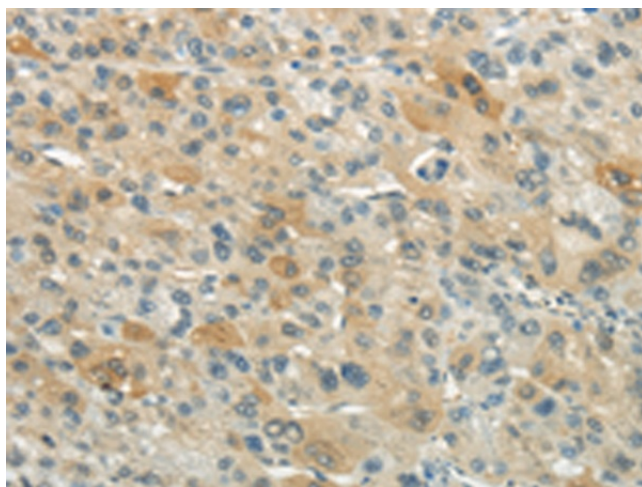
Lysate: 40 μ g

Lane 1-2: Human thyroid cancer and normal stomach tissue

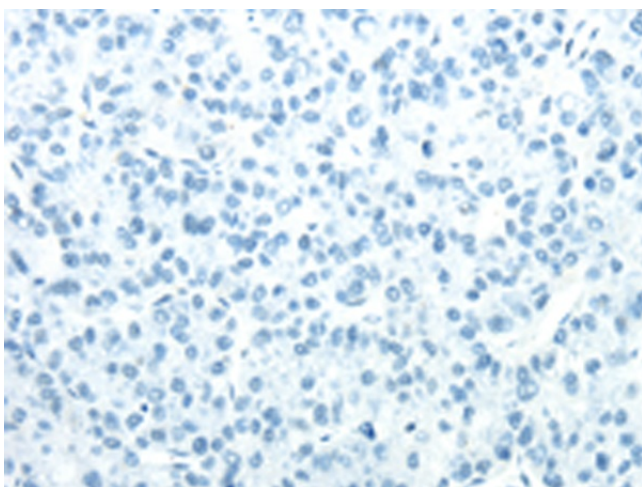
Primary antibody: TA351961 (XKR3 Antibody) at dilution 1/200

Secondary antibody: Goat anti rabbit IgG at 1/8000 dilution

Exposure time: 2 minutes



Immunohistochemistry of paraffin-embedded Human liver cancer tissue using TA351961 (XKR3 Antibody) at dilution 1/20 (Original magnification: $\times 200$)



Immunohistochemistry of paraffin-embedded Human liver cancer tissue using TA351961 (XKR3 Antibody) at dilution 1/20, treated with synthetic peptide. (Original magnification: $\times 200$)