

Product datasheet for **TA351958S**

xCT (SLC7A11) Rabbit Polyclonal Antibody

Product data:

| | |
|-------------------------|---|
| Product Type: | Primary Antibodies |
| Applications: | IHC, WB |
| Recommended Dilution: | WB: 1000-5000 WB positive control: HepG2 and 293T cell lysates IHC: 50-100 Positive control: Human cervical cancer Predicted cell location: Cytoplasm and Cell membrane |
| Reactivity: | Human, Mouse |
| Host: | Rabbit |
| Isotype: | IgG |
| Clonality: | Polyclonal |
| Immunogen: | Synthetic peptide of human SLC7A11 |
| Formulation: | pH7.4 PBS, 0.05% NaN ₃ , 40% Glycerol |
| Purification: | Antigen affinity purification |
| Conjugation: | Unconjugated |
| Storage: | Store at -20°C as received. |
| Stability: | Stable for 12 months from date of receipt. |
| Predicted Protein Size: | 55 kDa |
| Gene Name: | solute carrier family 7 member 11 |
| Database Link: | NP_055146 Entrez Gene 26570 Mouse Entrez Gene 23657 Human Q9UPY5 |



[View online »](#)

Background:

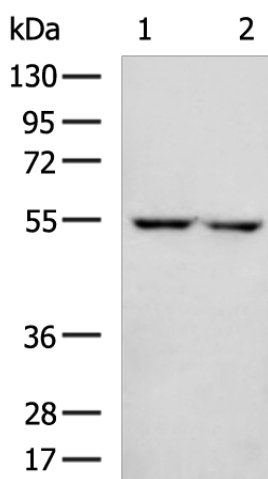
This gene encodes a member of a heteromeric, sodium-independent, anionic amino acid transport system that is highly specific for cysteine and glutamate. In this system, designated Xc(-), the anionic form of cysteine is transported in exchange for glutamate. This protein has been identified as the predominant mediator of Kaposi sarcoma-associated herpesvirus fusion and entry permissiveness into cells. Also, increased expression of this gene in primary gliomas (compared to normal brain tissue) was associated with increased glutamate secretion via the XCT channels, resulting in neuronal cell death.

Synonyms:

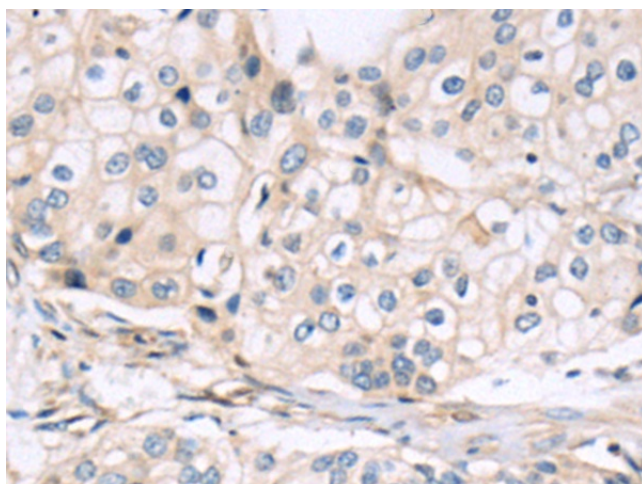
CCBR1; xCT

Protein Families:

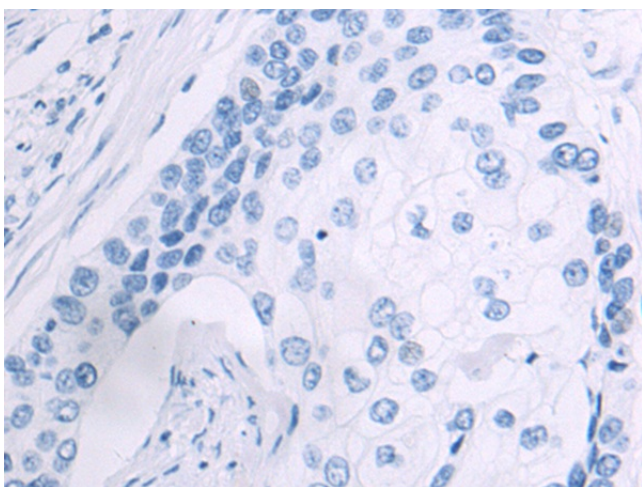
Druggable Genome, Transmembrane

Product images:


Gel: 8%SDS-PAGE
 Lysate: 40 µg
 Lane 1-2: HepG2 and 293T cell lysates
 Primary antibody: [TA351958] (SLC7A11 Antibody) at dilution 1/1600
 Secondary antibody: Goat anti rabbit IgG at 1/5000 dilution
 Exposure time: 1 minute



Immunohistochemistry of paraffin-embedded Human cervical cancer tissue using [TA351958] (SLC7A11 Antibody) at dilution 1/50 (Original magnification: ×200)



Immunohistochemistry of paraffin-embedded Human cervical cancer tissue using [TA351958] (SLC7A11 Antibody) at dilution 1/50, treated with synthetic peptide. (Original magnification: ×200)