

Product datasheet for **TA351956S**

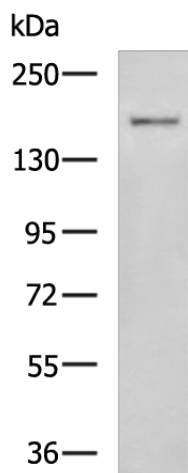
WSTF (BAZ1B) Rabbit Polyclonal Antibody

Product data:

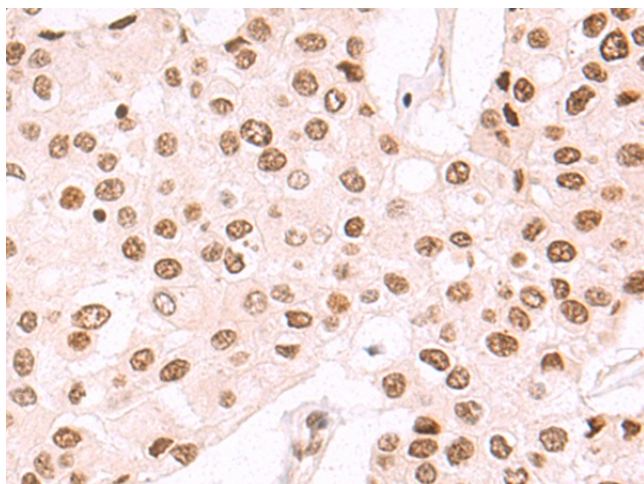
Product Type:	Primary Antibodies
Applications:	IHC, WB
Recommended Dilution:	WB: 500-2000 WB positive control: SKOV3 cell lysate IHC: 50-200 Positive control: Human breast cancer Predicted cell location: Nucleus
Reactivity:	Human, Mouse
Host:	Rabbit
Isotype:	IgG
Clonality:	Polyclonal
Immunogen:	Synthetic peptide of human BAZ1B
Formulation:	pH7.4 PBS, 0.05% NaN ₃ , 40% Glycerol
Purification:	Antigen affinity purification
Conjugation:	Unconjugated
Storage:	Store at -20°C as received.
Stability:	Stable for 12 months from date of receipt.
Gene Name:	bromodomain adjacent to zinc finger domain 1B
Database Link:	NP_115784 Entrez Gene 22385 Mouse Entrez Gene 9031 Human Q9UIG0
Background:	This gene encodes a member of the bromodomain protein family. The bromodomain is a structural motif characteristic of proteins involved in chromatin-dependent regulation of transcription. This gene is deleted in Williams-Beuren syndrome, a developmental disorder caused by deletion of multiple genes at 7q11.23.
Synonyms:	WBSCR9; WBSCR10; WSTF
Protein Families:	Druggable Genome, Transcription Factors



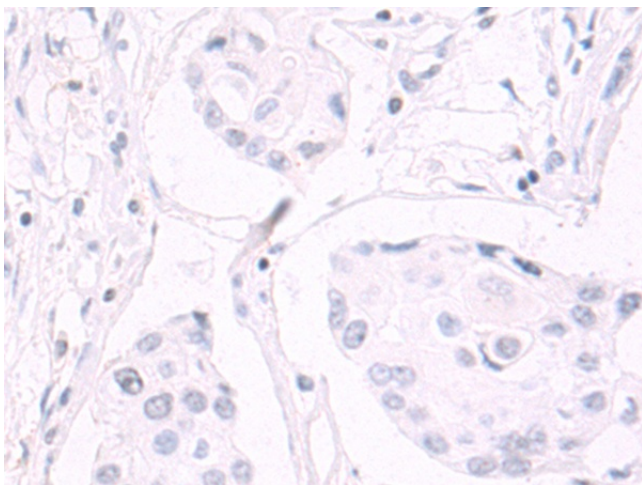
[View online »](#)

Product images:

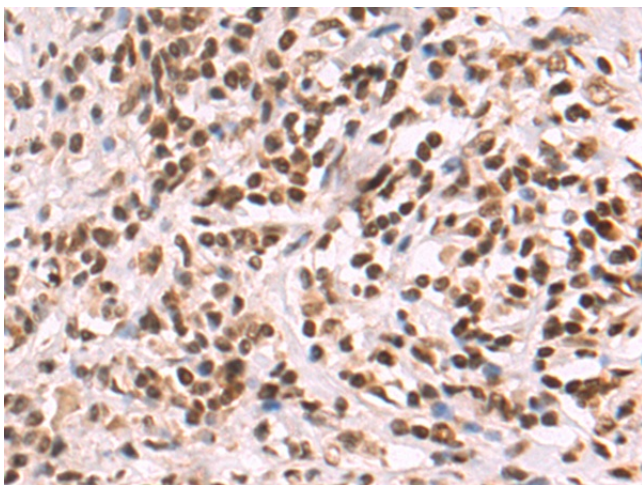
Gel: 6%SDS-PAGE
Lysate: 40 μ g
Lane: SKOV3 cell lysate
Primary antibody: [TA351956] (BAZ1B Antibody) at dilution 1/1000
Secondary antibody: Goat anti rabbit IgG at 1/5000 dilution
Exposure time: 10 seconds



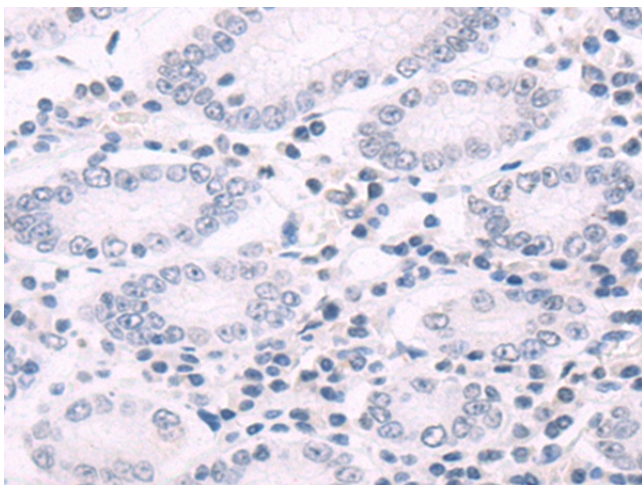
Immunohistochemistry of paraffin-embedded Human breast cancer tissue using [TA351956] (BAZ1B Antibody) at dilution 1/50 (Original magnification: \times 200)



Immunohistochemistry of paraffin-embedded Human breast cancer tissue using [TA351956] (BAZ1B Antibody) at dilution 1/50, treated with synthetic peptide. (Original magnification: ×200)



Immunohistochemistry of paraffin-embedded Human gastric cancer tissue using [TA351956] (BAZ1B Antibody) at dilution 1/50 (Original magnification: ×200)



Immunohistochemistry of paraffin-embedded Human gastric cancer tissue using [TA351956] (BAZ1B Antibody) at dilution 1/50, treated with synthetic peptide. (Original magnification: ×200)