

## Product datasheet for **TA351954**

### WRCH1 (RHOU) Rabbit Polyclonal Antibody

#### Product data:

Product Type:	Primary Antibodies
Applications:	IHC, WB
Recommended Dilution:	WB: 500-2000 WB positive control: Human heart tissue, Mouse stomach tissue lysates IHC: 50-100 Positive control: Human esophagus cancer Predicted cell location: Cytoplasm and Cell membrane
Reactivity:	Human, Mouse
Host:	Rabbit
Isotype:	IgG
Clonality:	Polyclonal
Immunogen:	Synthetic peptide of human RHOU
Formulation:	pH7.4 PBS, 0.05% NaN <sub>3</sub> , 40% Glycerol
Concentration:	lot specific
Purification:	Antigen affinity purification
Conjugation:	Unconjugated
Storage:	Store at -20°C as received.
Stability:	Stable for 12 months from date of receipt.
Gene Name:	ras homolog family member U
Database Link:	<a href="#">NP_067028</a> <a href="#">Entrez Gene 69581 Mouse</a> <a href="#">Entrez Gene 58480 Human</a> <a href="#">Q7L0Q8</a>

**Background:** This gene encodes a member of the Rho family of GTPases. This protein can activate PAK1 and JNK1, and can induce filopodium formation and stress fiber dissolution. It may also mediate the effects of WNT1 signaling in the regulation of cell morphology, cytoskeletal organization, and cell proliferation. A non-coding transcript variant of this gene results from naturally occurring read-through transcription between this locus and the neighboring DUSP5P (dual specificity phosphatase 5 pseudogene) locus.

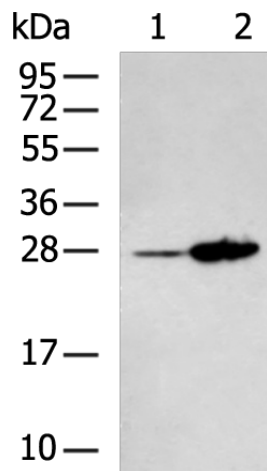


[View online »](#)

Synonyms: ARHU; CDC42L1; G28K; hG28K; WRCH1

Protein Families: Druggable Genome

### Product images:



Gel: 12%SDS-PAGE

Lysate: 40  $\mu$ g

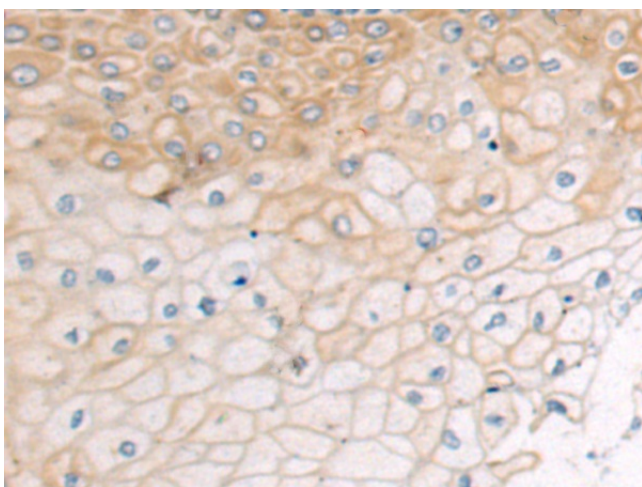
Lane 1-2: Human heart tissue

Mouse stomach tissue lysates

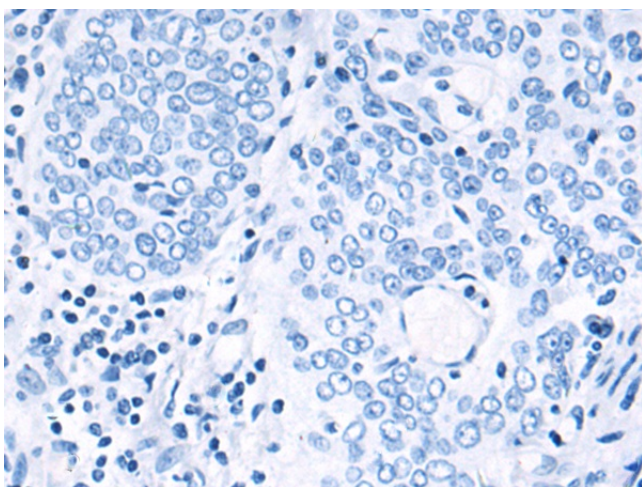
Primary antibody: TA351954 (RHOU Antibody) at dilution 1/700

Secondary antibody: Goat anti rabbit IgG at 1/5000 dilution

Exposure time: 1 minute



Immunohistochemistry of paraffin-embedded Human esophagus cancer tissue using TA351954 (RHOU Antibody) at dilution 1/50 (Original magnification:  $\times$ 200)



Immunohistochemistry of paraffin-embedded Human esophagus cancer tissue using TA351954 (RHOU Antibody) at dilution 1/50, treated with synthetic peptide. (Original magnification:  $\times 200$ )