

## Product datasheet for **TA351952**

### WNT10A Rabbit Polyclonal Antibody

#### Product data:

Product Type:	Primary Antibodies
Applications:	IHC, WB
Recommended Dilution:	WB: 200-1000 WB positive control: Mouse brain tissue IHC: 10-50 Positive control: Human thyroid cancer Predicted cell location: Cytoplasm
Reactivity:	Human, Mouse
Host:	Rabbit
Isotype:	IgG
Clonality:	Polyclonal
Immunogen:	Synthetic peptide of human WNT10A
Formulation:	pH7.4 PBS, 0.05% NaN <sub>3</sub> , 40% Glycerol
Concentration:	lot specific
Purification:	Antigen affinity purification
Conjugation:	Unconjugated
Storage:	Store at -20°C as received.
Stability:	Stable for 12 months from date of receipt.
Predicted Protein Size:	46 kDa
Gene Name:	Wnt family member 10A
Database Link:	<a href="#">NP_079492</a> <a href="#">Entrez Gene 22409 Mouse</a> <a href="#">Entrez Gene 80326 Human</a> <a href="#">Q9GZT5</a>



[View online »](#)

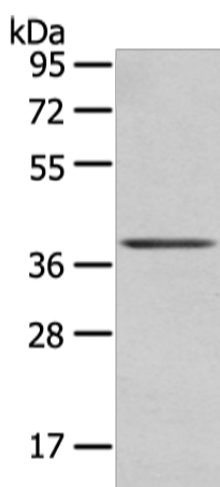
**Background:** The WNT gene family consists of structurally related genes which encode secreted signaling proteins. These proteins have been implicated in oncogenesis and in several developmental processes, including regulation of cell fate and patterning during embryogenesis. This gene is a member of the WNT gene family. It is strongly expressed in the cell lines of promyelocytic leukemia and Burkitt's lymphoma. In addition, it and another family member, the WNT6 gene, are strongly coexpressed in colorectal cancer cell lines.

**Synonyms:** OODD; SSPS; STHAG4

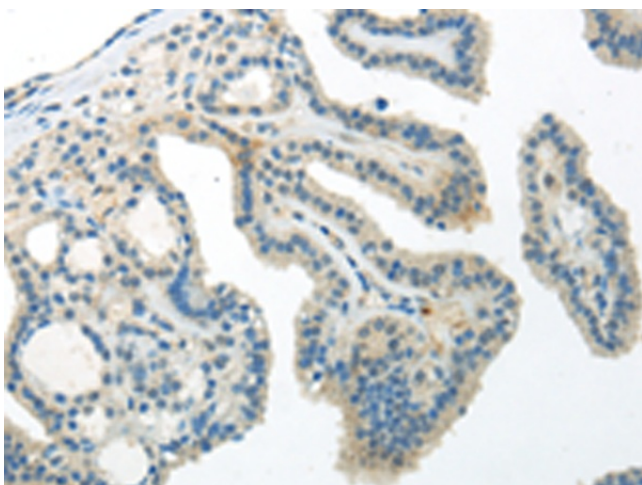
**Protein Families:** Secreted Protein, Transmembrane

**Protein Pathways:** Basal cell carcinoma, Hedgehog signaling pathway, Melanogenesis, Pathways in cancer, Wnt signaling pathway

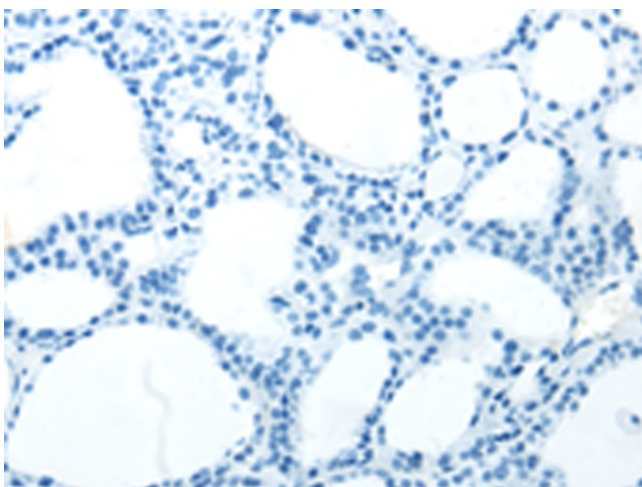
### Product images:



Gel: 8%SDS-PAGE  
Lysate: 40 µg  
Lane: Mouse brain tissue  
Primary antibody: TA351952 (WNT10A Antibody) at dilution 1/200  
Secondary antibody: Goat anti rabbit IgG at 1/8000 dilution  
Exposure time: 10 seconds



Immunohistochemistry of paraffin-embedded Human thyroid cancer tissue using TA351952 (WNT10A Antibody) at dilution 1/30 (Original magnification: ×200)



Immunohistochemistry of paraffin-embedded Human thyroid cancer tissue using TA351952 (WNT10A Antibody) at dilution 1/30, treated with synthetic peptide. (Original magnification: ×200)