

Product datasheet for **TA351946**

PDPN Rabbit Polyclonal Antibody

Product data:

Product Type:	Primary Antibodies
Applications:	IHC, WB
Recommended Dilution:	WB: 500-2000 WB positive control: 293T and Hela cells IHC: 10-50 Positive control: Human thyroid cancer Predicted cell location: Cell membrane
Reactivity:	Human
Host:	Rabbit
Isotype:	IgG
Clonality:	Polyclonal
Immunogen:	Synthetic peptide of human PDPN
Formulation:	pH7.4 PBS, 0.05% NaN ₃ , 40% Glycerol
Concentration:	lot specific
Purification:	Antigen affinity purification
Conjugation:	Unconjugated
Storage:	Store at -20°C as received.
Stability:	Stable for 12 months from date of receipt.
Predicted Protein Size:	17 kDa; 25 kDa
Gene Name:	podoplanin
Database Link:	NP_006465 Entrez Gene 10630 Human Q86YL7



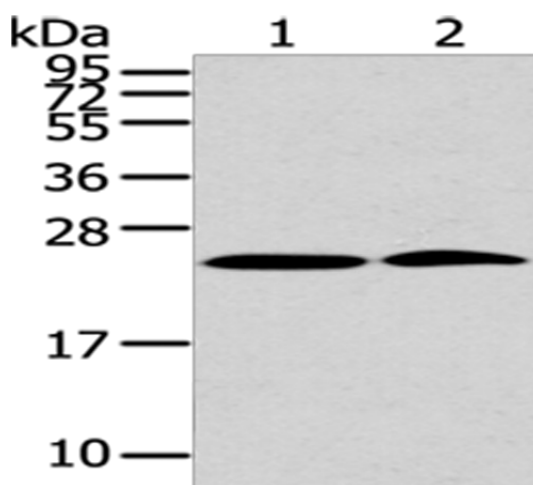
[View online »](#)

Background: This gene encodes a type-I integral membrane glycoprotein with diverse distribution in human tissues. The physiological function of this protein may be related to its mucin-type character. The homologous protein in other species has been described as a differentiation antigen and influenza-virus receptor. The specific function of this protein has not been determined but it has been proposed as a marker of lung injury. Alternatively spliced transcript variants encoding different isoforms have been identified.

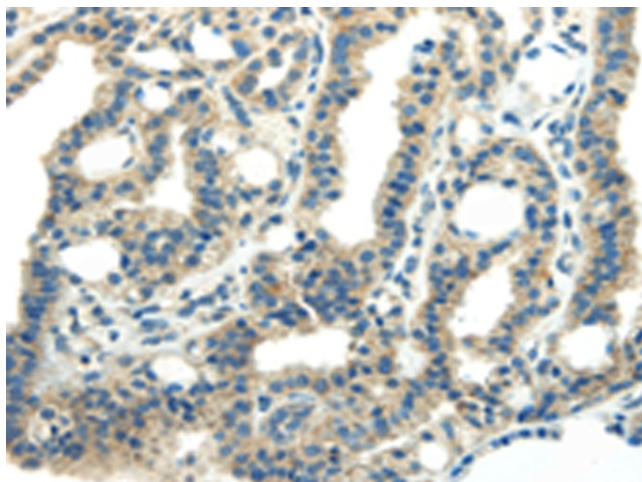
Synonyms: AGGRUS; GP36; Gp38; GP40; HT1A-1; OTS8; PA2.26; T1A; T1A-2; T1A2; T11A

Protein Families: Druggable Genome, Transmembrane

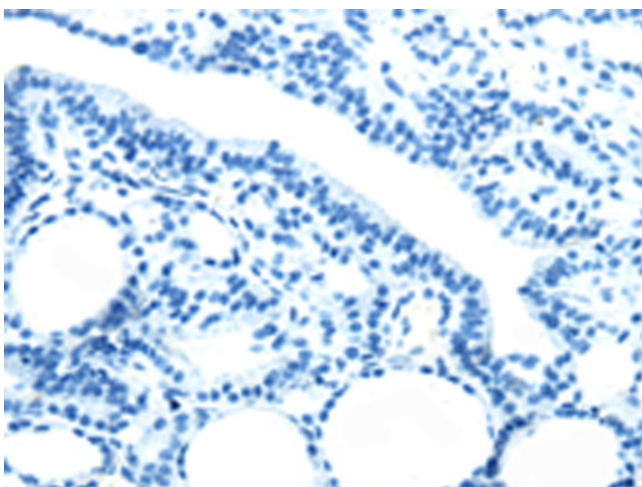
Product images:



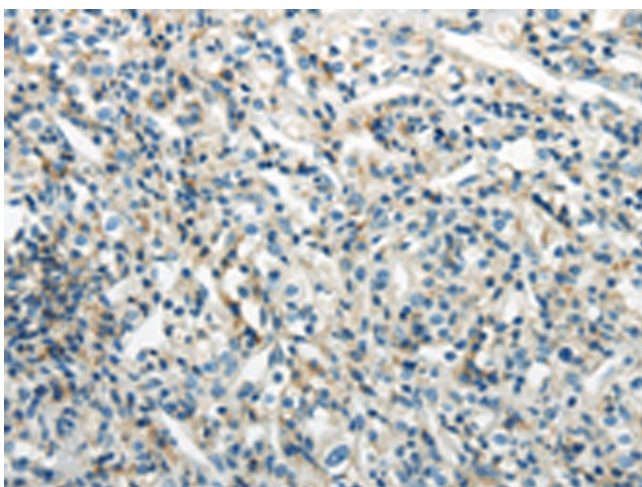
Gel: 12%SDS-PAGE
Lysate: 40 µg
Lane 1-2: 293T cells
Hela cells
Primary antibody: TA351946 (PDPN Antibody) at dilution 1/200
Secondary antibody: Goat anti rabbit IgG at 1/8000 dilution
Exposure time: 2 minutes



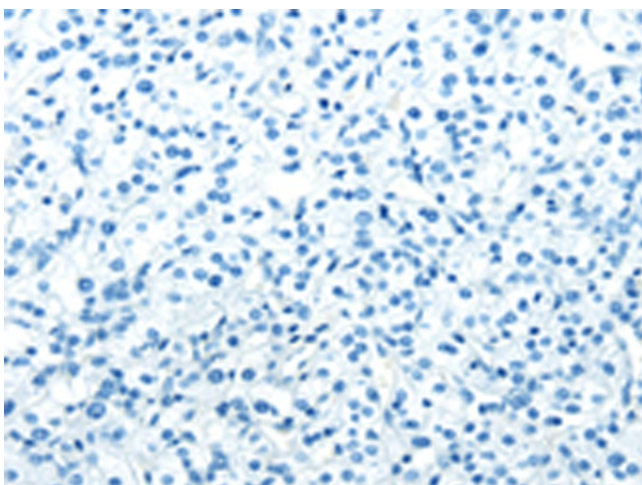
Immunohistochemistry of paraffin-embedded Human thyroid cancer tissue using TA351946 (PDPN Antibody) at dilution 1/25 (Original magnification: ×200)



Immunohistochemistry of paraffin-embedded Human thyroid cancer tissue using TA351946 (PDPN Antibody) at dilution 1/25, treated with synthetic peptide. (Original magnification: $\times 200$)



Immunohistochemistry of paraffin-embedded Human prostate cancer tissue using TA351946 (PDPN Antibody) at dilution 1/25 (Original magnification: $\times 200$)



Immunohistochemistry of paraffin-embedded Human prostate cancer tissue using TA351946 (PDPN Antibody) at dilution 1/25, treated with synthetic peptide. (Original magnification: $\times 200$)