

## Product datasheet for **TA351938**

### hnRNP Q (SYNCRIP) Rabbit Polyclonal Antibody

#### Product data:

Product Type:	Primary Antibodies
Applications:	IHC
Recommended Dilution:	IHC: 25-100 Positive control: Human esophagus cancer Predicted cell location: Cytoplasm or Nucleus
Reactivity:	Human, Mouse, Rat
Host:	Rabbit
Isotype:	IgG
Clonality:	Polyclonal
Immunogen:	Synthetic peptide of human SYNCRIP
Formulation:	pH7.4 PBS, 0.05% NaN <sub>3</sub> , 40% Glycerol
Concentration:	lot specific
Purification:	Antigen affinity purification
Conjugation:	Unconjugated
Storage:	Store at -20°C as received.
Stability:	Stable for 12 months from date of receipt.
Gene Name:	synaptotagmin binding cytoplasmic RNA interacting protein
Database Link:	<a href="#">NP_006363</a> <a href="#">Entrez Gene 56403 Mouse</a> <a href="#">Entrez Gene 363113 Rat</a> <a href="#">Entrez Gene 10492 Human</a> <a href="#">O60506</a>

**Background:** This gene encodes a member of the cellular heterogeneous nuclear ribonucleoprotein (hnRNP) family. hnRNPs are RNA binding proteins that complex with heterogeneous nuclear RNA (hnRNA) and regulate alternative splicing, polyadenylation, and other aspects of mRNA metabolism and transport. The encoded protein plays a role in multiple aspects of mRNA maturation and is associated with several multiprotein complexes including the apoB RNA editing-complex and survival of motor neurons (SMN) complex. Alternatively spliced transcript variants encoding multiple isoforms have been observed for this gene, and a pseudogene of this gene is located on the short arm of chromosome 20.

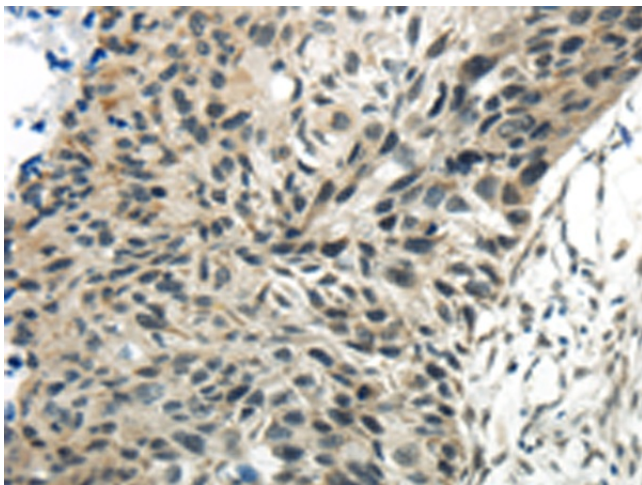


[View online »](#)

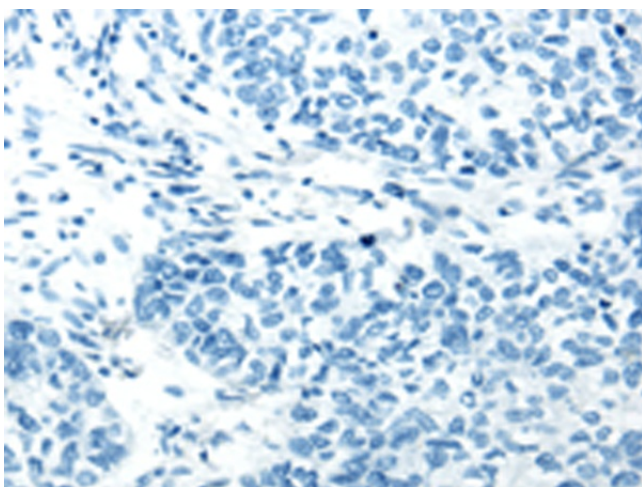
**Synonyms:** GRY-RBP; GRYRBP; hnRNP-Q; HNRNPQ; HNRPQ1; NSAP1; PP68

**Protein Families:** Stem cell - Pluripotency

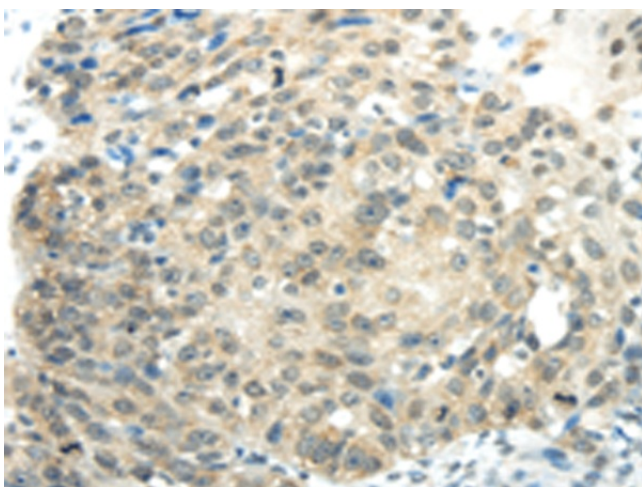
**Product images:**



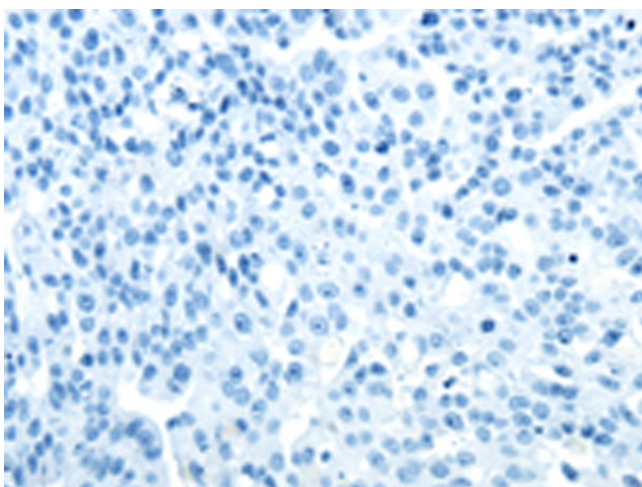
Immunohistochemistry of paraffin-embedded Human esophagus cancer tissue using TA351938 (SYNCRIP Antibody) at dilution 1/30 (Original magnification:  $\times 200$ )



Immunohistochemistry of paraffin-embedded Human esophagus cancer tissue using TA351938 (SYNCRIP Antibody) at dilution 1/30, treated with synthetic peptide. (Original magnification:  $\times 200$ )



Immunohistochemistry of paraffin-embedded Human breast cancer tissue using TA351938 (SYNCRIP Antibody) at dilution 1/30 (Original magnification:  $\times 200$ )



Immunohistochemistry of paraffin-embedded Human breast cancer tissue using TA351938 (SYNCRIP Antibody) at dilution 1/30, treated with synthetic peptide. (Original magnification:  $\times 200$ )