

Product datasheet for **TA351935**

FYN Rabbit Polyclonal Antibody

Product data:

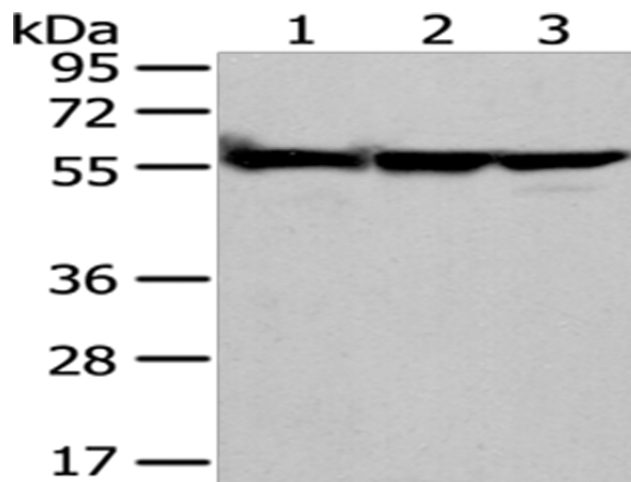
Product Type:	Primary Antibodies
Applications:	WB
Recommended Dilution:	WB: 500-2000 WB positive control: A549, hela and 293T cell
Reactivity:	Human, Mouse, Rat
Host:	Rabbit
Isotype:	IgG
Clonality:	Polyclonal
Immunogen:	Synthetic peptide of human FYN
Formulation:	pH7.4 PBS, 0.05% NaN ₃ , 40% Glycerol
Concentration:	lot specific
Purification:	Antigen affinity purification
Conjugation:	Unconjugated
Storage:	Store at -20°C as received.
Stability:	Stable for 12 months from date of receipt.
Predicted Protein Size:	61 kDa
Gene Name:	FYN proto-oncogene, Src family tyrosine kinase
Database Link:	NP_002028 Entrez Gene 14360 Mouse Entrez Gene 25150 Rat Entrez Gene 2534 Human P06241
Background:	This gene is a member of the protein-tyrosine kinase oncogene family. It encodes a membrane-associated tyrosine kinase that has been implicated in the control of cell growth. The protein associates with the p85 subunit of phosphatidylinositol 3-kinase and interacts with the fyn-binding protein. Alternatively spliced transcript variants encoding distinct isoforms exist.
Synonyms:	p59-FYN; SLK; SYN
Protein Families:	Druggable Genome, Protein Kinase



[View online »](#)

Protein Pathways: Adherens junction, Axon guidance, Fc epsilon RI signaling pathway, Focal adhesion, Natural killer cell mediated cytotoxicity, Pathogenic Escherichia coli infection, Prion diseases, T cell receptor signaling pathway, Viral myocarditis

Product images:



Gel: 8%SDS-PAGE
Lysate: 40 μ g
Lane 1-3: A549
hela and 293T cell
Primary antibody: TA351935 (FYN Antibody) at
dilution 1/200
Secondary antibody: Goat anti rabbit IgG at
1/8000 dilution
Exposure time: 10 seconds