

Product datasheet for **TA351933**

CD70 Rabbit Polyclonal Antibody

Product data:

Product Type:	Primary Antibodies
Applications:	IHC, WB
Recommended Dilution:	WB: 500-2000 WB positive control: A172 cell lysate IHC: 50-200 Positive control: Human esophagus cancer Predicted cell location: Cytoplasm and Cell membrane
Reactivity:	Human, Mouse
Host:	Rabbit
Isotype:	IgG
Clonality:	Polyclonal
Immunogen:	Synthetic peptide of human CD70
Formulation:	pH7.4 PBS, 0.05% NaN ₃ , 40% Glycerol
Concentration:	lot specific
Purification:	Antigen affinity purification
Conjugation:	Unconjugated
Storage:	Store at -20°C as received.
Stability:	Stable for 12 months from date of receipt.
Gene Name:	CD70 molecule
Database Link:	NP_001243 Entrez Gene 21948 Mouse Entrez Gene 970 Human P32970

Background: The protein encoded by this gene is a cytokine that belongs to the tumor necrosis factor (TNF) ligand family. This cytokine is a ligand for TNFRSF27/CD27. It is a surface antigen on activated, but not on resting, T and B lymphocytes. It induces proliferation of costimulated T cells, enhances the generation of cytolytic T cells, and contributes to T cell activation. This cytokine is also reported to play a role in regulating B-cell activation, cytotoxic function of natural killer cells, and immunoglobulin synthesis.



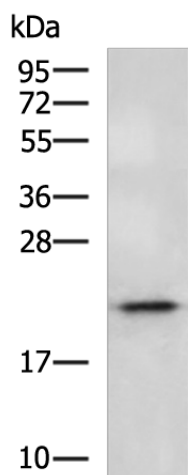
[View online »](#)

Synonyms: CD27L; CD27LG; TNFSF7

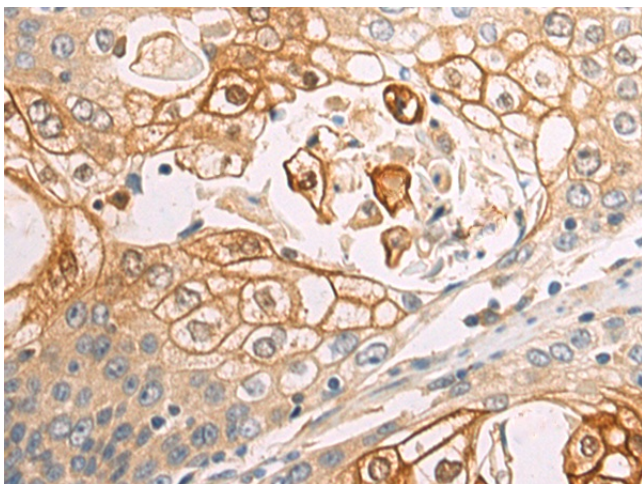
Protein Families: ES Cell Differentiation/IPS, Transmembrane

Protein Pathways: Cytokine-cytokine receptor interaction

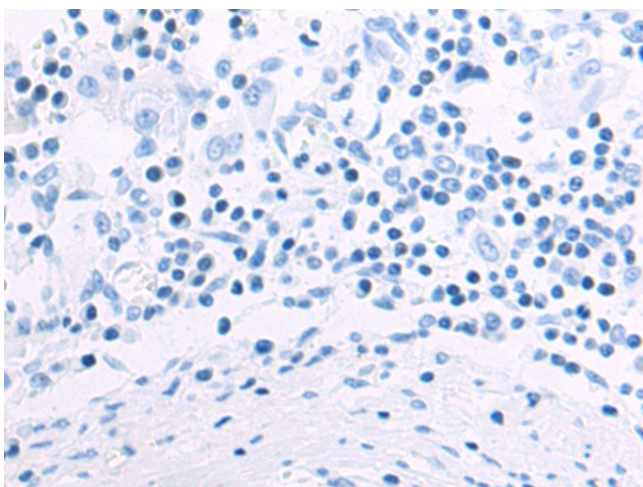
Product images:



Gel: 12%SDS-PAGE
Lysate: 40 μ g
Lane: A172 cell lysate
Primary antibody: TA351933 (CD70 Antibody) at dilution 1/1000
Secondary antibody: Goat anti rabbit IgG at 1/5000 dilution
Exposure time: 2 minutes



Immunohistochemistry of paraffin-embedded Human esophagus cancer tissue using TA351933 (CD70 Antibody) at dilution 1/60 (Original magnification: \times 200)



Immunohistochemistry of paraffin-embedded Human esophagus cancer tissue using TA351933 (CD70 Antibody) at dilution 1/60, treated with synthetic peptide. (Original magnification: ×200)