

Product datasheet for **TA351931**

WNK2 Rabbit Polyclonal Antibody

Product data:

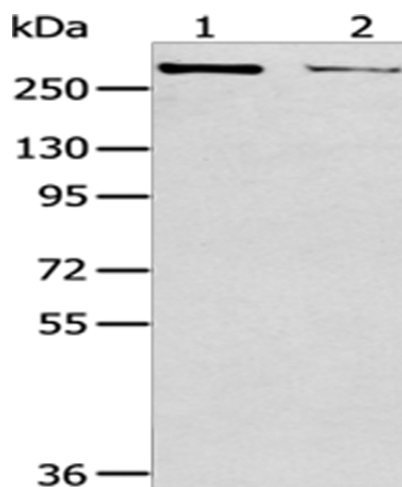
| | |
|-------------------------|---|
| Product Type: | Primary Antibodies |
| Applications: | IHC, WB |
| Recommended Dilution: | WB: 200-1000 WB positive control: MCF7 and HeLa cells IHC: 25-100 Positive control: Human brain Predicted cell location: Cytoplasm |
| Reactivity: | Human, Mouse |
| Host: | Rabbit |
| Isotype: | IgG |
| Clonality: | Polyclonal |
| Immunogen: | Synthetic peptide of human WNK2 |
| Formulation: | pH7.4 PBS, 0.05% NaN ₃ , 40% Glycerol |
| Concentration: | lot specific |
| Purification: | Antigen affinity purification |
| Conjugation: | Unconjugated |
| Storage: | Store at -20°C as received. |
| Stability: | Stable for 12 months from date of receipt. |
| Predicted Protein Size: | 243 kDa |
| Gene Name: | WNK lysine deficient protein kinase 2 |
| Database Link: | NP_006639 Entrez Gene 75607 Mouse Entrez Gene 65268 Human Q9Y3S1 |
| Background: | The protein encoded by this gene is a cytoplasmic serine-threonine kinase that belongs to the protein kinase superfamily. The protein plays an important role in the regulation of electrolyte homeostasis, cell signaling survival, and proliferation. Alternative splicing results in multiple transcript variants. |
| Synonyms: | NY-CO-43; OKcl.13; P; PRKWNK2; SDCCAG43 |



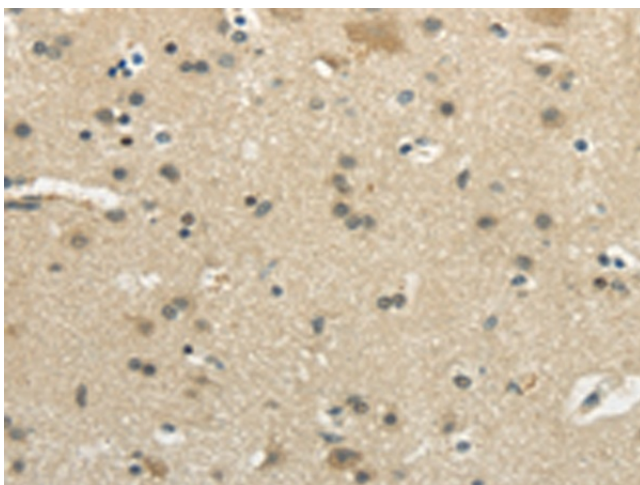
[View online »](#)

Protein Families: Druggable Genome, Protein Kinase

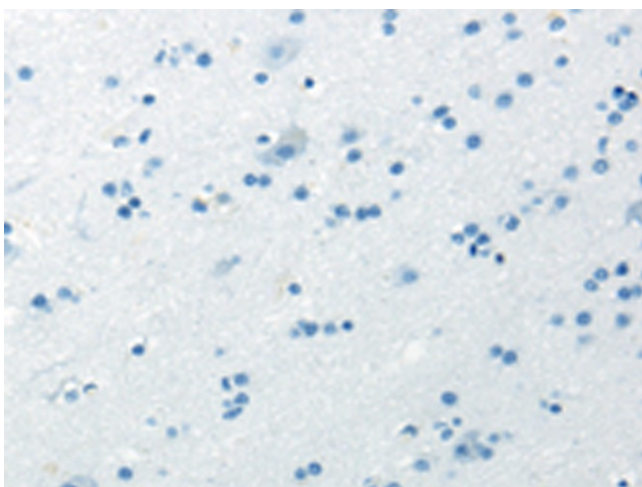
Product images:



Gel: 6%SDS-PAGE
Lysate: 40 μ g
Lane 1-2: MCF7 cells
HeLa cells
Primary antibody: TA351931 (WNK2 Antibody) at dilution 1/200
Secondary antibody: Goat anti rabbit IgG at 1/8000 dilution
Exposure time: 10 minutes



Immunohistochemistry of paraffin-embedded Human brain tissue using TA351931 (WNK2 Antibody) at dilution 1/35 (Original magnification: \times 200)



Immunohistochemistry of paraffin-embedded Human brain tissue using TA351931 (WNK2 Antibody) at dilution 1/35, treated with synthetic peptide. (Original magnification: ×200)