

Product datasheet for **TA351927**

WDR36 Rabbit Polyclonal Antibody

Product data:

Product Type:	Primary Antibodies
Applications:	IHC, WB
Recommended Dilution:	ELISA: 1000-2000, WB: 200-1000, IHC: 25-100
Reactivity:	Human
Host:	Rabbit
Isotype:	IgG
Clonality:	Polyclonal
Immunogen:	Synthetic peptide of human WDR36
Formulation:	pH7.4 PBS, 0.05% NaN ₃ , 40% Glycerol
Concentration:	lot specific
Purification:	Antigen affinity purification
Conjugation:	Unconjugated
Storage:	Store at -20°C as received.
Stability:	Stable for 12 months from date of receipt.
Predicted Protein Size:	105 kDa
Gene Name:	WD repeat domain 36
Database Link:	NP_644810 Entrez Gene 134430 Human Q8NI36

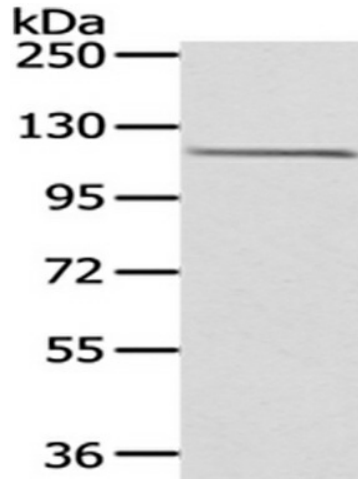
Background: This gene encodes a member of the WD repeat protein family. WD repeats are minimally conserved regions of approximately 40 amino acids typically bracketed by gly-his and trp-aspartate (GH-WD), which may facilitate formation of heterotrimeric or multiprotein complexes. Members of this family are involved in a variety of cellular processes, including cell cycle progression, signal transduction, apoptosis, and gene regulation. Mutations in this gene have been associated with adult-onset primary open-angle glaucoma (POAG).

Synonyms: GLC1G; TA-WDRP; TAWDRP; UTP21

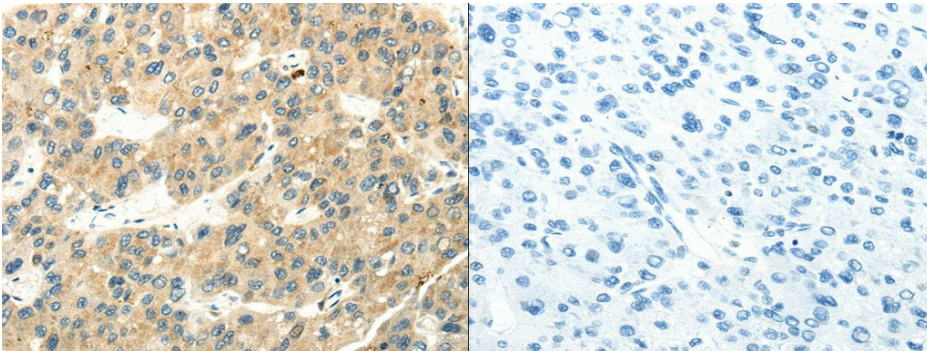


[View online »](#)

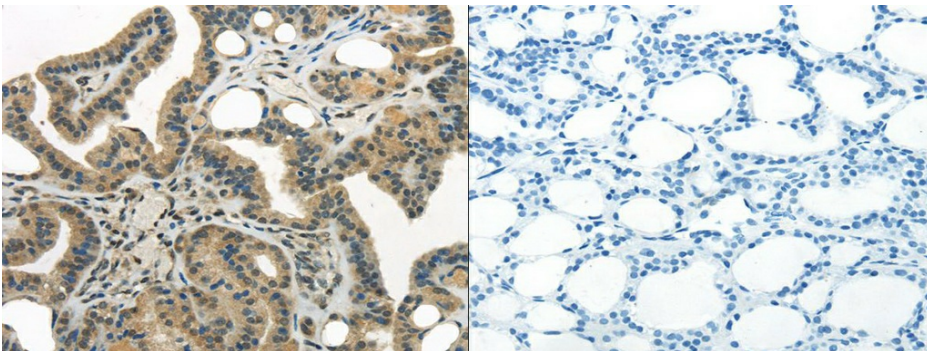
Product images:



Gel: 6%SDS-PAGE, Lysate: 40 ug, Primary antibody: (WDR36 Antibody) at dilution 1/200 dilution, Secondary antibody: Goat anti rabbit IgG at 1/8000 dilution, Exposure time: 1 minute



The image on the left is immunohistochemistry of paraffin-embedded Human liver cancer tissue using (WDR36 Antibody) at dilution 1/35, on the right is treated with synthetic peptide. (Original magnification: $\times 200$)



The image on the left is immunohistochemistry of paraffin-embedded Human thyroid cancer tissue using (WDR36 Antibody) at dilution 1/35, on the right is treated with synthetic peptide. (Original magnification: $\times 200$)