

Product datasheet for **TA351923**

WASF3 Rabbit Polyclonal Antibody

Product data:

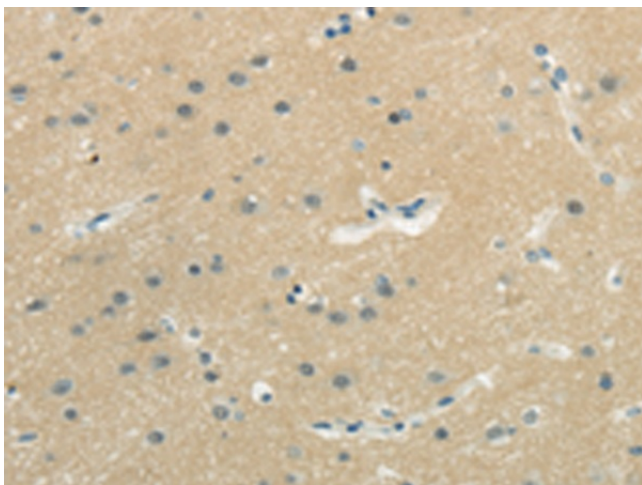
Product Type:	Primary Antibodies
Applications:	IHC
Recommended Dilution:	IHC: 20-100 Positive control: Human brain Predicted cell location: Cytoplasm
Reactivity:	Human, Mouse
Host:	Rabbit
Isotype:	IgG
Clonality:	Polyclonal
Immunogen:	Synthetic peptide of human WASF3
Formulation:	pH7.4 PBS, 0.05% NaN ₃ , 40% Glycerol
Concentration:	lot specific
Purification:	Antigen affinity purification
Conjugation:	Unconjugated
Storage:	Store at -20°C as received.
Stability:	Stable for 12 months from date of receipt.
Gene Name:	WAS protein family member 3
Database Link:	NP_006637 Entrez Gene 245880 Mouse Entrez Gene 10810 Human Q9UPY6
Background:	This gene encodes a member of the Wiskott-Aldrich syndrome protein family. The gene product is a protein that forms a multiprotein complex that links receptor kinases and actin. Binding to actin occurs through a C-terminal verprolin homology domain in all family members. The multiprotein complex serves to transduce signals that involve changes in cell shape, motility or function. A pseudogene of this gene have been defined on chromosome 6. Alternative splicing results in multiple transcript variants
Synonyms:	Brush-1; SCAR3; WAVE3
Protein Families:	Druggable Genome



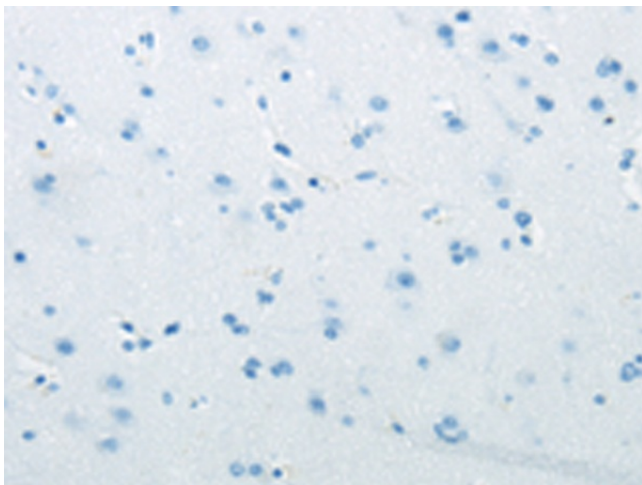
[View online »](#)

Protein Pathways: Adherens junction, Fc gamma R-mediated phagocytosis

Product images:



Immunohistochemistry of paraffin-embedded Human brain tissue using TA351923 (WASF3 Antibody) at dilution 1/25 (Original magnification: ×200)



Immunohistochemistry of paraffin-embedded Human brain tissue using TA351923 (WASF3 Antibody) at dilution 1/25, treated with synthetic peptide. (Original magnification: ×200)