

## Product datasheet for **TA351911**

### VAV2 Rabbit Polyclonal Antibody

#### Product data:

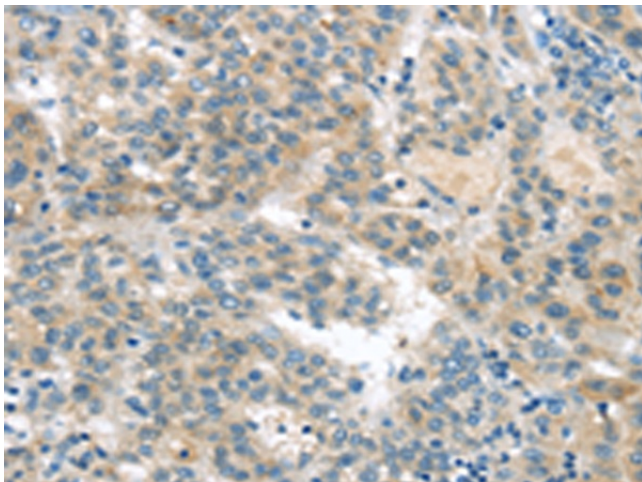
Product Type:	Primary Antibodies
Applications:	IHC
Recommended Dilution:	IHC: 10-50 Positive control: Human liver cancer Predicted cell location: Cytoplasm
Reactivity:	Human, Mouse
Host:	Rabbit
Isotype:	IgG
Clonality:	Polyclonal
Immunogen:	Synthetic peptide of human VAV2
Formulation:	pH7.4 PBS, 0.05% NaN <sub>3</sub> , 40% Glycerol
Concentration:	lot specific
Purification:	Antigen affinity purification
Conjugation:	Unconjugated
Storage:	Store at -20°C as received.
Stability:	Stable for 12 months from date of receipt.
Gene Name:	vav guanine nucleotide exchange factor 2
Database Link:	<a href="#">NP_003362</a> <a href="#">Entrez Gene 22325 Mouse</a> <a href="#">Entrez Gene 7410 Human</a> <a href="#">P52735</a>
Background:	VAV2 is the second member of the VAV guanine nucleotide exchange factor family of oncogenes. Unlike VAV1, which is expressed exclusively in hematopoietic cells, VAV2 transcripts were found in most tissues. Alternatively spliced transcript variants encoding different isoforms have been found for this gene.
Synonyms:	VAV-2
Protein Families:	Druggable Genome



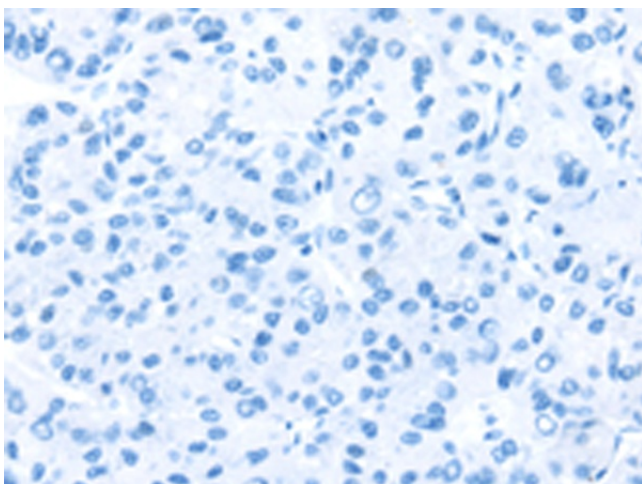
[View online »](#)

**Protein Pathways:**

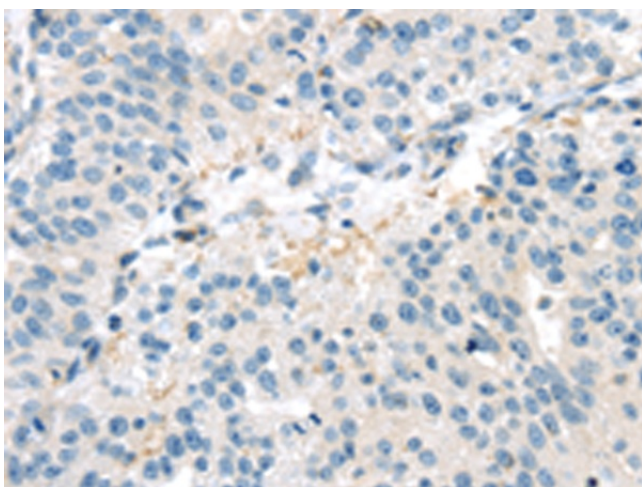
B cell receptor signaling pathway, Chemokine signaling pathway, Fc epsilon RI signaling pathway, Fc gamma R-mediated phagocytosis, Focal adhesion, Leukocyte transendothelial migration, Natural killer cell mediated cytotoxicity, Regulation of actin cytoskeleton, T cell receptor signaling pathway

**Product images:**

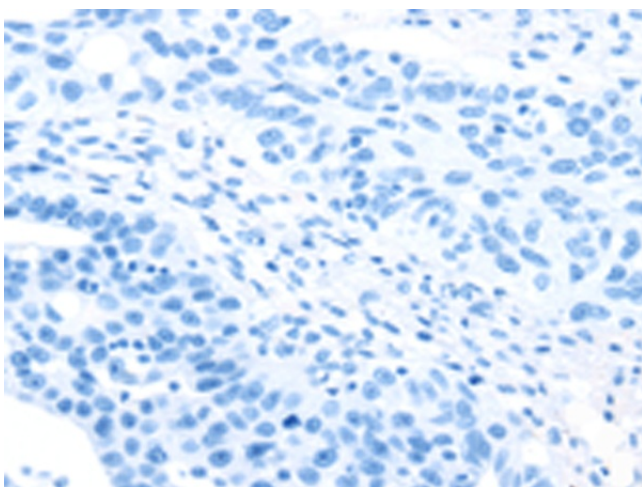
Immunohistochemistry of paraffin-embedded Human liver cancer tissue using TA351911 (VAV2 Antibody) at dilution 1/20 (Original magnification: ×200)



Immunohistochemistry of paraffin-embedded Human liver cancer tissue using TA351911 (VAV2 Antibody) at dilution 1/20, treated with synthetic peptide. (Original magnification: ×200)



Immunohistochemistry of paraffin-embedded Human breast cancer tissue using TA351911 (VAV2 Antibody) at dilution 1/20 (Original magnification:  $\times 200$ )



Immunohistochemistry of paraffin-embedded Human breast cancer tissue using TA351911 (VAV2 Antibody) at dilution 1/20, treated with synthetic peptide. (Original magnification:  $\times 200$ )