

## Product datasheet for **TA351907**

### UTS2D (UTS2B) Rabbit Polyclonal Antibody

#### Product data:

Product Type:	Primary Antibodies
Applications:	IHC, WB
Recommended Dilution:	WB: 500-2000 WB positive control: A431 cells and Human liver cancer tissue, Lovo and PC3 cells, Human placenta tissue and 293T cells IHC: 25-100 Positive control: Human liver cancer Predicted cell location: Cytoplasm
Reactivity:	Human
Host:	Rabbit
Isotype:	IgG
Clonality:	Polyclonal
Immunogen:	Synthetic peptide of human UTS2B
Formulation:	pH7.4 PBS, 0.05% NaN <sub>3</sub> , 40% Glycerol
Concentration:	lot specific
Purification:	Antigen affinity purification
Conjugation:	Unconjugated
Storage:	Store at -20°C as received.
Stability:	Stable for 12 months from date of receipt.
Predicted Protein Size:	14 kDa
Gene Name:	urotensin 2B
Database Link:	<a href="#">NP_937795</a> <a href="#">Entrez Gene 257313 Human</a> <a href="#">Q765I0</a>



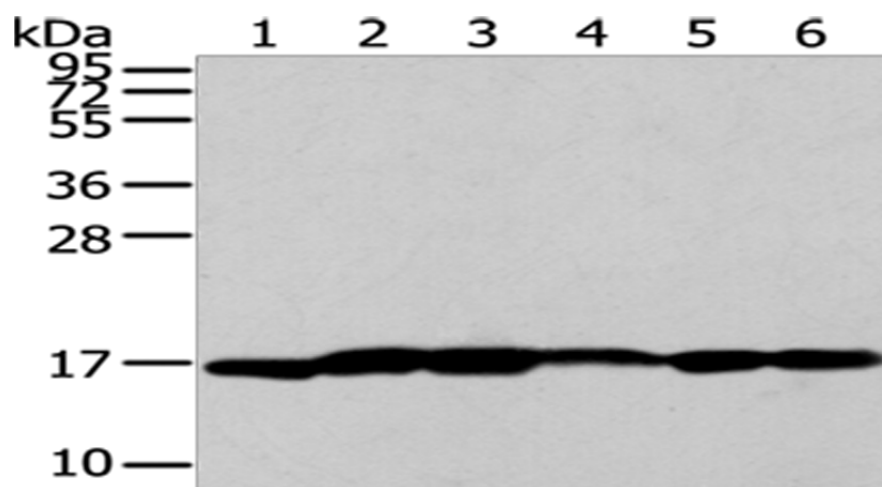
[View online »](#)

**Background:** Potent vasoconstrictor. Human Urotensin II is composed of only 11 amino acid residues, while fish and frog Urotensin II possess 12 and 13 amino acid residues, respectively (2). Human Urotensin II is found within both vascular and cardiac tissue, including coronary atheroma, and effectively constricts isolated arteries from nonhuman primates (3). Urotensin II may act as an autocrine and/or paracrine hormone rather than as a circulating hormone, by playing an important role in the development of ventricular hypertrophy induced by chronic hypoxia (4).

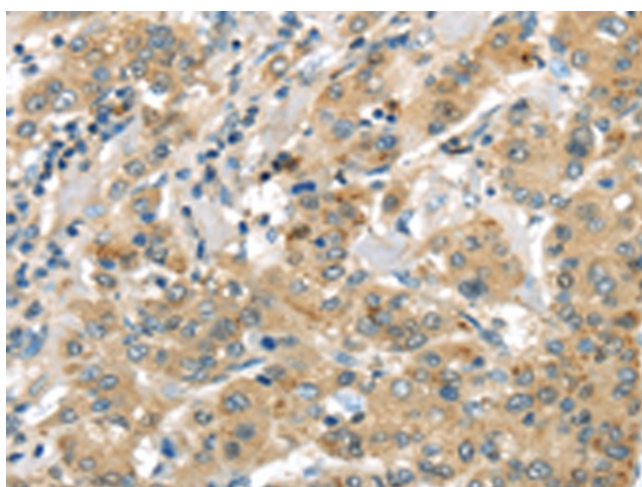
**Synonyms:** U2B; URP; UTS2D

**Protein Families:** Druggable Genome, Secreted Protein, Transmembrane

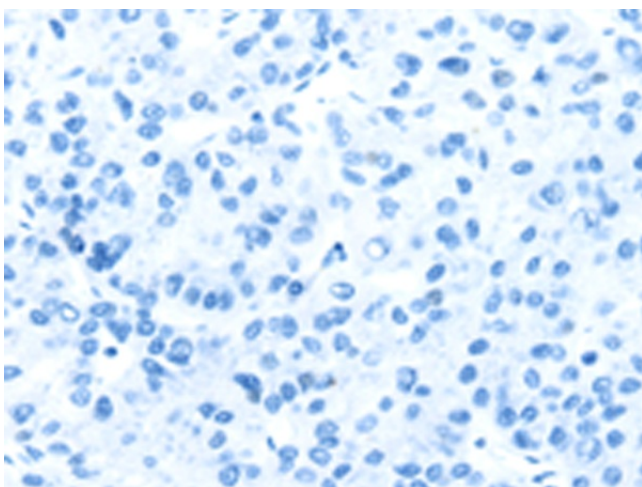
**Product images:**



Gel: 12%SDS-PAGE  
 Lysate: 40 µg  
 Lane 1-6: A431 cells  
 Human liver cancer tissue  
 Lovo cells  
 PC3 cells  
 Human placenta tissue  
 293T cells  
 Primary antibody: TA351907 (UTS2B Antibody) at dilution 1/200  
 Secondary antibody: Goat anti rabbit IgG at 1/8000 dilution  
 Exposure time: 30 seconds



Immunohistochemistry of paraffin-embedded Human liver cancer tissue using TA351907 (UTS2B Antibody) at dilution 1/35 (Original magnification: ×200)



Immunohistochemistry of paraffin-embedded Human liver cancer tissue using TA351907 (UTS2B Antibody) at dilution 1/35, treated with synthetic peptide. (Original magnification: ×200)