

Product datasheet for **TA351906**

USP28 Rabbit Polyclonal Antibody

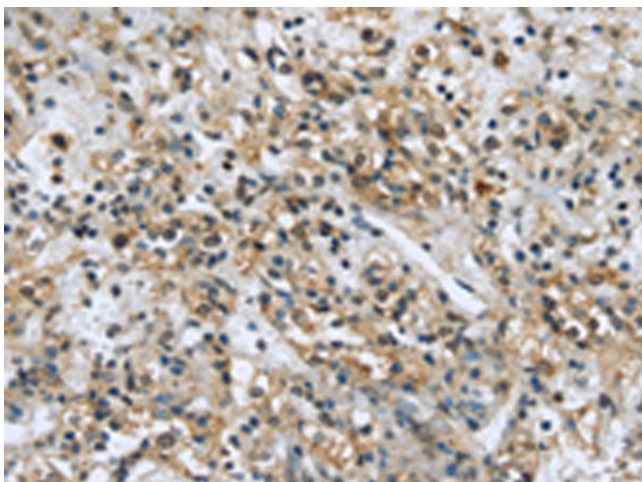
Product data:

Product Type:	Primary Antibodies
Applications:	IHC
Recommended Dilution:	IHC: 25-100 Positive control: Human prostate cancer Predicted cell location: Nucleus and Cytoplasm
Reactivity:	Human, Mouse, Rat
Host:	Rabbit
Isotype:	IgG
Clonality:	Polyclonal
Immunogen:	Synthetic peptide of human USP28
Formulation:	pH7.4 PBS, 0.05% NaN ₃ , 40% Glycerol
Concentration:	lot specific
Purification:	Antigen affinity purification
Conjugation:	Unconjugated
Storage:	Store at -20°C as received.
Stability:	Stable for 12 months from date of receipt.
Gene Name:	ubiquitin specific peptidase 28
Database Link:	NP_065937 Entrez Gene 235323 Mouse Entrez Gene 315639 Rat Entrez Gene 57646 Human Q96RU2
Background:	The ubiquitin-dependent protein degradation pathway is essential for proteolysis of intracellular proteins and peptides. Enzymes that remove ubiquitin from ubiquitin-conjugated peptides, like USP28, affect the fate and degradation of intracellular proteins and are essential for maintenance of cell-free ubiquitin pools (Valero et al., 2001).
Synonyms:	KIAA1515
Protein Families:	Protease

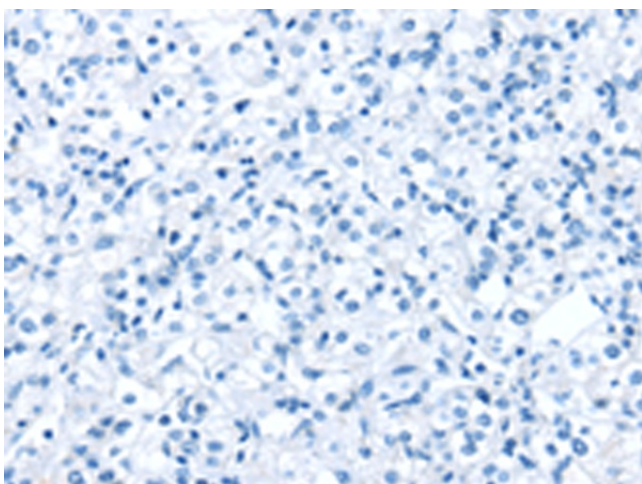


[View online »](#)

Product images:



Immunohistochemistry of paraffin-embedded Human prostate cancer tissue using TA351906 (USP28 Antibody) at dilution 1/35 (Original magnification: ×200)



Immunohistochemistry of paraffin-embedded Human prostate cancer tissue using TA351906 (USP28 Antibody) at dilution 1/35, treated with synthetic peptide. (Original magnification: ×200)