

## Product datasheet for **TA351901S**

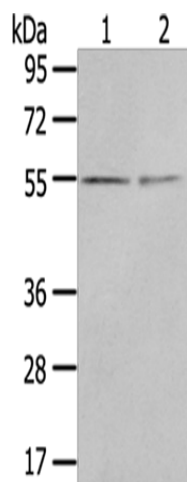
### CHRDL1 Rabbit Polyclonal Antibody

#### Product data:

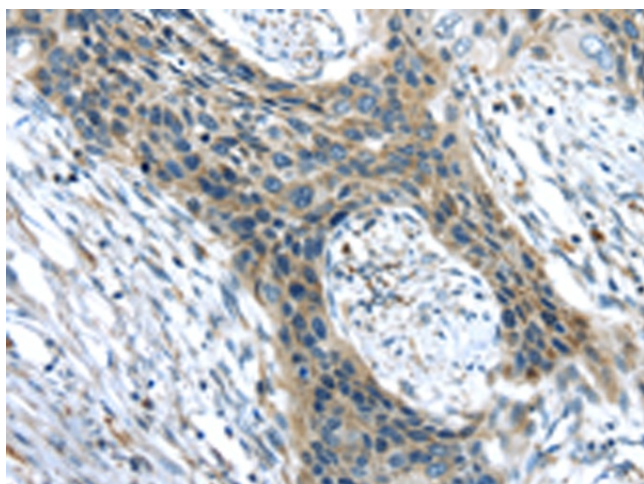
Product Type:	Primary Antibodies
Applications:	IHC, WB
Recommended Dilution:	WB: 200-1000 WB positive control: 293T cells and Human normal kidney tissue IHC: 25-100 Positive control: Human esophagus cancer Predicted cell location: Cytoplasm
Reactivity:	Human, Mouse, Rat
Host:	Rabbit
Isotype:	IgG
Clonality:	Polyclonal
Immunogen:	Synthetic peptide of human CHRDL1
Formulation:	pH7.4 PBS, 0.05% NaN <sub>3</sub> , 40% Glycerol
Purification:	Antigen affinity purification
Conjugation:	Unconjugated
Storage:	Store at -20°C as received.
Stability:	Stable for 12 months from date of receipt.
Predicted Protein Size:	51 kDa
Gene Name:	chordin-like 1
Database Link:	<a href="#">NP_660277</a> <a href="#">Entrez Gene 91851 Human</a> <a href="#">Q9BU40</a>
Background:	This gene encodes an antagonist of bone morphogenetic protein 4. The encoded protein may play a role in topographic retinotectal projection and in the regulation of retinal angiogenesis in response to hypoxia. Alternatively spliced transcript variants encoding different isoforms have been described.
Synonyms:	CHL; dA141H5.1; MGC1; MGCN; NRLN1; VOPT
Protein Families:	ES Cell Differentiation/IPS, Secreted Protein



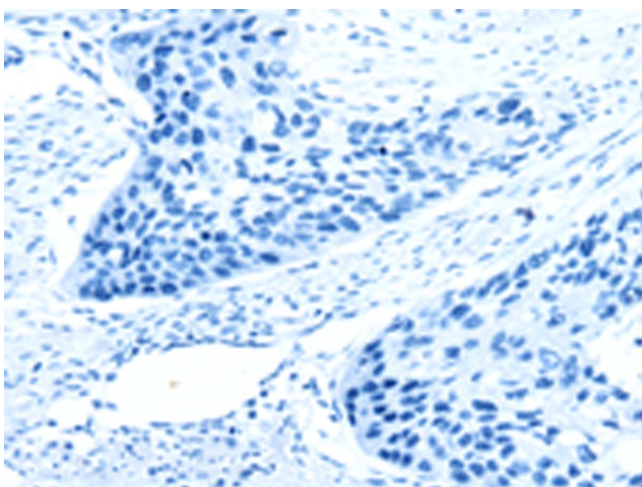
[View online »](#)

**Product images:**

Gel: 8%SDS-PAGE  
Lysate: 40  $\mu$ g  
Lane 1-2: 293T cells  
Human normal kidney tissue  
Primary antibody: [TA351901] (CHRDL1 Antibody)  
at dilution 1/400  
Secondary antibody: Goat anti rabbit IgG at  
1/8000 dilution  
Exposure time: 3 minutes



Immunohistochemistry of paraffin-embedded  
Human esophagus cancer tissue using  
[TA351901] (CHRDL1 Antibody) at dilution 1/35  
(Original magnification:  $\times$ 200)



Immunohistochemistry of paraffin-embedded Human esophagus cancer tissue using [TA351901] (CHRDL1 Antibody) at dilution 1/35, treated with synthetic peptide. (Original magnification:  $\times 200$ )