

Product datasheet for **TA351899**

Rab2 (RAB2A) Rabbit Polyclonal Antibody

Product data:

Product Type:	Primary Antibodies
Applications:	IHC, WB
Recommended Dilution:	WB: 500-2000 WB positive control: Hela, K562, 293T and hepg2 cell IHC: 30-150 Positive control: Human liver cancer Predicted cell location: Cytoplasm
Reactivity:	Human, Mouse, Rat
Host:	Rabbit
Isotype:	IgG
Clonality:	Polyclonal
Immunogen:	Synthetic peptide of human RAB2A
Formulation:	pH7.4 PBS, 0.05% NaN ₃ , 40% Glycerol
Concentration:	lot specific
Purification:	Antigen affinity purification
Conjugation:	Unconjugated
Storage:	Store at -20°C as received.
Stability:	Stable for 12 months from date of receipt.
Predicted Protein Size:	24 kDa
Gene Name:	RAB2A, member RAS oncogene family
Database Link:	NP_002856 Entrez Gene 59021 Mouse Entrez Gene 65158 Rat Entrez Gene 5862 Human P61019



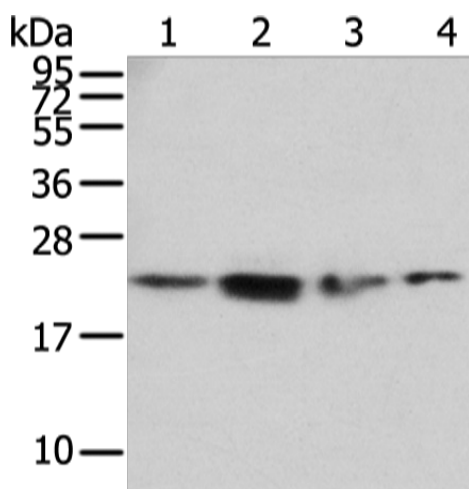
[View online »](#)

Background: The protein encoded by this gene belongs to the Rab family, members of which are small molecular weight guanosine triphosphatases (GTPases) that contain highly conserved domains involved in GTP binding and hydrolysis. The Rabs are membrane-bound proteins, involved in vesicular fusion and trafficking. This protein is a resident of pre-Golgi intermediates, and is required for protein transport from the endoplasmic reticulum (ER) to the Golgi complex.

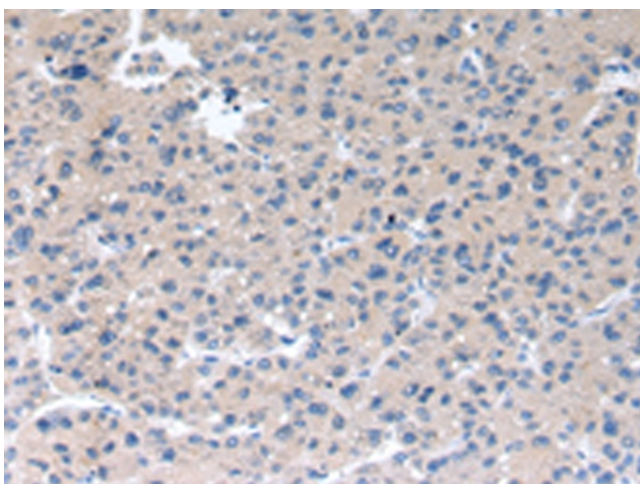
Synonyms: LHX; RAB2

Protein Families: Druggable Genome

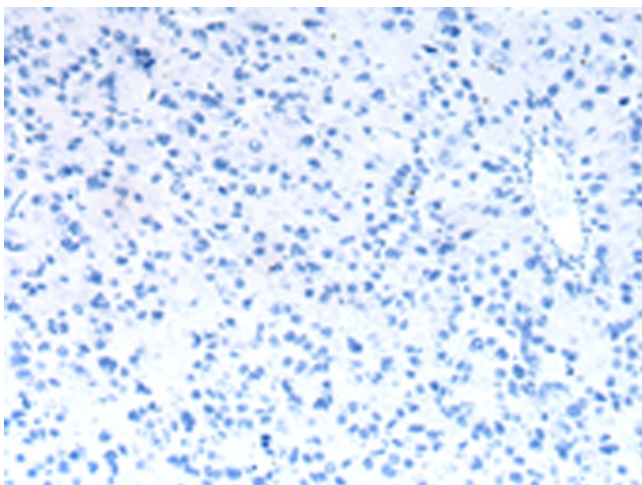
Product images:



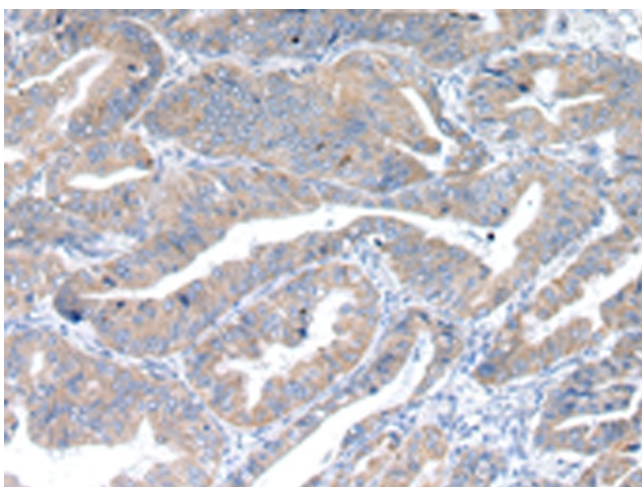
Gel: 12%SDS-PAGE
 Lysate: 40 µg
 Lane 1-4: HeLa
 K562
 293T and hepg2 cell
 Primary antibody: TA351899 (RAB2A Antibody) at dilution 1/450
 Secondary antibody: Goat anti rabbit IgG at 1/8000 dilution
 Exposure time: 2 minutes



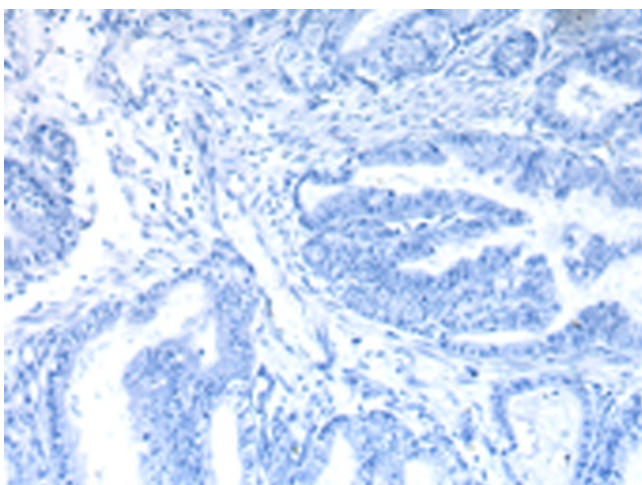
Immunohistochemistry of paraffin-embedded Human liver cancer tissue using TA351899 (RAB2A Antibody) at dilution 1/40 (Original magnification: ×200)



Immunohistochemistry of paraffin-embedded Human liver cancer tissue using TA351899 (RAB2A Antibody) at dilution 1/40, treated with synthetic peptide. (Original magnification: $\times 200$)



Immunohistochemistry of paraffin-embedded Human esophagus cancer tissue using TA351899 (RAB2A Antibody) at dilution 1/40 (Original magnification: $\times 200$)



Immunohistochemistry of paraffin-embedded Human esophagus cancer tissue using TA351899 (RAB2A Antibody) at dilution 1/40, treated with synthetic peptide. (Original magnification: $\times 200$)