

Product datasheet for **TA351896**

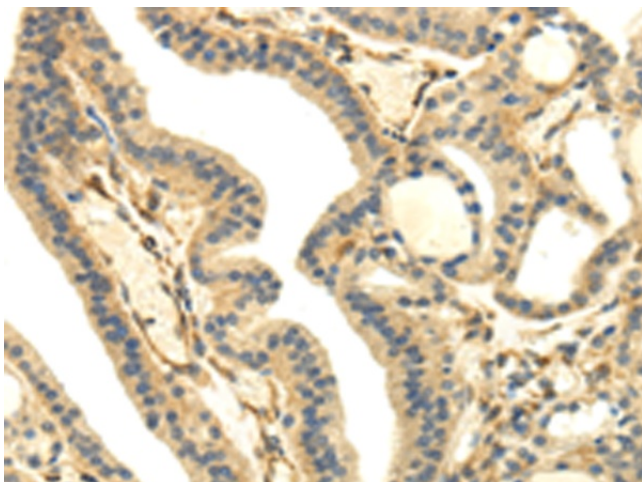
UHRF1BP1 Rabbit Polyclonal Antibody

Product data:

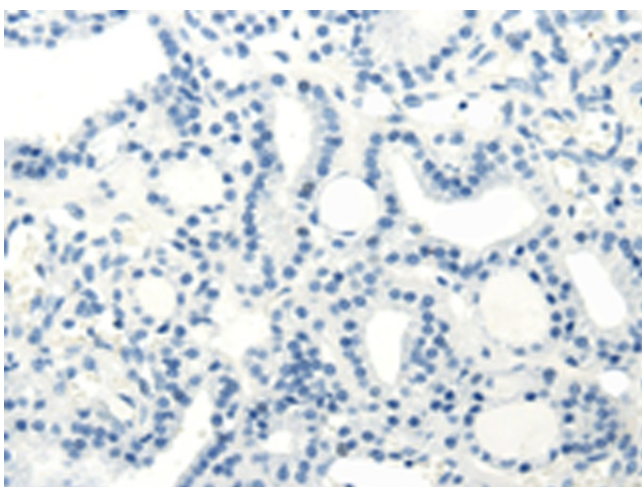
Product Type:	Primary Antibodies
Applications:	IHC
Recommended Dilution:	IHC: 25-100 Positive control: Human thyroid cancer Predicted cell location: Cytoplasm
Reactivity:	Human
Host:	Rabbit
Isotype:	IgG
Clonality:	Polyclonal
Immunogen:	Synthetic peptide of human UHRF1BP1
Formulation:	pH7.4 PBS, 0.05% NaN ₃ , 40% Glycerol
Concentration:	lot specific
Purification:	Antigen affinity purification
Conjugation:	Unconjugated
Storage:	Store at -20°C as received.
Stability:	Stable for 12 months from date of receipt.
Gene Name:	UHRF1 binding protein 1
Database Link:	NP_060224 Entrez Gene 54887 Human Q6BDS2
Background:	UHRF1BP1 (UHRF1 binding protein 1) is a 1,440 amino acid protein that interacts with UHRF1 and may act as a negative regulator of cell growth. The UHRF1BP1 protein has been identified as a possible risk loci for systemic lupus erythematosus. The UHRF1BP1 gene is conserved in chimpanzee, dog, cow, mouse, rat, chicken, zebrafish and C.elegans, and maps to human chromosome 6p21.31.
Synonyms:	C6orf107; dj349A12.1; ICBP90



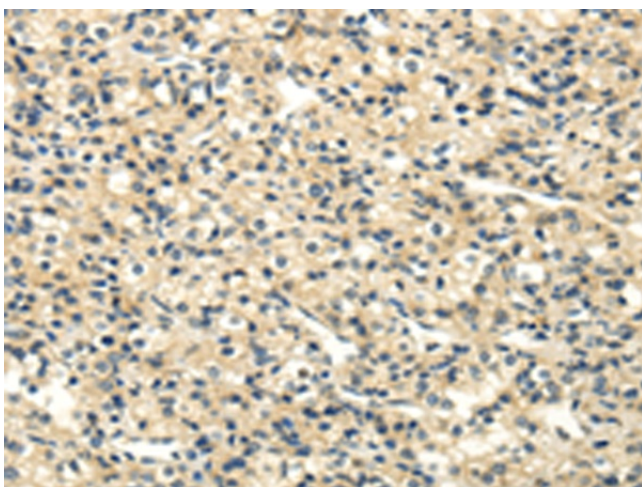
[View online »](#)

Product images:

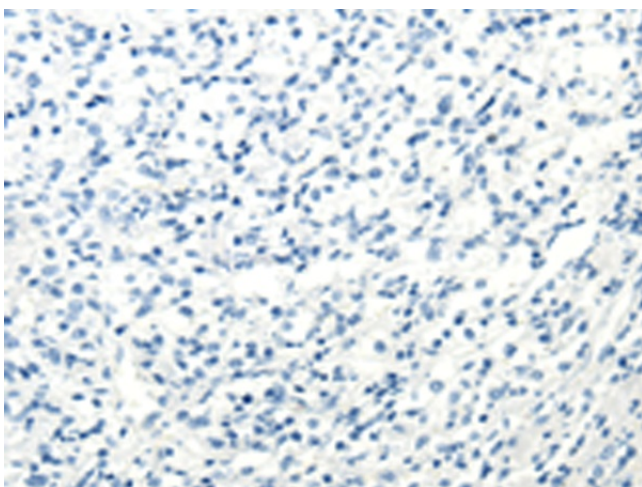
Immunohistochemistry of paraffin-embedded Human thyroid cancer tissue using TA351896 (UHRF1BP1 Antibody) at dilution 1/35 (Original magnification: $\times 200$)



Immunohistochemistry of paraffin-embedded Human thyroid cancer tissue using TA351896 (UHRF1BP1 Antibody) at dilution 1/35, treated with synthetic peptide. (Original magnification: $\times 200$)



Immunohistochemistry of paraffin-embedded Human prostate cancer tissue using TA351896 (UHRF1BP1 Antibody) at dilution 1/35 (Original magnification: $\times 200$)



Immunohistochemistry of paraffin-embedded Human prostate cancer tissue using TA351896 (UHRF1BP1 Antibody) at dilution 1/35, treated with synthetic peptide. (Original magnification: $\times 200$)