

## Product datasheet for **TA351889S**

### UCP1 Rabbit Polyclonal Antibody

#### Product data:

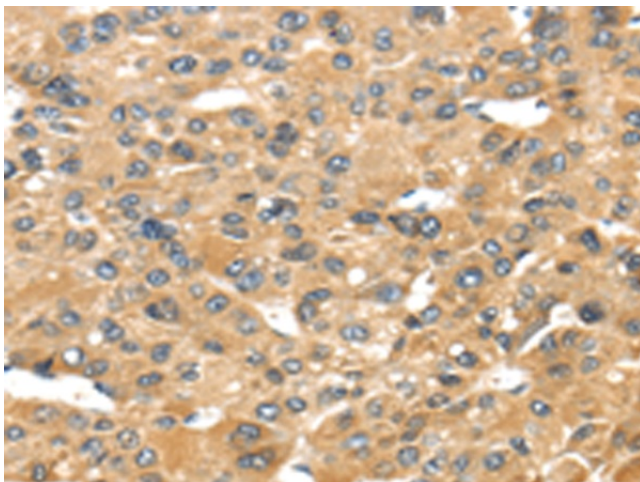
Product Type:	Primary Antibodies
Applications:	IHC
Recommended Dilution:	IHC: 30-150 Positive control: Human liver cancer Predicted cell location: Cytoplasm
Reactivity:	Human
Host:	Rabbit
Isotype:	IgG
Clonality:	Polyclonal
Immunogen:	Synthetic peptide of human UCP1
Formulation:	pH7.4 PBS, 0.05% NaN <sub>3</sub> , 40% Glycerol
Purification:	Antigen affinity purification
Conjugation:	Unconjugated
Storage:	Store at -20°C as received.
Stability:	Stable for 12 months from date of receipt.
Gene Name:	uncoupling protein 1
Database Link:	<a href="#">NP_068605</a> <a href="#">Entrez Gene 7350 Human</a> <a href="#">P25874</a>

**Background:** Mitochondrial uncoupling proteins (UCP) are members of the family of mitochondrial anion carrier proteins (MACP). UCPs separate oxidative phosphorylation from ATP synthesis with energy dissipated as heat, also referred to as the mitochondrial proton leak. UCPs facilitate the transfer of anions from the inner to the outer mitochondrial membrane and the return transfer of protons from the outer to the inner mitochondrial membrane. They also reduce the mitochondrial membrane potential in mammalian cells. Tissue specificity occurs for the different UCPs and the exact methods of how UCPs transfer H<sup>+</sup>/OH<sup>-</sup> are not known. UCPs contain the three homologous protein domains of MACPs. This gene is expressed only in brown adipose tissue, a specialized tissue which functions to produce heat.

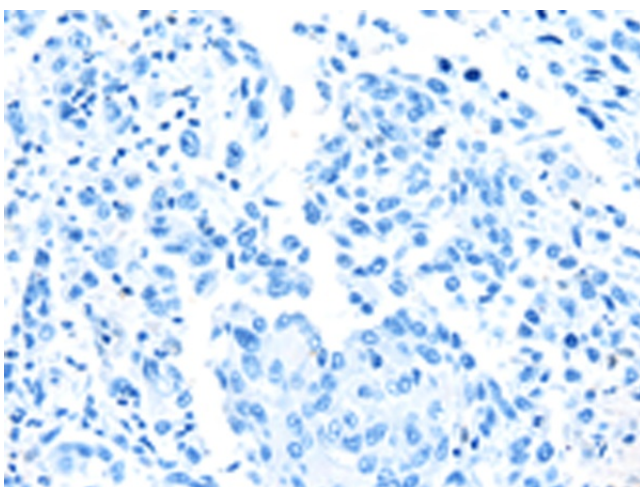


[View online »](#)

Synonyms: SLC25A7; UCP  
Protein Families: Druggable Genome  
Protein Pathways: Huntington's disease, PPAR signaling pathway

**Product images:**

Immunohistochemistry of paraffin-embedded Human liver cancer tissue using [TA351889] (UCP1 Antibody) at dilution 1/40 (Original magnification:  $\times 200$ )



Immunohistochemistry of paraffin-embedded Human liver cancer tissue using [TA351889] (UCP1 Antibody) at dilution 1/40, treated with synthetic peptide. (Original magnification:  $\times 200$ )