

Product datasheet for **TA351881S**

UAP56 (DDX39B) Rabbit Polyclonal Antibody

Product data:

Product Type:	Primary Antibodies
Applications:	IHC, WB
Recommended Dilution:	WB: 500-2000 WB positive control: A431, SKOV3, 231, Jurkat, HepG2 and Hela cells IHC: 30-150 Positive control: Human breast cancer Predicted cell location: Nucleus
Reactivity:	Human, Mouse, Rat
Host:	Rabbit
Isotype:	IgG
Clonality:	Polyclonal
Immunogen:	Synthetic peptide of human DDX39B
Formulation:	pH7.4 PBS, 0.05% NaN ₃ , 40% Glycerol
Purification:	Antigen affinity purification
Conjugation:	Unconjugated
Storage:	Store at -20°C as received.
Stability:	Stable for 12 months from date of receipt.
Predicted Protein Size:	49 kDa
Gene Name:	DEAD-box helicase 39B
Database Link:	NP_004631 Entrez Gene 53817 Mouse Entrez Gene 114612 Rat Entrez Gene 7919 Human Q13838

Background: This gene encodes a member of the DEAD box family of RNA-dependent ATPases that mediate ATP hydrolysis during pre-mRNA splicing. The encoded protein is an essential splicing factor required for association of U2 small nuclear ribonucleoprotein with pre-mRNA, and it also plays an important role in mRNA export from the nucleus to the cytoplasm. This gene belongs to a cluster of genes localized in the vicinity of the genes encoding tumor necrosis factor alpha and tumor necrosis factor beta.

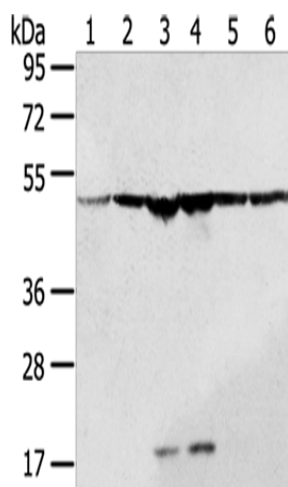


[View online »](#)

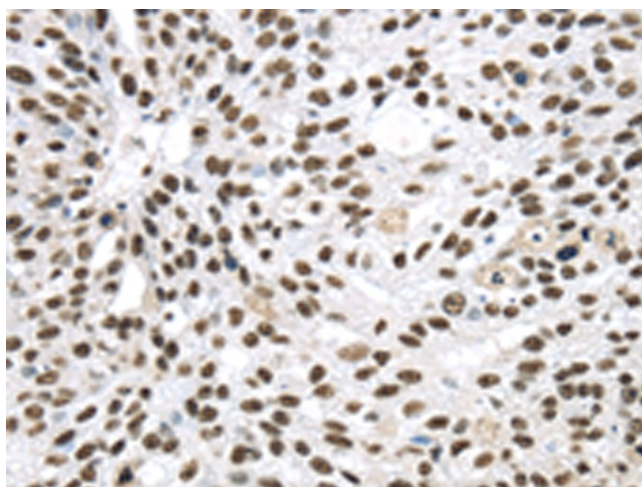
Synonyms: BAT1; D6S81E; UAP56

Protein Pathways: Spliceosome

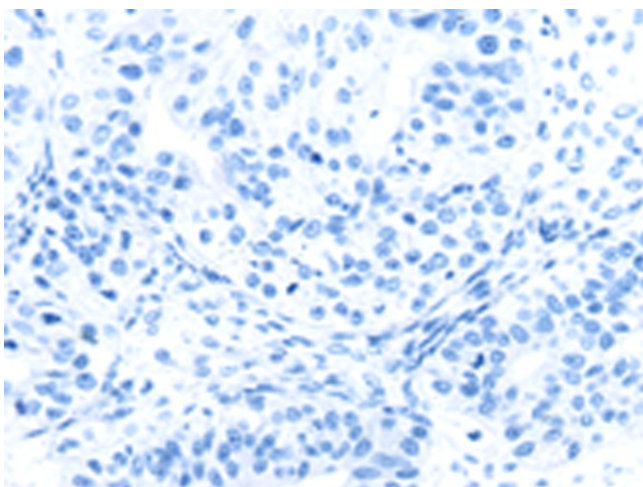
Product images:



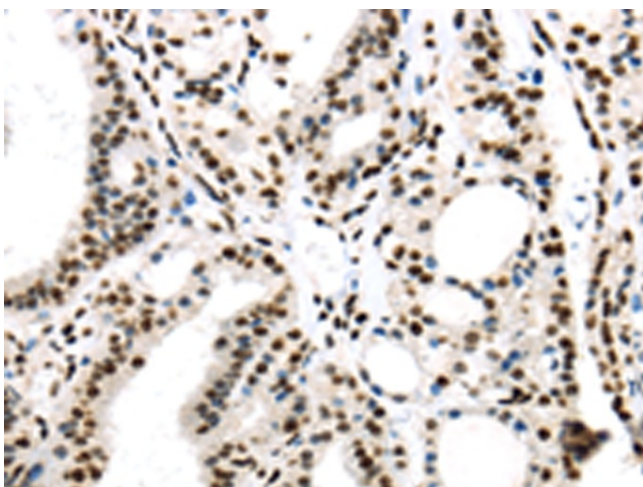
Gel: 8%SDS-PAGE
 Lysate: 40 µg
 Lane 1-6: A431 cells
 SKOV3 cells
 231 cells
 Jurkat cells
 HepG2 cells
 Hela cells
 Primary antibody: [TA351881] (DDX39B Antibody) at dilution 1/200
 Secondary antibody: Goat anti rabbit IgG at 1/8000 dilution
 Exposure time: 1 second



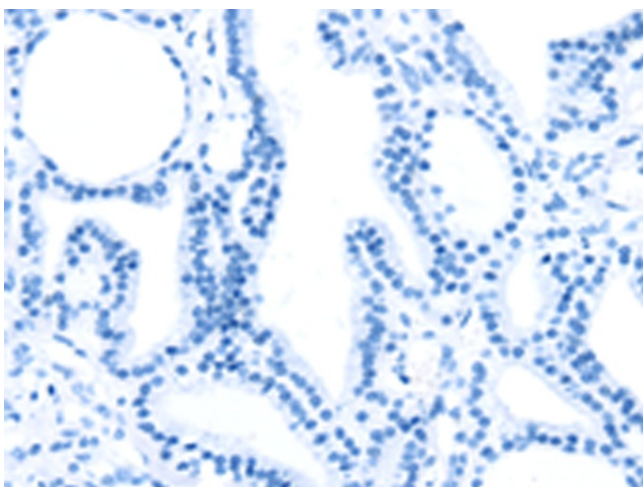
Immunohistochemistry of paraffin-embedded Human breast cancer tissue using [TA351881] (DDX39B Antibody) at dilution 1/40 (Original magnification: ×200)



Immunohistochemistry of paraffin-embedded Human breast cancer tissue using [TA351881] (DDX39B Antibody) at dilution 1/40, treated with synthetic peptide. (Original magnification: ×200)



Immunohistochemistry of paraffin-embedded Human thyroid cancer tissue using [TA351881] (DDX39B Antibody) at dilution 1/40 (Original magnification: ×200)



Immunohistochemistry of paraffin-embedded Human thyroid cancer tissue using [TA351881] (DDX39B Antibody) at dilution 1/40, treated with synthetic peptide. (Original magnification: ×200)