

Product datasheet for **TA351877**

TRARG1 Rabbit Polyclonal Antibody

Product data:

Product Type:	Primary Antibodies
Applications:	IHC, WB
Recommended Dilution:	WB: 500-2000 WB positive control: Lovo and 231 cells IHC: 30-150 Positive control: Human liver cancer Predicted cell location: Cytoplasm and Nucleus
Reactivity:	Human, Mouse, Rat
Host:	Rabbit
Isotype:	IgG
Clonality:	Polyclonal
Immunogen:	Synthetic peptide of human TUSC5
Formulation:	pH7.4 PBS, 0.05% NaN ₃ , 40% Glycerol
Concentration:	lot specific
Purification:	Antigen affinity purification
Conjugation:	Unconjugated
Storage:	Store at -20°C as received.
Stability:	Stable for 12 months from date of receipt.
Predicted Protein Size:	19 kDa
Gene Name:	tumor suppressor candidate 5
Database Link:	NP_758955 Entrez Gene 286753 Human Q8IXB3



[View online »](#)

Background:

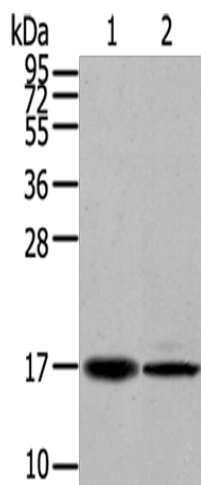
TUSC5 (tumor suppressor candidate 5), also known as protein located at seventeen-p-thirteen point three 1, LOST1 or IFITMD3 (interferon-induced transmembrane domain-containing protein D3), is a 177 amino acid multi-pass membrane protein that belongs to the CD225 family. Thought to play a role in fat metabolism, TUSC5 is highly expressed in mammary gland, heart, smooth muscle, skeletal muscle and stomach, with lower levels found in lung and brain.

Synonyms:

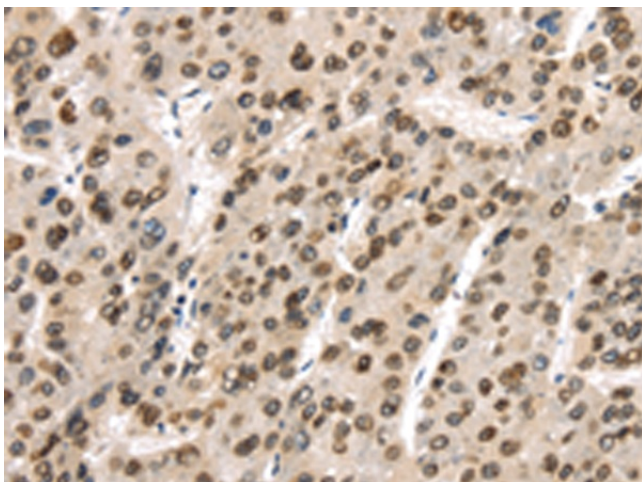
DSPB1; IFITMD3; LOST1

Protein Families:

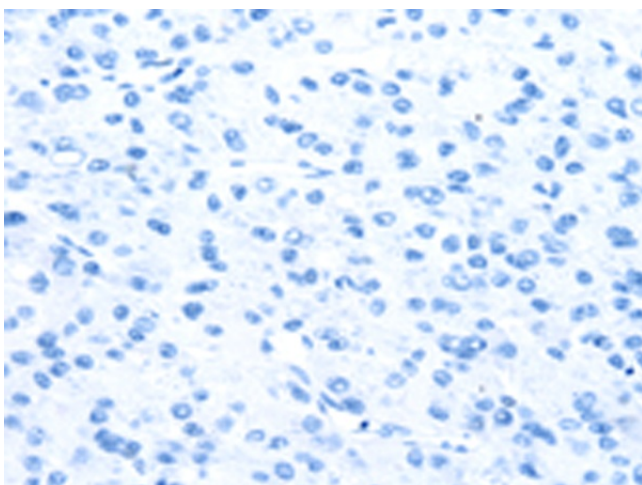
Transmembrane

Product images:

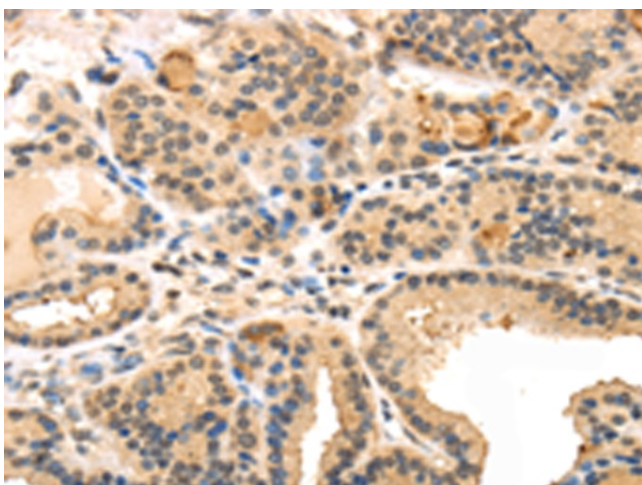
Gel: 12%SDS-PAGE
Lysate: 40 µg
Lane 1-2: Lovo cells
231 cells
Primary antibody: TA351877 (TRARG1 Antibody)
at dilution 1/200
Secondary antibody: Goat anti rabbit IgG at
1/8000 dilution
Exposure time: 40 seconds



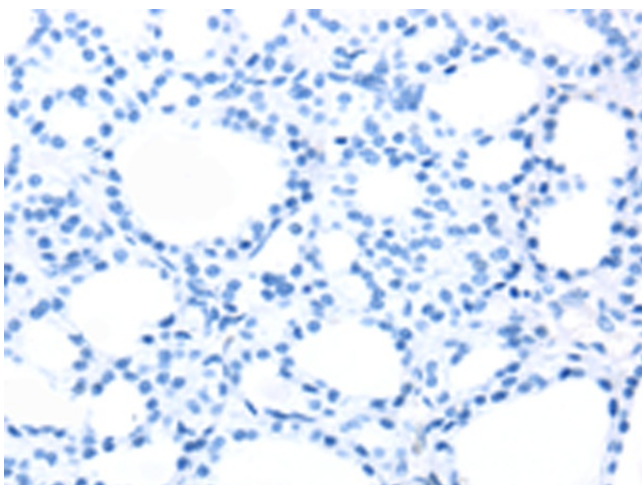
Immunohistochemistry of paraffin-embedded
Human liver cancer tissue using TA351877
(TRARG1 Antibody) at dilution 1/40 (Original
magnification: x200)



Immunohistochemistry of paraffin-embedded Human liver cancer tissue using TA351877 (TRARG1 Antibody) at dilution 1/40, treated with synthetic peptide. (Original magnification: ×200)



Immunohistochemistry of paraffin-embedded Human thyroid cancer tissue using TA351877 (TRARG1 Antibody) at dilution 1/40 (Original magnification: ×200)



Immunohistochemistry of paraffin-embedded Human thyroid cancer tissue using TA351877 (TRARG1 Antibody) at dilution 1/40, treated with synthetic peptide. (Original magnification: ×200)