

Product datasheet for **TA351876**

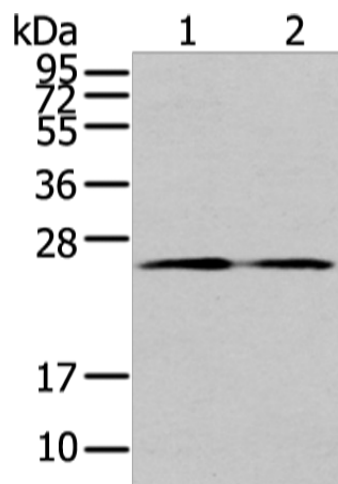
TUSC1 Rabbit Polyclonal Antibody

Product data:

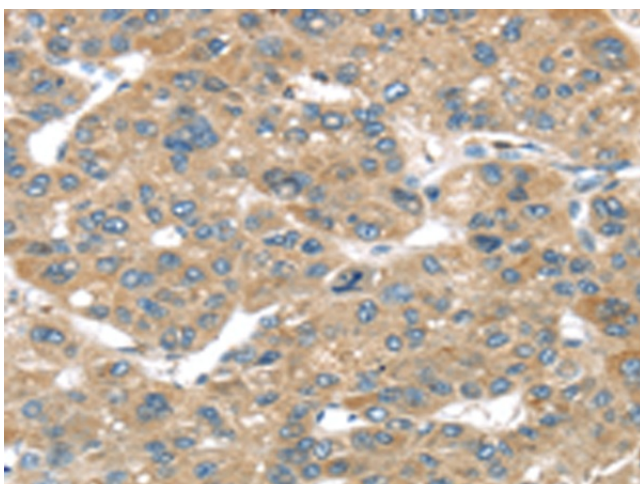
Product Type:	Primary Antibodies
Applications:	IHC, WB
Recommended Dilution:	WB: 200-1000 WB positive control: PC3 cell and human colon cancer tissue IHC: 30-150 Positive control: Human liver cancer Predicted cell location: Cytoplasm
Reactivity:	Human
Host:	Rabbit
Isotype:	IgG
Clonality:	Polyclonal
Immunogen:	Synthetic peptide of human TUSC1
Formulation:	pH7.4 PBS, 0.05% NaN ₃ , 40% Glycerol
Concentration:	lot specific
Purification:	Antigen affinity purification
Conjugation:	Unconjugated
Storage:	Store at -20°C as received.
Stability:	Stable for 12 months from date of receipt.
Predicted Protein Size:	23 kDa
Gene Name:	tumor suppressor candidate 1
Database Link:	NP_001004125 Entrez Gene 286319 Human Q2TAM9
Background:	This gene is located within the region of chromosome 9p that harbors tumor suppressor genes critical in carcinogenesis. It is an intronless gene which is downregulated in non-small-cell lung cancer and small-cell lung cancer cell lines, suggesting that it may play a role in lung tumorigenesis.
Synonyms:	TSG-9; TSG9



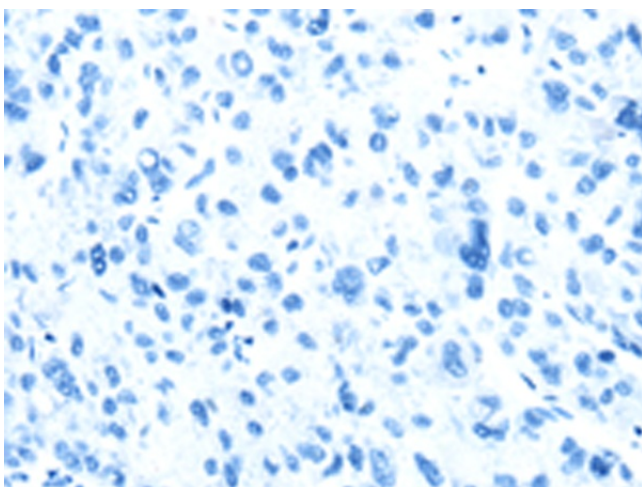
[View online »](#)

Product images:


Gel: 12%SDS-PAGE
 Lysate: 40 µg
 Lane 1-2: PC3 cell and human colon cancer tissue
 Primary antibody: TA351876 (TUSC1 Antibody) at dilution 1/200
 Secondary antibody: Goat anti rabbit IgG at 1/8000 dilution
 Exposure time: 1 minute



Immunohistochemistry of paraffin-embedded Human liver cancer tissue using TA351876 (TUSC1 Antibody) at dilution 1/45 (Original magnification: ×200)



Immunohistochemistry of paraffin-embedded Human liver cancer tissue using TA351876 (TUSC1 Antibody) at dilution 1/45, treated with synthetic peptide. (Original magnification: ×200)