

Product datasheet for **TA351875**

Tuberin (TSC2) Rabbit Polyclonal Antibody

Product data:

Product Type:	Primary Antibodies
Applications:	IHC, WB
Recommended Dilution:	WB: 200-1000 WB positive control: A172 cells IHC: 10-50 Positive control: Human esophagus cancer Predicted cell location: Cytoplasm
Reactivity:	Human, Mouse, Rat
Host:	Rabbit
Isotype:	IgG
Clonality:	Polyclonal
Immunogen:	Synthetic peptide of human TSC2
Formulation:	pH7.4 PBS, 0.05% NaN ₃ , 40% Glycerol
Concentration:	lot specific
Purification:	Antigen affinity purification
Conjugation:	Unconjugated
Storage:	Store at -20°C as received.
Stability:	Stable for 12 months from date of receipt.
Predicted Protein Size:	201 kDa
Gene Name:	tuberous sclerosis 2
Database Link:	NP_001070651 Entrez Gene 22084 Mouse Entrez Gene 24855 Rat Entrez Gene 7249 Human P49815
Background:	Mutations in this gene lead to tuberous sclerosis complex. Its gene product is believed to be a tumor suppressor and is able to stimulate specific GTPases. The protein associates with hamartin in a cytosolic complex, possibly acting as a chaperone for hamartin. Alternative splicing results in multiple transcript variants encoding different isoforms.
Synonyms:	LAM; PPP1R160; TSC4

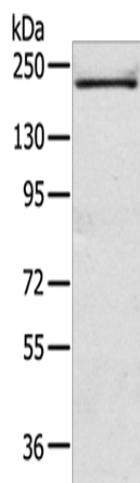


[View online »](#)

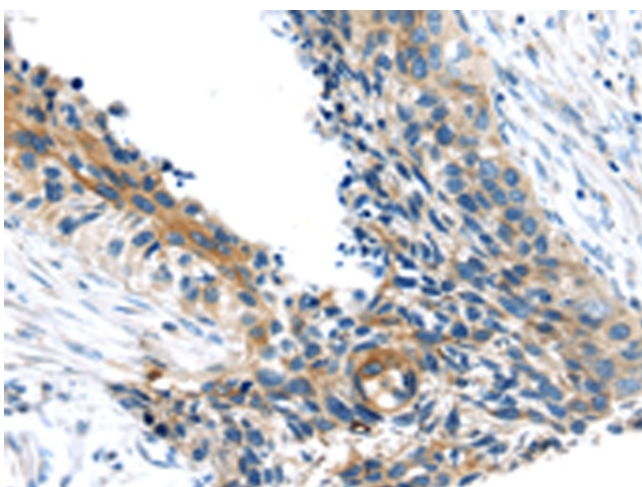
Protein Families: Druggable Genome

Protein Pathways: Insulin signaling pathway, mTOR signaling pathway, p53 signaling pathway

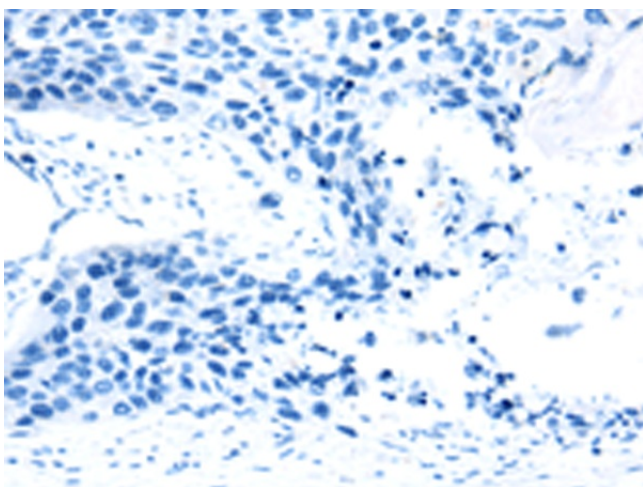
Product images:



Gel: 6%SDS-PAGE
Lysate: 40 μ g
Lane: A172 cells
Primary antibody: TA351875 (TSC2 Antibody) at dilution 1/200
Secondary antibody: Goat anti rabbit IgG at 1/8000 dilution
Exposure time: 5 minutes



Immunohistochemistry of paraffin-embedded Human esophagus cancer tissue using TA351875 (TSC2 Antibody) at dilution 1/20 (Original magnification: \times 200)



Immunohistochemistry of paraffin-embedded Human esophagus cancer tissue using TA351875 (TSC2 Antibody) at dilution 1/20, treated with synthetic peptide. (Original magnification: $\times 200$)