

Product datasheet for **TA351867**

TSPYL6 Rabbit Polyclonal Antibody

Product data:

| | |
|-----------------------|--|
| Product Type: | Primary Antibodies |
| Applications: | IHC |
| Recommended Dilution: | IHC: 25-100 Positive control: Human ovarian cancer Predicted cell location: Cytoplasm |
| Reactivity: | Human |
| Host: | Rabbit |
| Isotype: | IgG |
| Clonality: | Polyclonal |
| Immunogen: | Synthetic peptide of human TSPYL6 |
| Formulation: | pH7.4 PBS, 0.05% NaN ₃ , 40% Glycerol |
| Concentration: | lot specific |
| Purification: | Antigen affinity purification |
| Conjugation: | Unconjugated |
| Storage: | Store at -20°C as received. |
| Stability: | Stable for 12 months from date of receipt. |
| Gene Name: | TSPY-like 6 |
| Database Link: | NP_001003937 Entrez Gene 388951 Human Q8N831 |

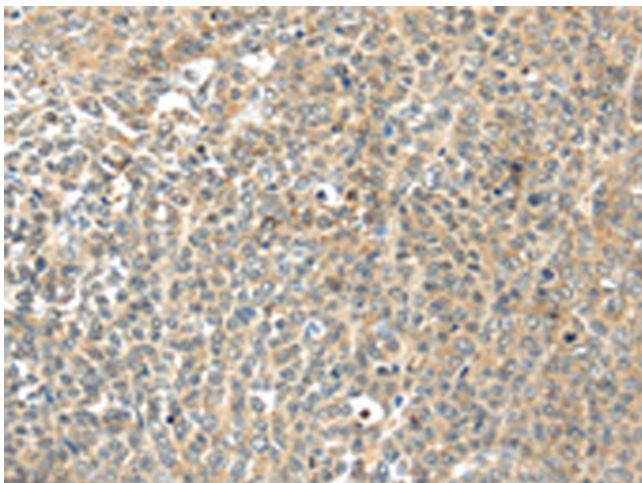
Background: TSPYL6 (Testis-specific Y-encoded-like protein 6) is a 410 amino acid member of the nucleosome assembly protein (NAP) family. TSPYL6 is believed to be similar to Testis-specific Y-encoded protein 1 in form and function. The gene that encodes TSPYL6 is found on chromosome 2 which consists of 237 million bases encoding over 1,400 genes and making up approximately 8% of the human genome. A number of genetic diseases are linked to genes on chromosome 2. The lipid metabolic disorder sitosterolemia is associated with ABCG5 and ABCG8. An extremely rare recessive genetic disorder, Alström syndrome is due to mutations in the ALMS1 gene.



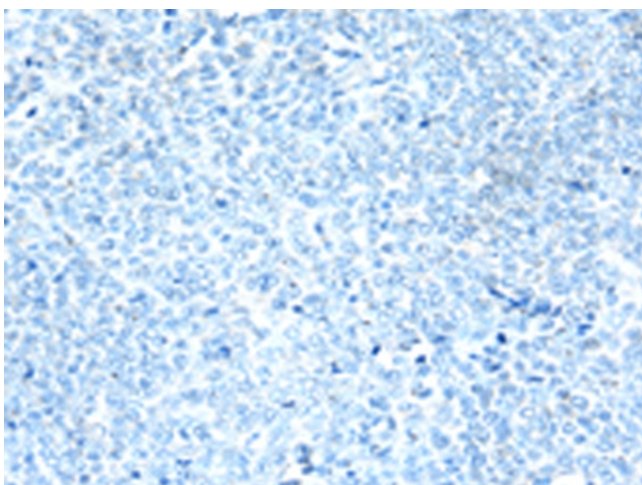
[View online »](#)

Synonyms: DKFZp434B125

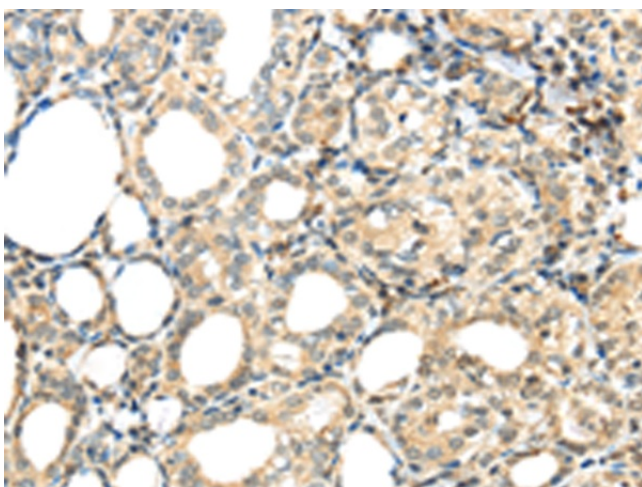
Product images:



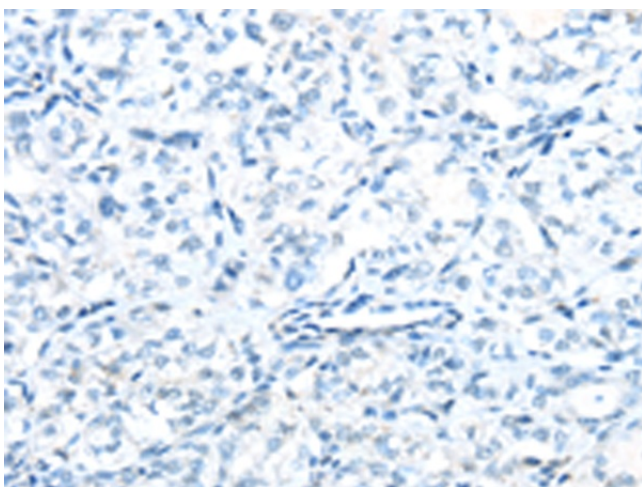
Immunohistochemistry of paraffin-embedded Human ovarian cancer tissue using TA351867 (TSPYL6 Antibody) at dilution 1/20 (Original magnification: $\times 200$)



Immunohistochemistry of paraffin-embedded Human ovarian cancer tissue using TA351867 (TSPYL6 Antibody) at dilution 1/20, treated with synthetic peptide. (Original magnification: $\times 200$)



Immunohistochemistry of paraffin-embedded Human thyroid cancer tissue using TA351867 (TSPYL6 Antibody) at dilution 1/20 (Original magnification: $\times 200$)



Immunohistochemistry of paraffin-embedded Human thyroid cancer tissue using TA351867 (TSPYL6 Antibody) at dilution 1/20, treated with synthetic peptide. (Original magnification: $\times 200$)