

Product datasheet for **TA351866S**

TSPYL1 Rabbit Polyclonal Antibody

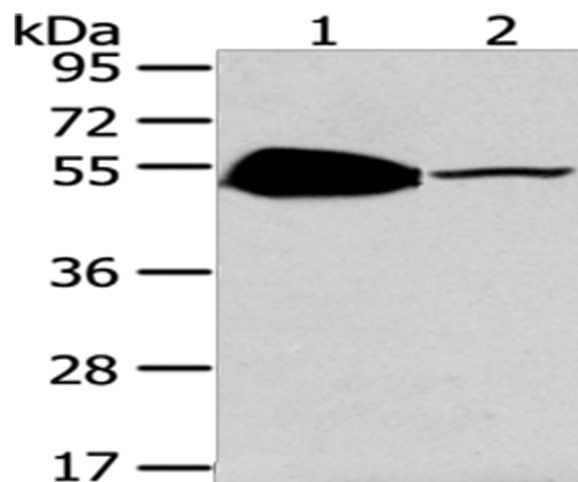
Product data:

Product Type:	Primary Antibodies
Applications:	WB
Recommended Dilution:	WB: 500-2000 WB positive control: Mouse brain and heart tissue
Reactivity:	Human, Mouse
Host:	Rabbit
Isotype:	IgG
Clonality:	Polyclonal
Immunogen:	Synthetic peptide of human TSPYL1
Formulation:	pH7.4 PBS, 0.05% NaN ₃ , 40% Glycerol
Purification:	Antigen affinity purification
Conjugation:	Unconjugated
Storage:	Store at -20°C as received.
Stability:	Stable for 12 months from date of receipt.
Predicted Protein Size:	49 kDa
Gene Name:	TSPY-like 1
Database Link:	NP_003300 Entrez Gene 7259 Human Q9H0U9
Background:	The protein encoded by this gene is found in the nucleolus and is similar to that of a family of genes on the Y-chromosome. This gene is intronless. Defects in this gene are a cause of sudden infant death with dysgenesis of the testes syndrome (SIDDT).
Synonyms:	TSPYL



[View online »](#)

Product images:



Gel: 8%SDS-PAGE

Lysate: 40 μ g

Lane 1-2: Mouse brain tissue

Mouse heart tissue

Primary antibody: [TA351866] (TSPYL1 Antibody)
at dilution 1/200

Secondary antibody: Goat anti rabbit IgG at
1/8000 dilution

Exposure time: 2 minutes