

## Product datasheet for **TA351860**

### TRPM6 Rabbit Polyclonal Antibody

#### Product data:

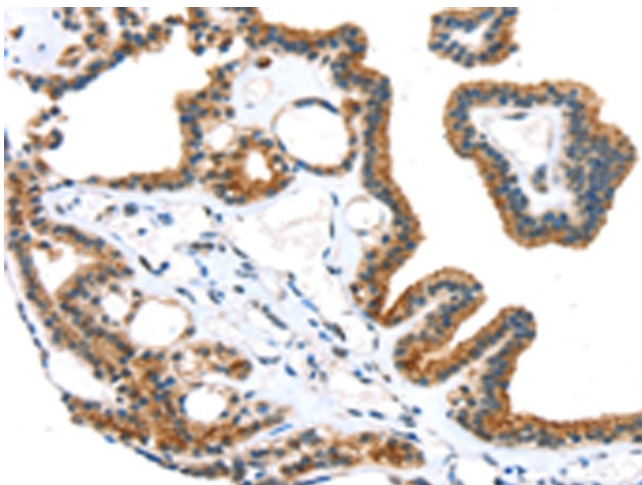
Product Type:	Primary Antibodies
Applications:	IHC
Recommended Dilution:	IHC: 20-100 Positive control: Human thyroid cancer Predicted cell location: Cytoplasm
Reactivity:	Human
Host:	Rabbit
Isotype:	IgG
Clonality:	Polyclonal
Immunogen:	Synthetic peptide of human TRPM6
Formulation:	pH7.4 PBS, 0.05% NaN <sub>3</sub> , 40% Glycerol
Concentration:	lot specific
Purification:	Antigen affinity purification
Conjugation:	Unconjugated
Storage:	Store at -20°C as received.
Stability:	Stable for 12 months from date of receipt.
Gene Name:	transient receptor potential cation channel subfamily M member 6
Database Link:	<a href="#">NP_060132</a> <a href="#">Entrez Gene 140803 Human</a> <a href="#">Q9BX84</a>
Background:	This gene is predominantly expressed in the kidney and colon, and encodes a protein containing an ion channel domain and a protein kinase domain. It is crucial for magnesium homeostasis, and plays an essential role in epithelial magnesium transport and in the active magnesium absorption in the gut and kidney. Mutations in this gene are associated with hypomagnesemia with secondary hypocalcemia. Alternatively spliced transcript variants encoding different isoforms have been noted for this gene.
Synonyms:	CHAK2; HMGX; HOMG; HOMG1; HSH



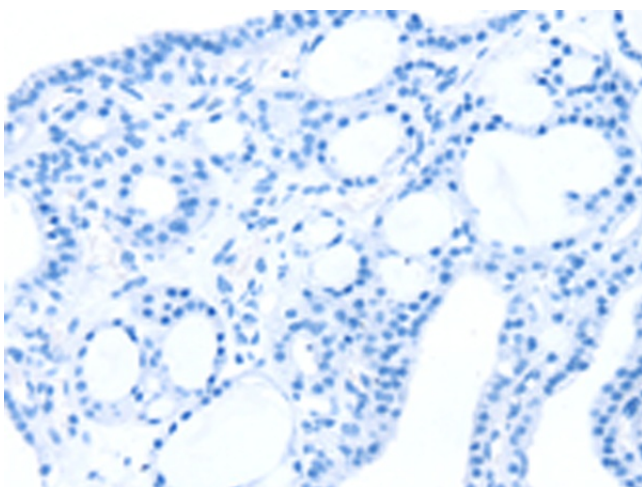
[View online »](#)

Protein Families: Druggable Genome, Ion Channels: Transient receptor potential, Protein Kinase, Transmembrane

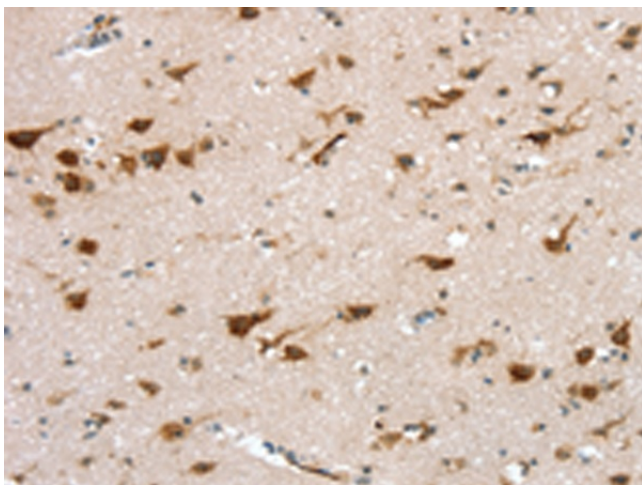
### Product images:



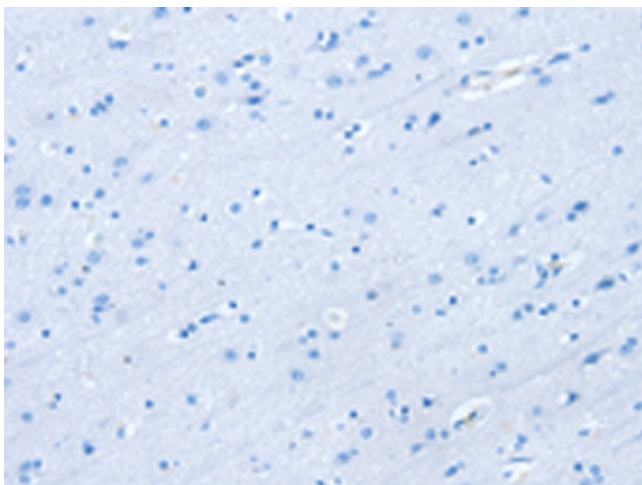
Immunohistochemistry of paraffin-embedded Human thyroid cancer tissue using TA351860 (TRPM6 Antibody) at dilution 1/20 (Original magnification:  $\times 200$ )



Immunohistochemistry of paraffin-embedded Human thyroid cancer tissue using TA351860 (TRPM6 Antibody) at dilution 1/20, treated with synthetic peptide. (Original magnification:  $\times 200$ )



Immunohistochemistry of paraffin-embedded Human brain tissue using TA351860 (TRPM6 Antibody) at dilution 1/20 (Original magnification: ×200)



Immunohistochemistry of paraffin-embedded Human brain tissue using TA351860 (TRPM6 Antibody) at dilution 1/20, treated with synthetic peptide. (Original magnification: ×200)