

Product datasheet for **TA351859**

TRPM6 Rabbit Polyclonal Antibody

Product data:

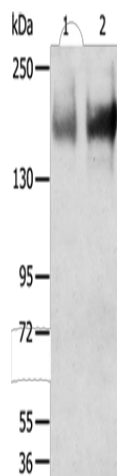
Product Type:	Primary Antibodies
Applications:	WB
Recommended Dilution:	WB: 200-1000 WB positive control: Human jejunioileum and ileum tissue
Reactivity:	Human
Host:	Rabbit
Isotype:	IgG
Clonality:	Polyclonal
Immunogen:	Synthetic peptide of human TRPM6
Formulation:	pH7.4 PBS, 0.05% NaN ₃ , 40% Glycerol
Concentration:	lot specific
Purification:	Antigen affinity purification
Conjugation:	Unconjugated
Storage:	Store at -20°C as received.
Stability:	Stable for 12 months from date of receipt.
Predicted Protein Size:	232 kDa
Gene Name:	transient receptor potential cation channel subfamily M member 6
Database Link:	NP_060132 Entrez Gene 140803 Human Q9BX84
Background:	This gene is predominantly expressed in the kidney and colon, and encodes a protein containing an ion channel domain and a protein kinase domain. It is crucial for magnesium homeostasis, and plays an essential role in epithelial magnesium transport and in the active magnesium absorption in the gut and kidney. Mutations in this gene are associated with hypomagnesemia with secondary hypocalcemia. Alternatively spliced transcript variants encoding different isoforms have been noted for this gene.
Synonyms:	CHAK2; HMGX; HOMG; HOMG1; HSH



[View online »](#)

Protein Families: Druggable Genome, Ion Channels: Transient receptor potential, Protein Kinase, Transmembrane

Product images:



Gel: 6%SDS-PAGE

Lysate: 40 µg

Lane 1-2: Human jejunum tissue

Human ileum tissue

Primary antibody: TA351859 (TRPM6 Antibody) at dilution 1/200

Secondary antibody: Goat anti rabbit IgG at 1/8000 dilution

Exposure time: 5 minutes