

## Product datasheet for **TA351858**

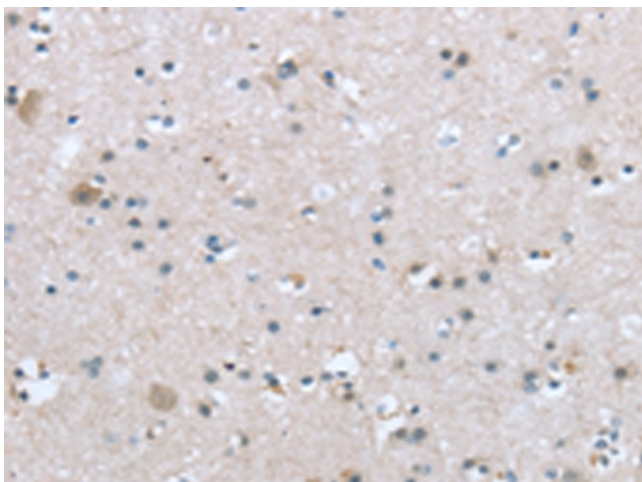
### TRPM3 Rabbit Polyclonal Antibody

#### Product data:

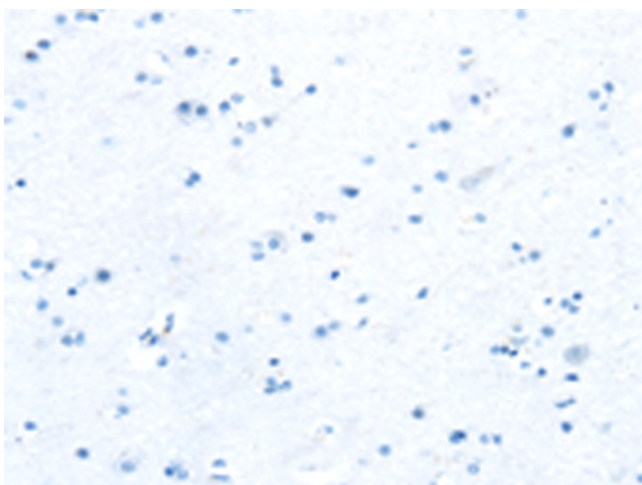
Product Type:	Primary Antibodies
Applications:	IHC
Recommended Dilution:	IHC: 10-50 Positive control: Human brain Predicted cell location: Cell membrane
Reactivity:	Human
Host:	Rabbit
Isotype:	IgG
Clonality:	Polyclonal
Immunogen:	Synthetic peptide of human TRPM3
Formulation:	pH7.4 PBS, 0.05% NaN <sub>3</sub> , 40% Glycerol
Concentration:	lot specific
Purification:	Antigen affinity purification
Conjugation:	Unconjugated
Storage:	Store at -20°C as received.
Stability:	Stable for 12 months from date of receipt.
Gene Name:	transient receptor potential cation channel subfamily M member 3
Database Link:	<a href="#">NP_996827</a> <a href="#">Entrez Gene 80036 Human</a> <a href="#">Q9HCF6</a>
Background:	The product of this gene belongs to the family of transient receptor potential (TRP) channels. TRP channels are cation-selective channels important for cellular calcium signaling and homeostasis. The protein encoded by this gene mediates calcium entry, and this entry is potentiated by calcium store depletion. Alternatively spliced transcript variants encoding different isoforms have been identified.
Synonyms:	GON-2; LTRPC3; MLSN2
Protein Families:	Druggable Genome, Ion Channels: Transient receptor potential, Transmembrane



[View online »](#)

**Product images:**

Immunohistochemistry of paraffin-embedded Human brain tissue using TA351858 (TRPM3 Antibody) at dilution 1/20 (Original magnification: ×200)



Immunohistochemistry of paraffin-embedded Human brain tissue using TA351858 (TRPM3 Antibody) at dilution 1/20, treated with synthetic peptide. (Original magnification: ×200)