

## Product datasheet for **TA351855**

### NG2 (CSPG4) Rabbit Polyclonal Antibody

#### Product data:

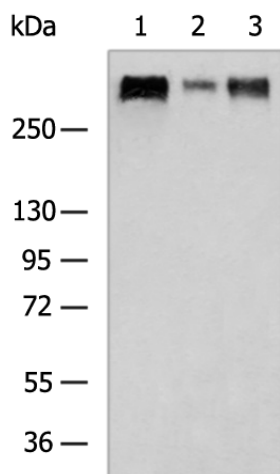
Product Type:	Primary Antibodies
Applications:	IHC, WB
Recommended Dilution:	WB: 500-2000 WB positive control: Mouse kidney tissue, Mouse lung tissue, Mouse brain tissue lysates IHC: 50-100 Positive control: Human tonsil Predicted cell location: Cytoplasm and Cell membrane
Reactivity:	Human, Mouse, Rat
Host:	Rabbit
Isotype:	IgG
Clonality:	Polyclonal
Immunogen:	Synthetic peptide of human CSPG4
Formulation:	pH7.4 PBS, 0.05% NaN <sub>3</sub> , 40% Glycerol
Concentration:	lot specific
Purification:	Antigen affinity purification
Conjugation:	Unconjugated
Storage:	Store at -20°C as received.
Stability:	Stable for 12 months from date of receipt.
Predicted Protein Size:	251 kDa
Gene Name:	chondroitin sulfate proteoglycan 4
Database Link:	<a href="#">NP_001888</a> <a href="#">Entrez Gene 1464 Human</a> <a href="#">Q6UVK1</a>
Background:	A human melanoma-associated chondroitin sulfate proteoglycan plays a role in stabilizing cell-substratum interactions during early events of melanoma cell spreading on endothelial basement membranes. CSPG4 represents an integral membrane chondroitin sulfate proteoglycan expressed by human malignant melanoma cells.
Synonyms:	HMW-MAA; MCSP; MCSPG; MEL-CSPG; MSK16; NG2



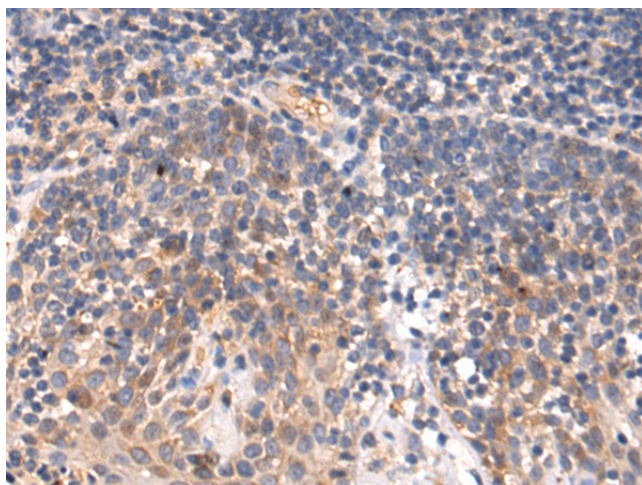
[View online »](#)

Protein Families: Transmembrane

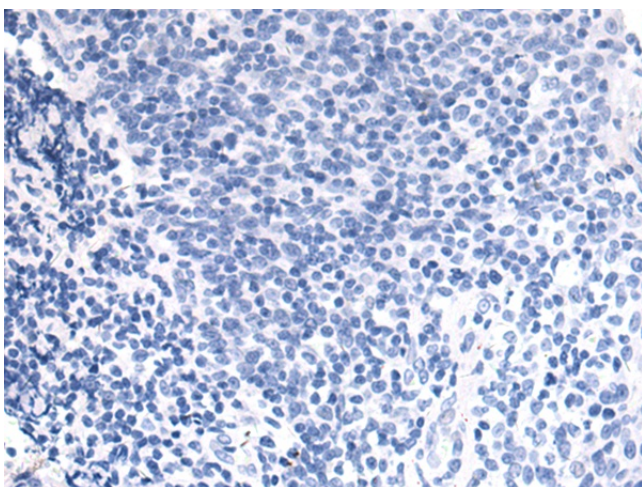
### Product images:



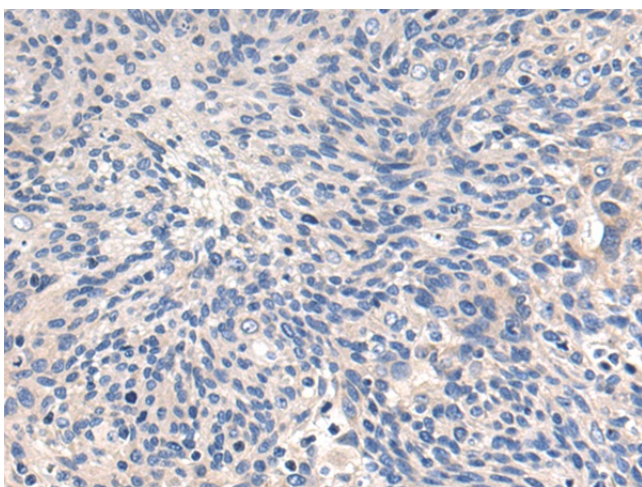
Gel: 6%SDS-PAGE  
Lysate: 40 µg  
Lane 1-3: Mouse kidney tissue  
Mouse lung tissue  
Mouse brain tissue lysates  
Primary antibody: TA351855 (CSPG4 Antibody) at dilution 1/500  
Secondary antibody: Goat anti rabbit IgG at 1/5000 dilution  
Exposure time: 5 minutes



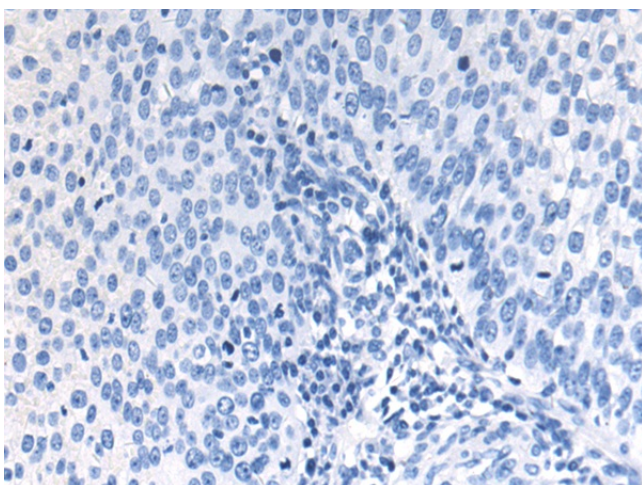
Immunohistochemistry of paraffin-embedded Human tonsil tissue using TA351855 (CSPG4 Antibody) at dilution 1/50 (Original magnification: ×200)



Immunohistochemistry of paraffin-embedded Human tonsil tissue using TA351855 (CSPG4 Antibody) at dilution 1/50, treated with synthetic peptide. (Original magnification: ×200)



Immunohistochemistry of paraffin-embedded Human cervical cancer tissue using TA351855 (CSPG4 Antibody) at dilution 1/50 (Original magnification: ×200)



Immunohistochemistry of paraffin-embedded Human cervical cancer tissue using TA351855 (CSPG4 Antibody) at dilution 1/50, treated with synthetic peptide. (Original magnification: ×200)