

Product datasheet for **TA351853**

TREM2 Rabbit Polyclonal Antibody

Product data:

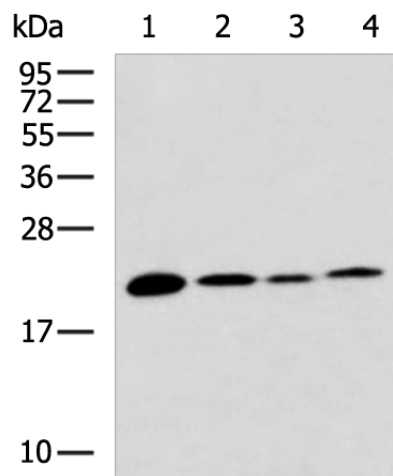
Product Type:	Primary Antibodies
Applications:	WB
Recommended Dilution:	WB: 1000-5000 WB positive control: Mouse heart tissue, Human cerebella tissue, Human cerebrum tissue, Mouse liver tissue lysates
Reactivity:	Human, Mouse
Host:	Rabbit
Isotype:	IgG
Clonality:	Polyclonal
Immunogen:	Synthetic peptide of human TREM2
Formulation:	pH7.4 PBS, 0.05% NaN ₃ , 40% Glycerol
Concentration:	lot specific
Purification:	Antigen affinity purification
Conjugation:	Unconjugated
Storage:	Store at -20°C as received.
Stability:	Stable for 12 months from date of receipt.
Predicted Protein Size:	25 kDa
Gene Name:	triggering receptor expressed on myeloid cells 2
Database Link:	NP_061838 Entrez Gene 83433 Mouse Entrez Gene 54209 Human Q9NZC2
Background:	This gene encodes a membrane protein that forms a receptor signaling complex with the TYRO protein tyrosine kinase binding protein. The encoded protein functions in immune response and may be involved in chronic inflammation by triggering the production of constitutive inflammatory cytokines. Defects in this gene are a cause of polycystic lipomembranous osteodysplasia with sclerosing leukoencephalopathy (PLOSL).
Synonyms:	TREM-2; Trem2a; Trem2b; Trem2c



[View online »](#)

Protein Families: Druggable Genome, Secreted Protein, Transmembrane

Product images:



Gel: 12%SDS-PAGE
Lysate: 40 μ g
Lane 1-4: Mouse heart tissue
Human cerebella tissue
Human cerebrum tissue
Mouse liver tissue lysates
Primary antibody: TA351853 (TREM2 Antibody) at dilution 1/1000
Secondary antibody: Goat anti rabbit IgG at 1/5000 dilution
Exposure time: 5 minutes